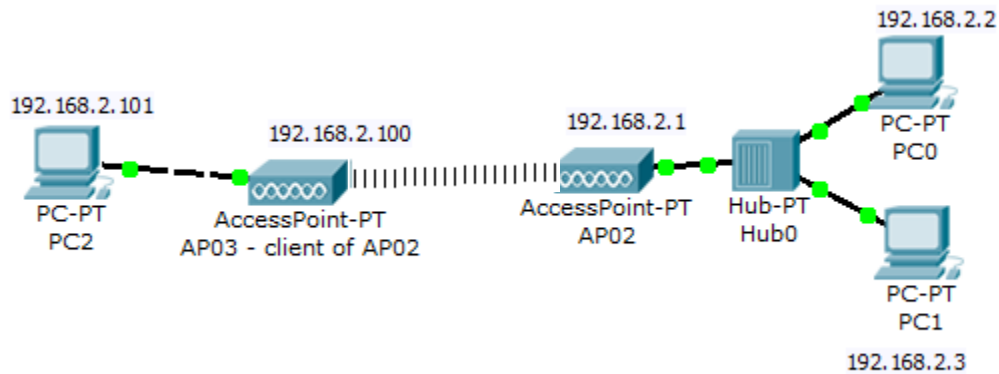


Wireless Lec 06 Wireless Access point Operation Mode

1. Client operation mode

Equipment:

- 3 PCs
- 2 AP
- 1 switch



AP02:

IP: 192.168.2.1
Mask: 255.255.255.0
SSID: AP02
Country: Egypt
Mode: Access Point

PC0:

IP: 192.168.2.2
Mask: 255.255.255.0

PC1:

IP: 192.168.2.3
Mask: 255.255.255.0

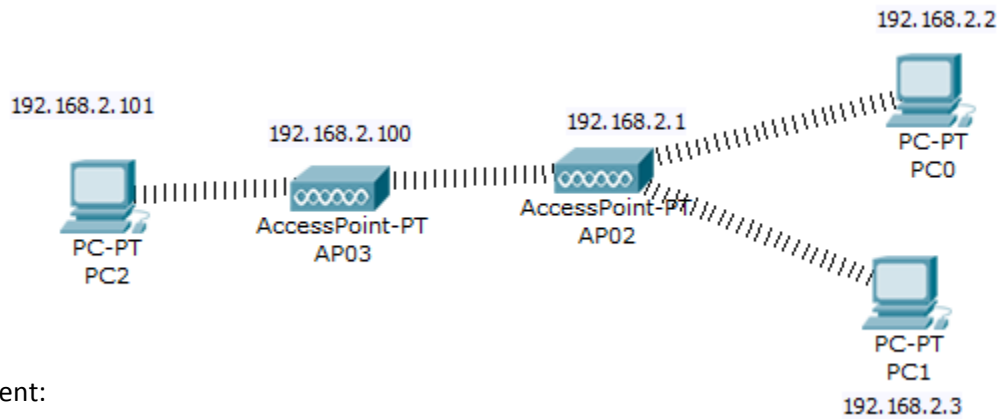
AP03:

IP: 192.168.2.100
Mask: 255.255.255.0
SSID: AP03
Country: Egypt
Mode: Client (of AP02) (or MAC of AP02)

PC3:

IP: 192.168.2.101
Mask: 255.255.255.0

2. Repeater operation mode



Equipment:

3 PCs
2 AP

AP02:

IP: 192.168.2.1
Mask: 255.255.255.0
SSID: AP02
Country: Egypt
Mode: Access Point

PC0:

IP: 192.168.2.2
Mask: 255.255.255.0

PC1:

IP: 192.168.2.3
Mask: 255.255.255.0

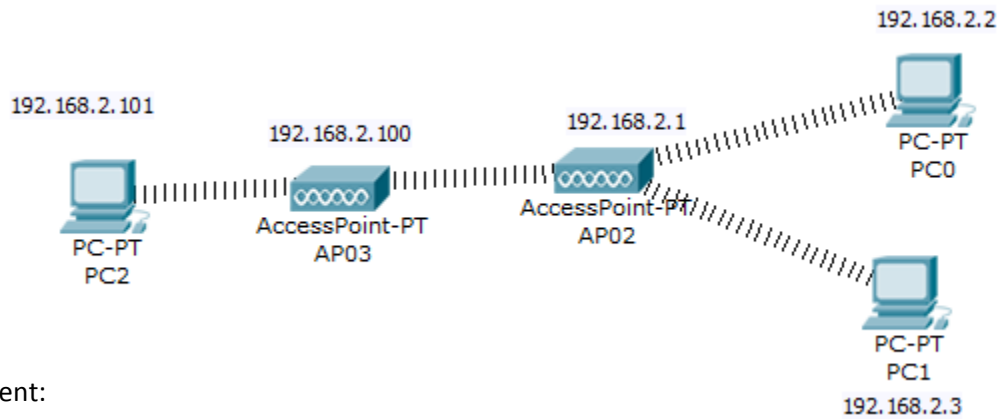
AP03:

IP: 192.168.2.100
Mask: 255.255.255.0
SSID: AP03
Country: Egypt
Mode: Repeater (of MAC of AP02)

PC3:

IP: 192.168.2.101
Mask: 255.255.255.0

3. Universal Repeater operation mode



Equipment:

3 PCs
2 AP

AP02:

IP: 192.168.2.1
Mask: 255.255.255.0
SSID: AP02
Country: Egypt
Mode: Access Point

PC0:

IP: 192.168.2.2
Mask: 255.255.255.0

PC1:

IP: 192.168.2.3
Mask: 255.255.255.0

AP03:

IP: 192.168.2.100
Mask: 255.255.255.0
SSID: AP03
Country: Egypt
Mode: Universal Repeater (of MAC of AP02)

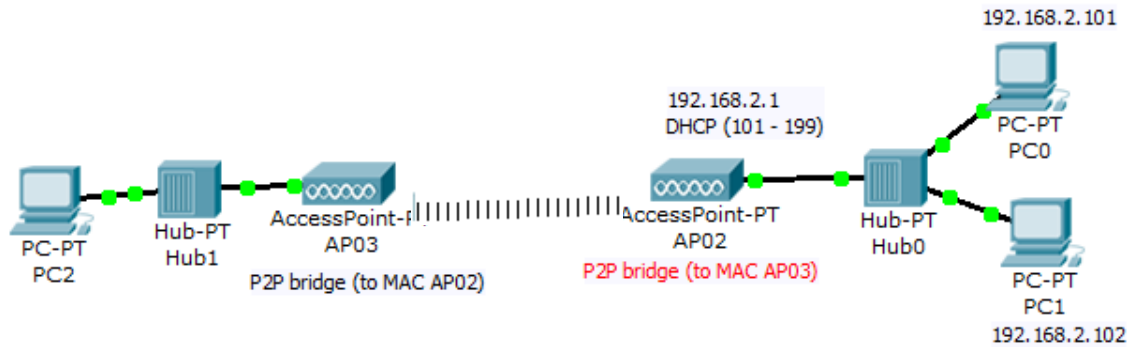
PC3:

IP: 192.168.2.101
Mask: 255.255.255.0

Point 2 Point Bridge

Equipment:

3 PCs
2 hubs
2 APs



AP02:

IP: 192.168.2.1
Mask: 255.255.255.0
SSID: AP02
Country: Egypt
Mode: P2P bridge [to MAC of AP03]
DHCP: on [192.169.2.101 – 192.168.2.199]

PC0:

IP: (automatic) 192.168.2.101
Mask: 255.255.255.0

PC1:

IP: (automatic) 192.168.2.102
Mask: 255.255.255.0

AP03:

IP: (automatic) 192.168.2.103
Mask: -
SSID: AP03
Country: Egypt
Mode: P2P bridge [to MAC of AP02]

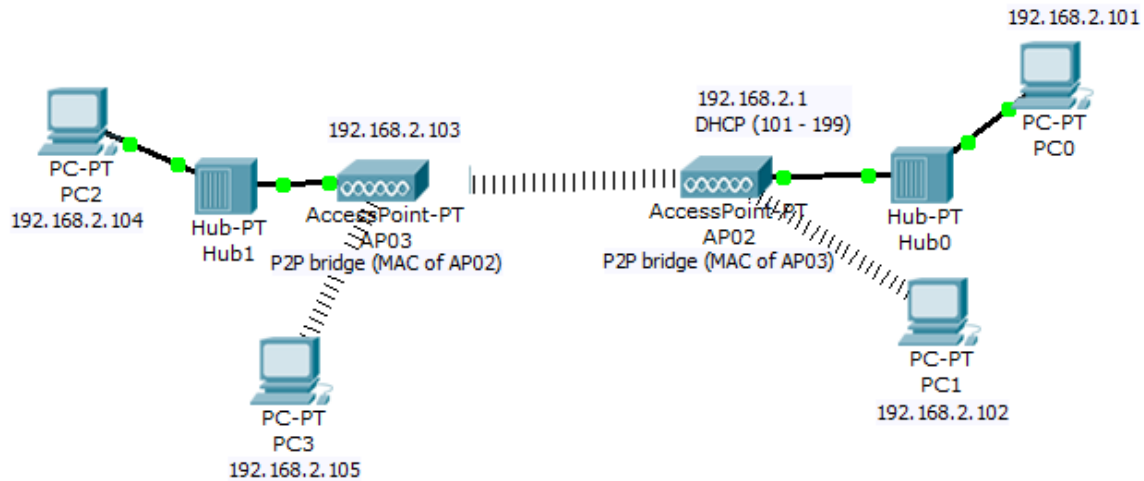
PC3:

IP: (automatic) 192.168.2.104
Mask: 255.255.255.0

5. Point 2 Point Bridge with AP mode

Equipment:

- 4 PCs
- 2 hubs
- 2 AP



AP02:

- IP: 192.168.2.1
- Mask: 255.255.255.0
- SSID: AP02
- Country: Egypt
- Mode: P2P bridge [to MAC of AP03] + AP mode
- DHCP: on [192.169.2.101 – 192.168.2.199]

PC0:

- IP: (automatic) 192.168.2.101
- Mask: 255.255.255.0

PC1:

- IP: (automatic) 192.168.2.102
- Mask: 255.255.255.0

AP03:

- IP: (automatic) 192.168.2.103
- Mask: -
- SSID: AP03
- Country: Egypt
- Mode: P2P bridge [to MAC of AP02] + AP mode

PC3:

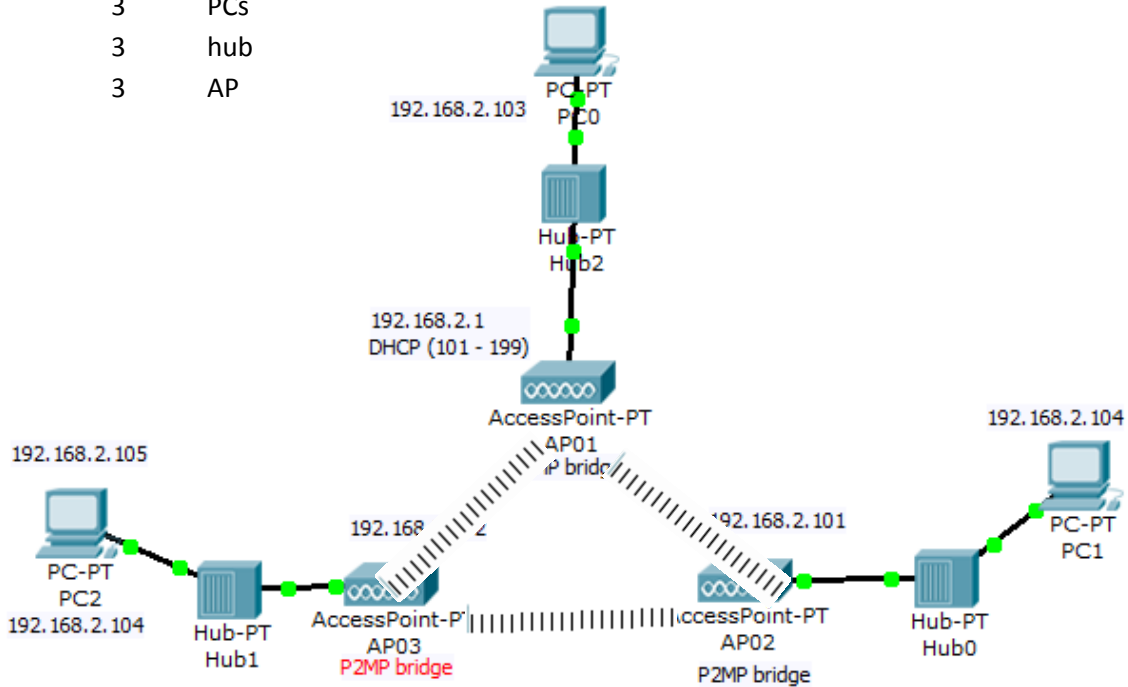
- IP: (automatic) 192.168.2.104

Mask: 255.255.255.0

6. Point 2 Multi Point Bridge

Equipment:

- 3 PCs
- 3 hub
- 3 AP



AP01:

- IP: 192.168.2.1
- Mask: 255.255.255.0
- SSID: AP01
- Country: Egypt
- Mode: P2MP bridge [to MAC of AP02 & AP03]
- DHCP: on [192.169.2.101 – 192.168.2.199]

AP02:

- IP: (DHCP) 192.168.2.101
- Mask: 255.255.255.0
- SSID: AP02
- Country: Egypt
- Mode: P2MP bridge [to MAC of AP01 & AP03]

AP03:

- IP: (DHCP) 192.168.2.102
- Mask: 255.255.255.0
- SSID: AP03
- Country: Egypt
- Mode: P2MP bridge [to MAC of AP02 & AP01]



PC0:

IP: (automatic) 192.168.2.103

Mask: 255.255.255.0

PC1:

IP: (automatic) 192.168.2.104

Mask: 255.255.255.0

PC2:

IP: (automatic) 192.168.2.105

Mask: 255.255.255.0