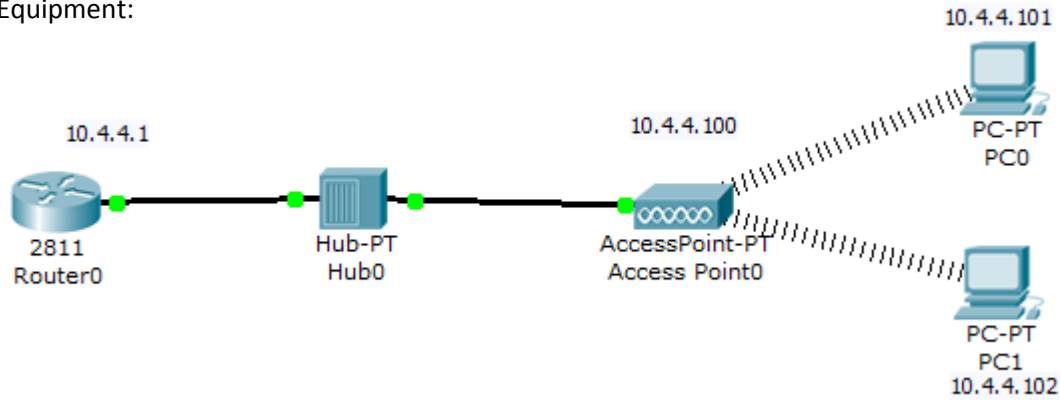


Wireless Lab 05

Extend common distribution system using Access Points, and Routers

1. Using Access point

Equipment:



Wireless AP	AP	
	IP	10.4.4.100
	Subnet mask	255.255.255.0
	GW	10.4.4.1
	SSID	AP02
	Country	Egypt
	Mode	Access Point
	DHCP	on [10.4.4.101 – 10.4.4.110] GW : 10.4.4.1
PC0	PC0	
	IP settings	DHCP
	IP	-
	Subnet mask	-
	Gateway	-
PC1	PC1	
	IP settings	DHCP
	IP	-
	Subnet mask	-
	Gateway	-

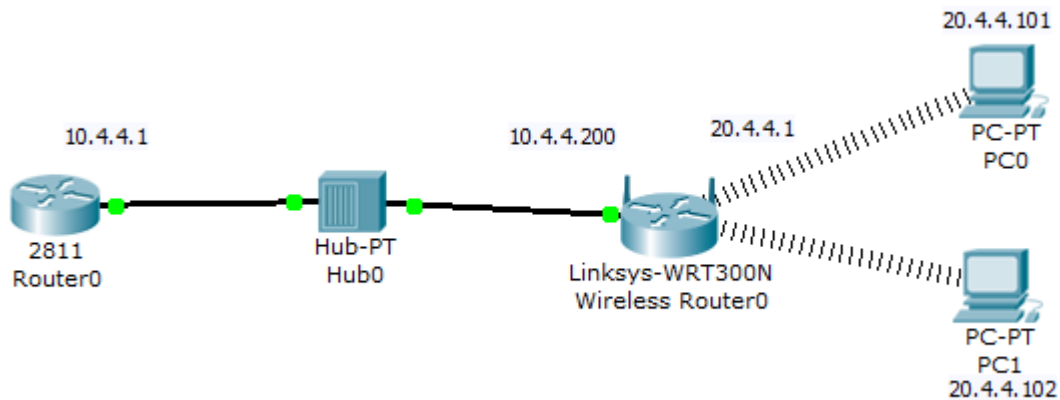
Testing

Access Point	Ping [pc0 ip] Ping [pc1 ip] Ping 10.4.4.1 Ping 8.8.8.8
--------------	---

Pc0	Ipconfig Ping [pc1 ip] Ping 20.4.4.1 Ping 10.4.4.100 Ping 10.4.4.1 Ping 8.8.8.8
-----	--

Pc1	Ipconfig Ping [pc0 ip] Ping 20.4.4.1 Ping 10.4.4.100 Ping 10.4.4.1 Ping 8.8.8.8
-----	--

2. Using wireless Router



Router	
Network IP	20.4.4.1
Subnet mask	255.255.255.0
DHCP	on [20.4.4.101 – 20.4.4.120]
Internet IP	10.4.4.200
Subnet Mask	255.255.255.0
GW	10.4.4.1
SSID	Router01
Country	Egypt

PC0	
IP settings	Dynamic
IP	-
Subnet mask	-
Gateway	-



PC2	
IP settings	Static
IP	Dynamic
Subnet mask	-
Gateway	-

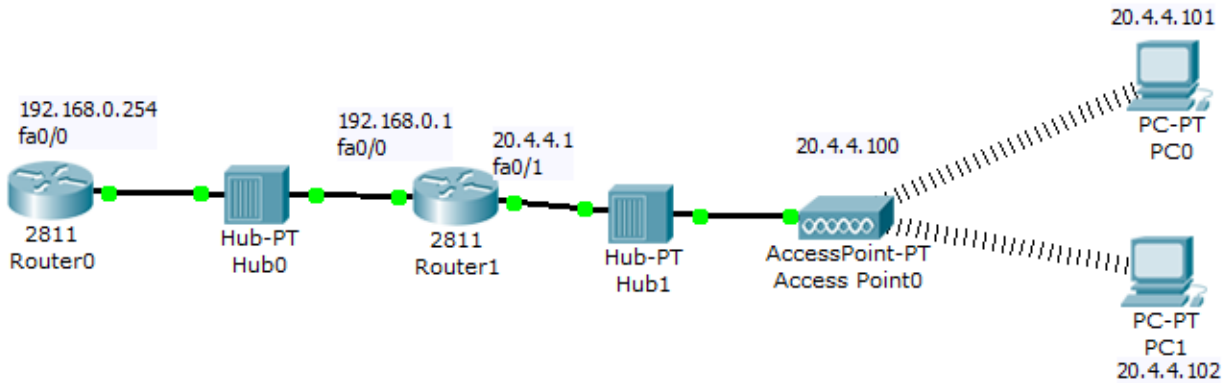
Testing

Wireless Router	Ping [pc0 ip] Ping [pc1 ip] Ping 20.4.4.1 Ping 10.4.4.200 Ping 10.4.4.1 Ping 8.8.8.8
-----------------	---

Pc0	Ipconfig Ping [pc1 ip] Ping 20.4.4.1 Ping 10.4.4.200 Ping 10.4.4.1 Ping 8.8.8.8
-----	--

Pc01	Ipconfig Ping [pc0 ip] Ping 20.4.4.1 Ping 10.4.4.200 Ping 10.4.4.1 Ping 8.8.8.8
------	--

3. Access Point and wired Router



Router 1	Static route Destination: 20.4.4.0 Mask: 255.255.255.0 Next hop: 192.168.0.254
Router 1	<pre> en config t interface fa0/0 ip address 192.168.0.1 255.255.255.0 no sh end config t interface fa0/1 ip address 20.4.4.1 255.255.255.0 no sh end config t ip route 192.168.0.0 255.255.255.0 fa0/0 ip route 20.4.4.0 255.255.255.0 fa0/1 ip route 0.0.0.0 0.0.0.0 192.168.0.254 end </pre>

Wireless AP	AP	
	IP	20.4.4.100
	Subnet mask	255.255.255.0
	GW	10.4.4.1
	SSID	AP02
	Country	Egypt
	Mode	Access Point
	DHCP	on [20.4.4.101 – 20.4.4.110] GW : 10.4.4.1
PC0	PC0	
	IP settings	DHCP
	IP	-
	Subnet mask	-
	Gateway	-
PC1	PC1	
	IP settings	DHCP
	IP	-
	Subnet mask	-
	Gateway	-

Testing

Router2	Ping 20.4.4.1 Ping 20.4.4.100 Ping [pc0 ip] Ping [pc1 ip] Ping 192.168.0.254 Ping 192.168.0.1 Ping 8.8.8.8
---------	--

Access Point	Ping 20.4.4.1 Ping 20.4.4.100 Ping [pc0 ip] Ping [pc1 ip] Ping 192.168.0.254 Ping 192.168.0.1 Ping 8.8.8.8
--------------	--



Pc0	Ipconfig Ping 20.4.4.1 Ping 20.4.4.100 Ping [pc1 ip] Ping 192.168.0.254 Ping 192.168.0.1 Ping 8.8.8.8
-----	---

Pc1	Ipconfig Ping 20.4.4.1 Ping 20.4.4.100 Ping [pc0 ip] Ping 192.168.0.254 Ping 192.168.0.1 Ping 8.8.8.8
-----	---