



Lecture (06)

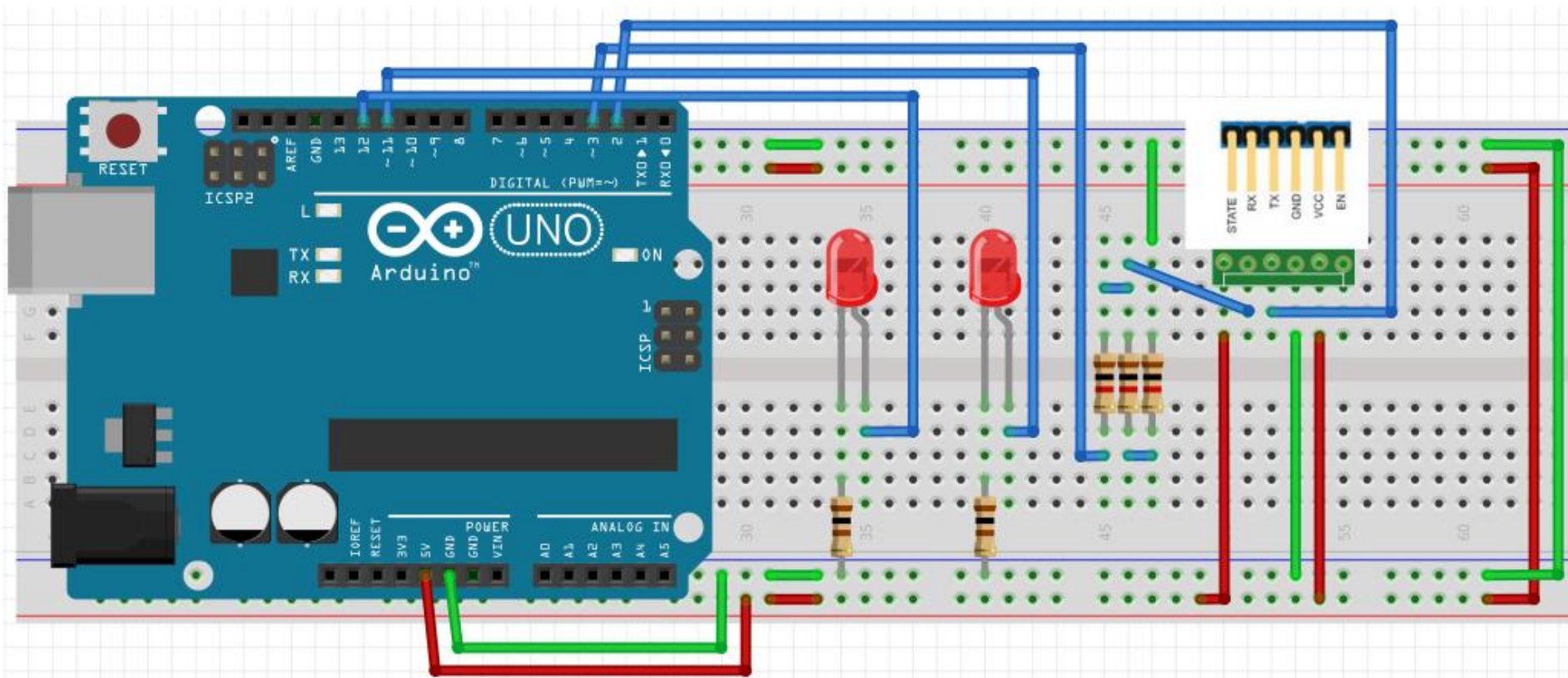
Arduino Microcontroller Programming and interfacing (3)



By:

Dr. Ahmed ElShafee

HC50 interfacing



```

#include <SoftwareSerial.h> //Software Serial
Port
#define RxD 2
#define TxD 3

#define led01 11
#define led02 12
SoftwareSerial blueToothSerial(RxD,TxD);
int led01_status=0;
int led02_status=0;
void setup()
{
  Serial.begin(9600);
  pinMode(RxD, INPUT);
  pinMode(TxD, OUTPUT);
  blueToothSerial.begin(9600);
  pinMode(led01, OUTPUT);
  pinMode(led02, OUTPUT);
  digitalWrite(led01,LOW);
  digitalWrite(led02,LOW);

  blueToothSerial.flush();
  //blueToothSerial.begin(9600);
}

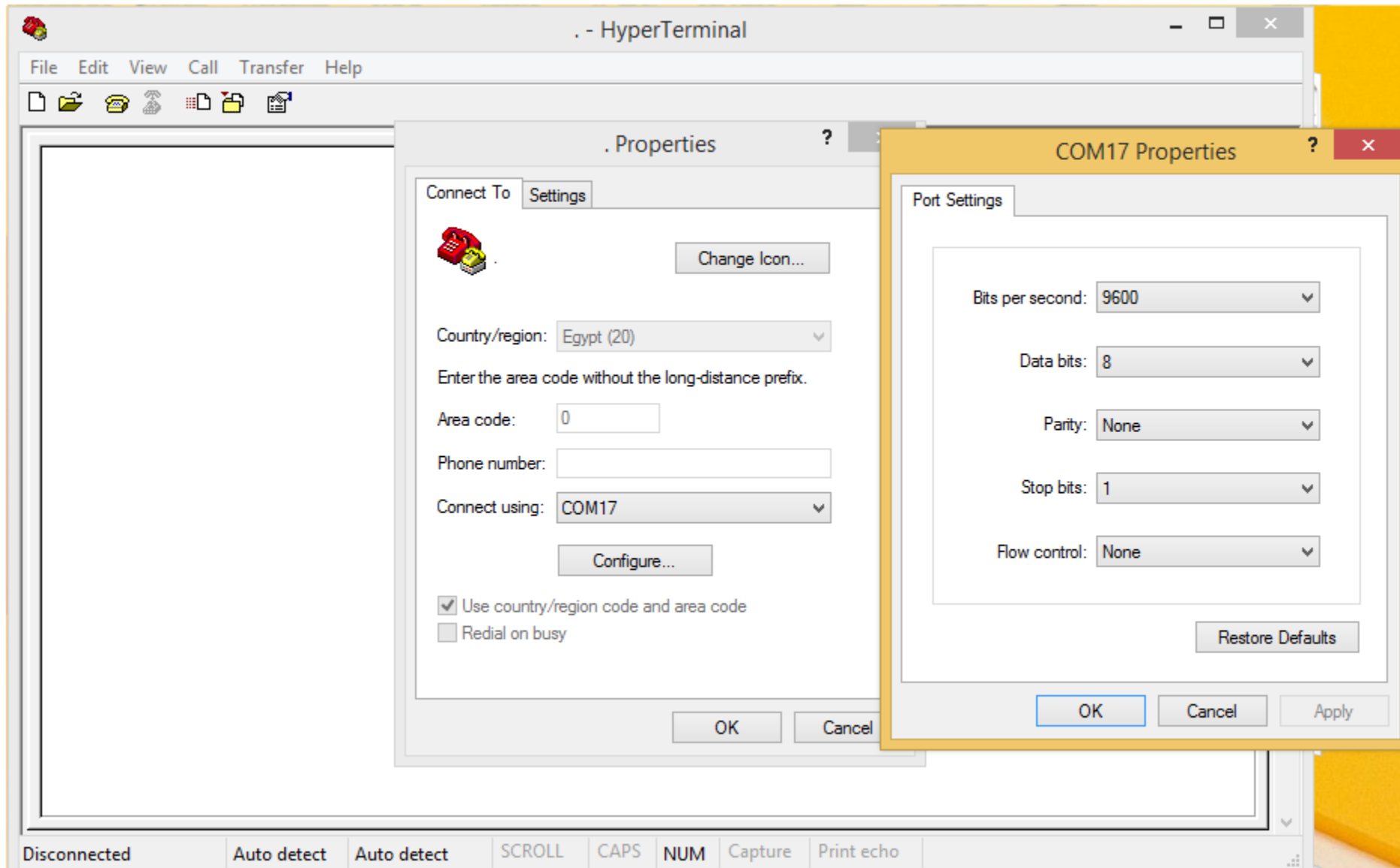
```

```

void loop()
{
  char data = 0;
  if(blueToothSerial.available() > 0)
  {
    data = blueToothSerial.read();
    Serial.print("Recived : ");
    Serial.print(data);
    Serial.print("\n\r");
    if(data == '1')
    {
      led01_status=!led01_status;
      digitalWrite(led01,led01_status);
    }
    else if(data == '2')
    {
      led02_status=!led02_status;
      digitalWrite(led02,led02_status);
    }
  }
}

```

PC controlled



ACU FOE EE 1st Level Spring 2017



Connect to,.....



-16776961

Led 01

Led 02

Mobile app

-



Thanks,..
See you next week (ISA),...