

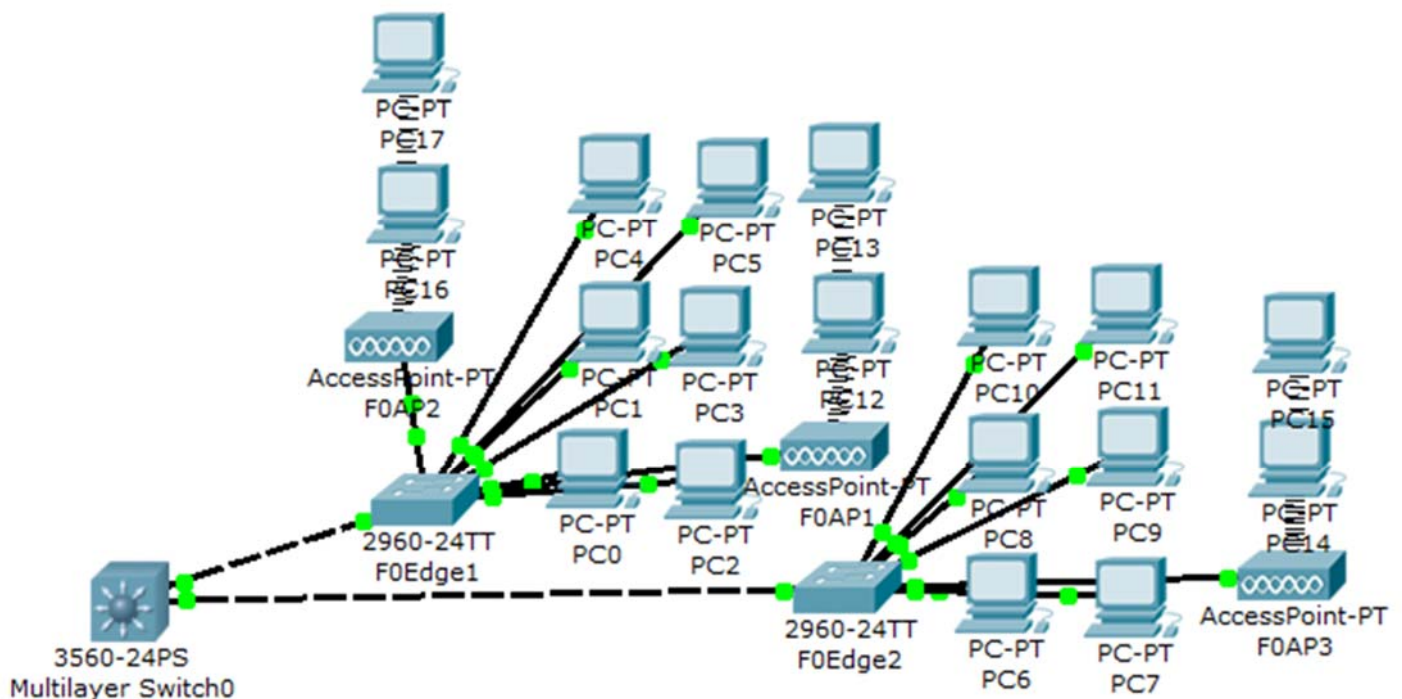


Lecture (09) L3 switch II

By:
Dr. Ahmed ElShafee

Dr. Ahmed ElShafee, ACU : Spring 2016, Practical App.
Networks I

Multilayer Switch and DHCP service



```
enable
config t
hostname Core
ip routing
```

```
line vty 0 4
password cisco
login
```

```
line console 0
password cisco
login
```

```
enable password cisco
```

```
enable secret cisco1
```

```
interface vlan 1
ip address 10.0.10.1 255.255.255.0
no shutdown
```

```
vlan 2
name vlan2
```

Core

```
interface vlan 2
ip address 10.0.20.1 255.255.255.0
no shutdown
```

```
vlan 3
name vlan3
```

```
interface vlan 3
ip address 10.0.30.1 255.255.255.0
no shutdown
```

```
vlan 4
name vlan4
```

```
interface vlan 4
ip address 10.0.40.1 255.255.255.0
no shutdown
```

```
vlan 5
name wlan
```

```
interface vlan 5
ip address 10.0.50.1 255.255.255.0
no shutdown
```

```
vtp domain ACU
vtp mode server
```

```
interface range fa0/1-24
speed auto
duplex auto
```

```
interface range fa0/5-24
switchport trunk encapsulation dot1q
switchport mode trunk
```

```
interface fa0/1
switchport mode access
switchport access vlan 1
```

```
interface fa0/2
switchport mode access
switchport access vlan 2
```

```
interface fa0/3
switchport mode access
switchport access vlan 3
```

```
interface fa0/4
switchport mode access
switchport access vlan 4
```

```
interface fa0/5
switchport mode access
switchport access vlan 5
```

```
spanning-tree vlan 1,2,3,4,5 root primary
```

```
ip dhcp excluded-address 10.0.20.1
10.0.20.100
ip dhcp pool vlan2pool
network 10.0.20.0 255.255.255.0
default-router 10.0.20.1
```

```
ip dhcp excluded-address 10.0.30.1
10.0.30.100
ip dhcp pool vlan3pool
network 10.0.30.0 255.255.255.0
default-router 10.0.30.1
```

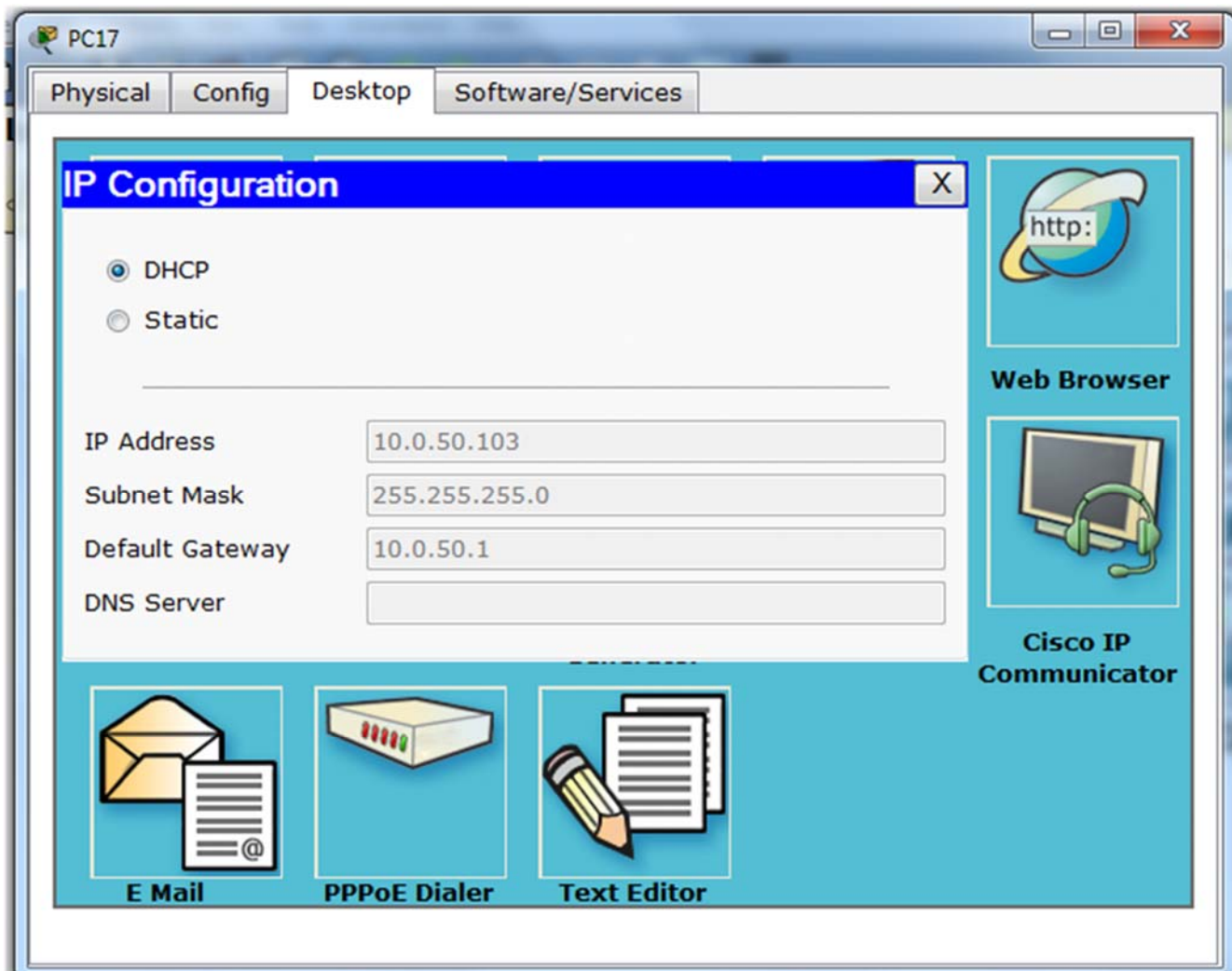
```
ip dhcp excluded-address 10.0.40.1
10.0.40.100
ip dhcp pool vlan4pool
network 10.0.40.0 255.255.255.0
default-router 10.0.40.1
```

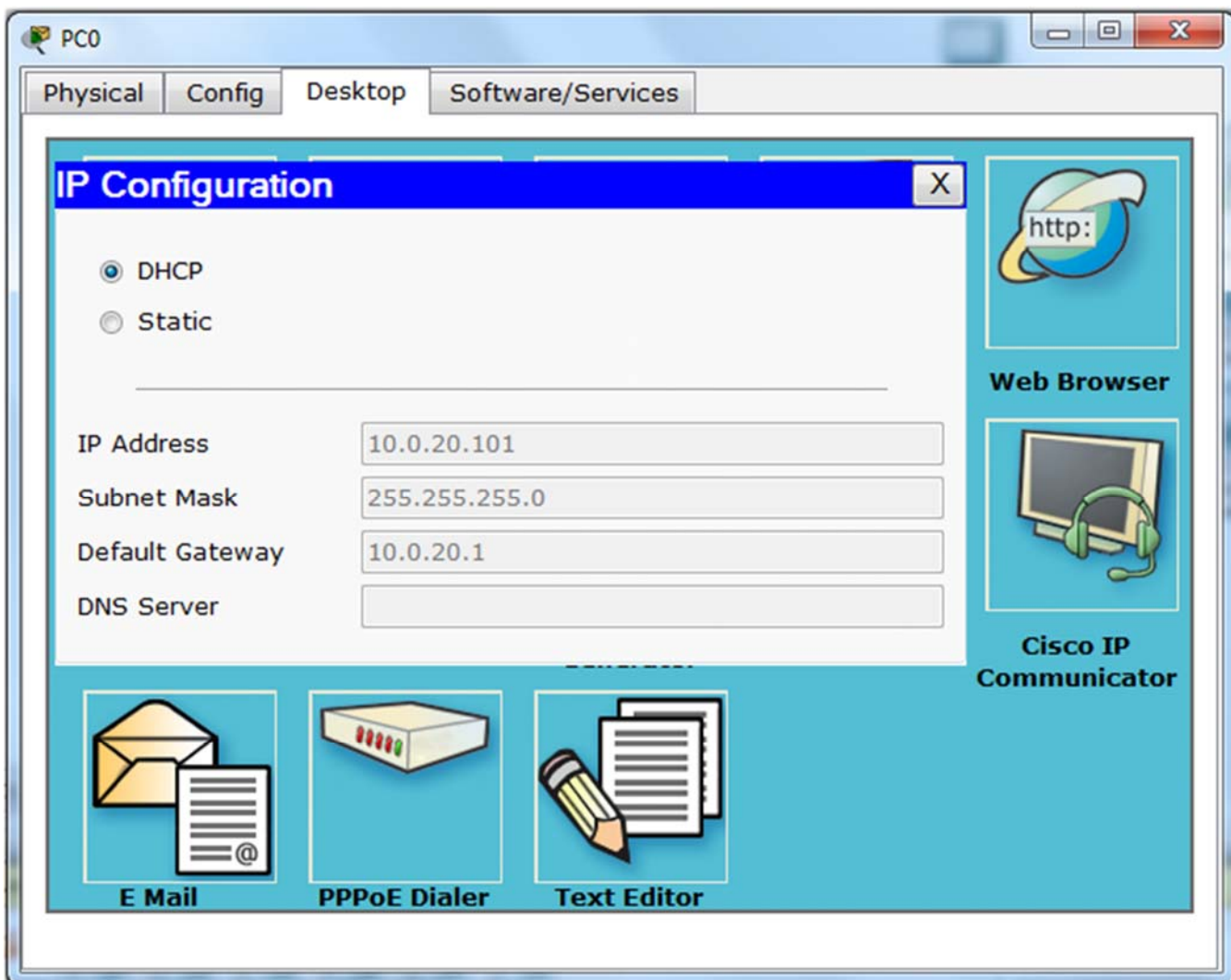
```
ip dhcp excluded-address 10.0.50.1
10.0.50.100
ip dhcp pool vlan5pool
network 10.0.50.0 255.255.255.0
default-router 10.0.50.1
```

```
end
copy running-config startup-config
```

o

Dr. Ahmed ElShafee, ACU : Fall 2015, Practical App Network II





Thanks,..
See you next week (ISA),...