

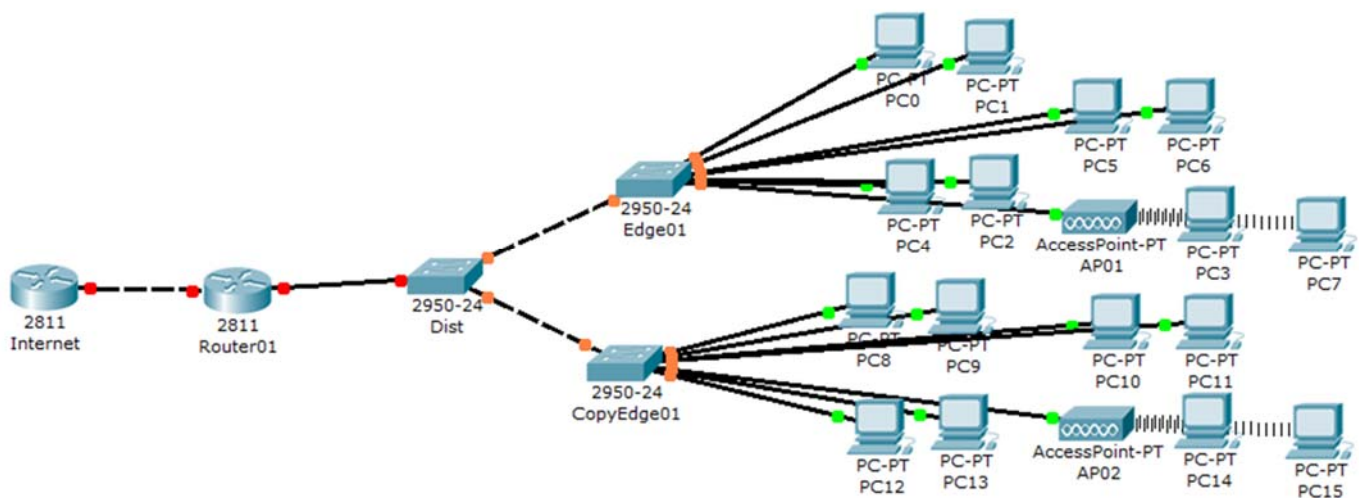


# Practical Training 02

By:

**Dr. Ahmed ElShafee**

Dr. Ahmed ElShafee, ACU : Fall 2016, Practical App.  
Networks II



```
Internet Router
enable
Config t
hostname InternetRouter
```

```
Interface fa0/1
IP address 192.168.1.1 255.255.255.0
No sh
```

```
interface loopback 0
no sh
ip address 8.8.8.8 255.255.255.255
```

```
interface loopback 1
no sh
ip address 4.2.2.2 255.255.255.255
IP route 10.0.10.0 255.255.255.0 fa0/1
IP route 10.0.20.0 255.255.255.0 fa0/1
IP route 10.0.30.0 255.255.255.0 fa0/1
IP route 10.0.40.0 255.255.255.0 fa0/1
IP route 10.0.50.0 255.255.255.0 fa0/1
IP route 192.168.1.0 255.255.255.0 fa0/1
IP route 0.0.0.0 0.0.0.0 fa0/1
```

Dr. Ahmed ElShafee, ACU : Fall 2016, Practical App. Networks II

```
Router 01
```

```
enable
Config t
hostname Router01
```

```
Interface fa0/0
IP address 10.0.10.2 255.255.255.0
No sh
```

```
Interface fa0/1
IP address 192.168.1.2 255.255.255.0
No sh
```

```
IP route 10.0.10.0 255.255.255.0 fa0/0
IP route 10.0.20.0 255.255.255.0 fa0/0
IP route 10.0.30.0 255.255.255.0 fa0/0
IP route 10.0.40.0 255.255.255.0 fa0/0
IP route 10.0.50.0 255.255.255.0 fa0/0
IP route 0.0.0.0 0.0.0.0 fa0/1
```

Dist switch:

-----

```
enabl
config t
hostname dist
interface vlan 1
ip address 10.0.10.100 255.255.255.0
no shutdown
vlan 2
name vlan2

vlan 3
name vlan3

vlan 4
name vlan4
vlan 5
name wlan
interface range fa0/1-24
switchport mode trunk
spanning-tree vlan 1,2,3,4,5 root primary
end
```

actical App. Networks II

Edge 01:

\*\*\*\*\*

```
enabl
config t
hostname Edge01
interface vlan 1
ip address 10.0.10.3 255.255.255.0
no shutdown

vlan 2
name vlan2

vlan 3
name vlan3

vlan 4
name vlan4

vlan 5
name wlan
```

```
interface range fa0/24
switchport mode trunk
```

```
interface range fa0/1-7
switchport mode access
switchport access vlan 2
```

```
interface range fa0/8-14
switchport mode access
switchport access vlan 3
```

```
interface range fa0/15-21
switchport mode access
switchport access vlan 4
```

```
interface range fa0/22-23
switchport mode access
switchport access vlan 5
```

```
ip default-gateway 10.0.10.1
```

```
end
```

016, Practical App. Networks II

```
enabl  
config t  
hostname Edge02  
interface vlan 1  
ip address 10.0.10.4 255.255.255.0  
no shutdown
```

```
vlan 2  
name vlan2
```

```
vlan 3  
name vlan3
```

```
vlan 4  
name vlan4
```

```
vlan 5  
name wlan
```

```
interface range fa0/24  
switchport mode trunk  
interface range fa0/1-7  
switchport mode access  
switchport access vlan 2
```

```
interface range fa0/8-14  
switchport mode access  
switchport access vlan 3
```


```
interface range fa0/15-21  
switchport mode access  
switchport access vlan 4
```

```
interface range fa0/22-23  
switchport mode access  
switchport access vlan 5
```

```
ip default-gateway 10.0.10.1
```

```
end
```

016, Practical App. Networks II



**Thanks,..**  
**See you next week (ISA),...**