

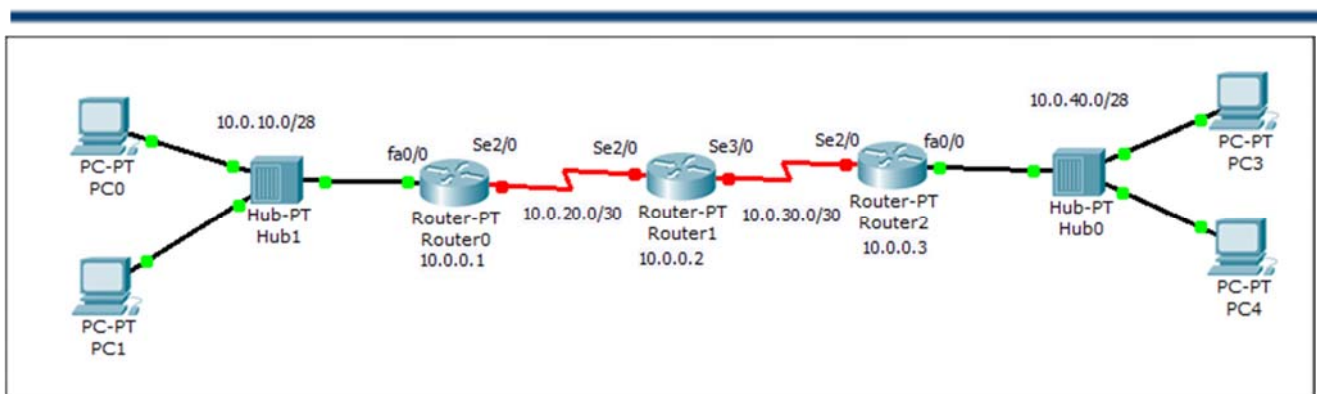


Practical Training 01

By:

Dr. Ahmed ElShafee

Dr. Ahmed ElShafee, ACU : Fall 2016, Practical App.
Networks II



Router 01

```
enable
Config t
enable password cisco

line vty 0 4
password cisco
login

interface loopback 0
no sh
ip address 10.0.0.1 255.255.255.255

Interface fa0/0
IP address 10.0.10.1 255.255.255.240
No sh
Interface se2/0
IP address 10.0.20.1 255.255.255.252
No sh
clock rate 2000000
IP route 10.0.10.0 255.255.255.240 fa0/0
IP route 0.0.0.0 0.0.0.0 se2/0
Exit
```

Practical App. Networks II

Router 02

```
enable
Config t
enable password cisco

line vty 0 4
password cisco
login

interface loopback 0
no sh
ip address 10.0.0.2 255.255.255.255

Interface se2/0
IP address 10.0.20.2 255.255.255.252
No sh

Interface se3/0
IP address 10.0.30.2 255.255.255.252
No sh
```

```
IP route 10.0.10.0 255.255.255.240 se2/0
IP route 10.0.20.0 255.255.255.252 se2/0
IP route 10.0.30.0 255.255.255.252 se3/0
IP route 10.0.40.0 255.255.255.240 se3/0
IP route 10.0.0.1 255.255.255.255 se2/0
IP route 10.0.0.3 255.255.255.255 se3/0

Exit
```

Router 03


```
enable
Config t
enable password cisco

line vty 0 4
password cisco
login

interface loopback 0
no sh
ip address 10.0.0.3 255.255.255.255

Interface se2/0
IP address 10.0.30.1 255.255.255.252
No sh
clock rate 2000000
Interface fa0/0
IP address 10.0.40.1 255.255.255.240
No sh
IP route 10.0.40.0 255.255.255.240 fa0/0
IP route 0.0.0.0 0.0.0.0 se2/0
Exit
```

tical App. Networks II



Thanks,..
See you next week (ISA),...