

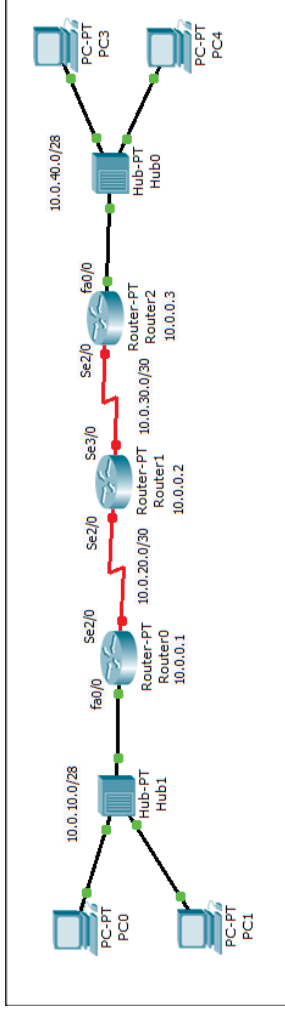


Lecture (07) Routers II

By:
Dr. Ahmed ElShafee

Dr. Ahmed ElShafee, ACU : Semester Year, Practical App Network II

Topology 01 (3 routers static route)



Y

Dr. Ahmed ElShafee, ACU : Semester Year, Practical App Network II

```

Router 01
enable
Config t
enable password cisco

line vty 0 4
password cisco
login

interface loopback 0
no sh
ip address 10.0.0.1 255.255.255.255

Interface fa0/0
IP address 10.0.10.1 255.255.255.240
No sh

Interface se2/0
IP address 10.0.20.1 255.255.255.252
No sh
clock rate 2000000

IP route 10.0.10.0 255.255.255.240 fa0/0

```

Exit

```

Router 02
enable
Config t
enable password cisco

line vty 0 4
password cisco
login

interface loopback 0
no sh
ip address 10.0.0.2 255.255.255.255

Interface se2/0
IP address 10.0.20.2 255.255.255.252
No sh

Interface se3/0
IP address 10.0.30.2 255.255.255.252
No sh

IP route 10.0.10.0 255.255.255.240 se2/0
IP route 10.0.20.0 255.255.255.252 se2/0
IP route 10.0.30.0 255.255.255.252 se3/0

```

```

IP route 10.0.40.0 255.255.255.240 se3/0
IP route 10.0.0.1 255.255.255.255 se2/0
IP route 10.0.0.3 255.255.255.255 se3/0

```

Exit

IP route 10.0.10.0 255.255.255.240 fa0/0

```

Router 03
enable
Config t
enable password cisco

line vty 0 4
password cisco
login

interface loopback 0
no sh
ip address 10.0.0.3 255.255.255.255

Interface se2/0
IP address 10.0.30.1 255.255.255.252
No sh
clock rate 2000000

Interface fa0/0
IP address 10.0.40.1 255.255.255.240
No sh

IP route 10.0.10.0 255.255.255.240 se2/0
IP route 10.0.20.0 255.255.255.252 se2/0

```

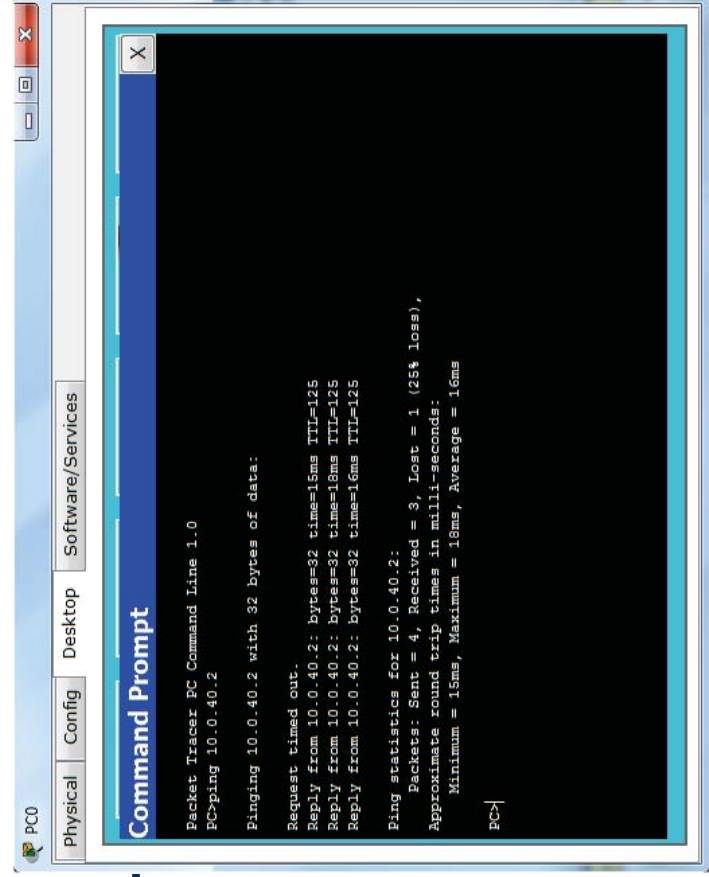
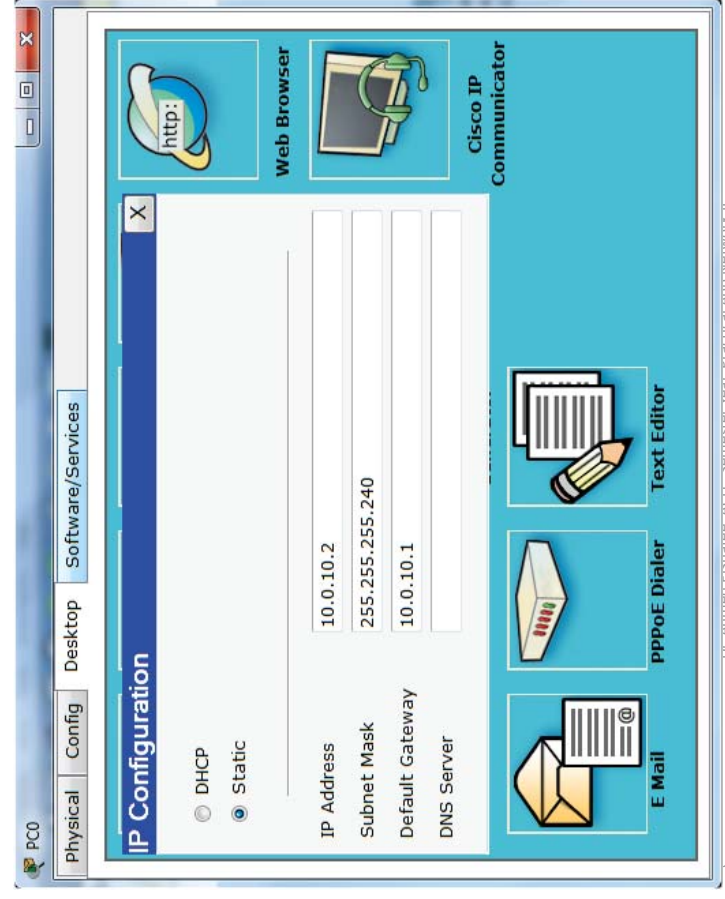
```

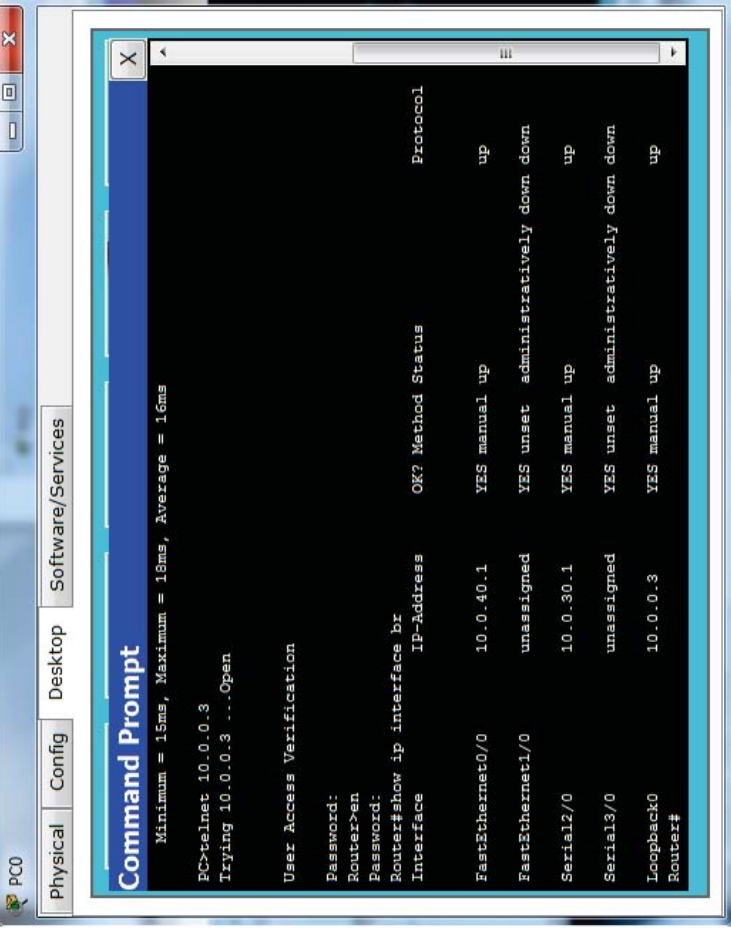
IP route 10.0.30.0 255.255.255.252 se2/0
IP route 10.0.40.0 255.255.255.240 fa0/0
IP route 10.0.0.2 255.255.255.255 se2/0
IP route 10.0.0.3 255.255.255.255 se2/0

```

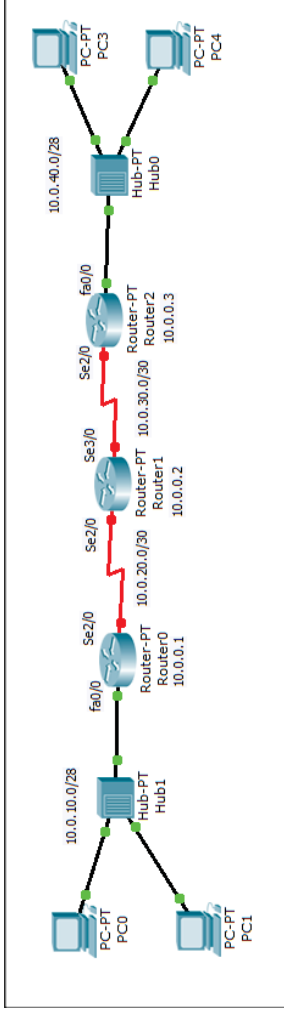
```
exit
```

er Year, Practical App Network II





Topology 02 (3 routers static route with default route)



Dr. Ahmed ElShafee, ACU - Semester Year, Practical App Network II

Router 01

```
enable
Config t
enable password cisco
```

```
line vty 0 4
password cisco
login
interface loopback 0
no sh
ip address 10.0.0.1 255.255.255.255
```

```
Interface fa0/0
IP address 10.0.10.1 255.255.255.240
No sh
```

```
Interface se2/0
IP address 10.0.20.1 255.255.255.252
No sh
clock rate 2000000
```

```
IP route 10.0.10.0 255.255.255.240 fa0/0
IP route 0.0.0.0 0.0.0.0 se2/0
```

Exit

Year, Practical App Network II

Router 02

```
enable
Config t
enable password cisco
```

```
line vty 0 4
password cisco
login
interface loopback 0
no sh
ip address 10.0.0.2 255.255.255.255
```

```
Interface se2/0
IP address 10.0.20.2 255.255.255.252
No sh
```

```
Interface se3/0
IP address 10.0.30.2 255.255.255.252
No sh
```

```
IP route 10.0.10.0 255.255.255.240 se2/0
IP route 10.0.20.0 255.255.255.252 se2/0
IP route 10.0.30.0 255.255.255.252 se3/0
```

Exit

```
IP route 10.0.40.0 255.255.255.240 se3/0
IP route 10.0.0.1 255.255.255.255 se2/0
IP route 10.0.0.3 255.255.255.255 se3/0
```

Year, Practical App Network II

Router 03

exit

```
enable
Config t
enable password cisco

line vty 0 4
password cisco
login

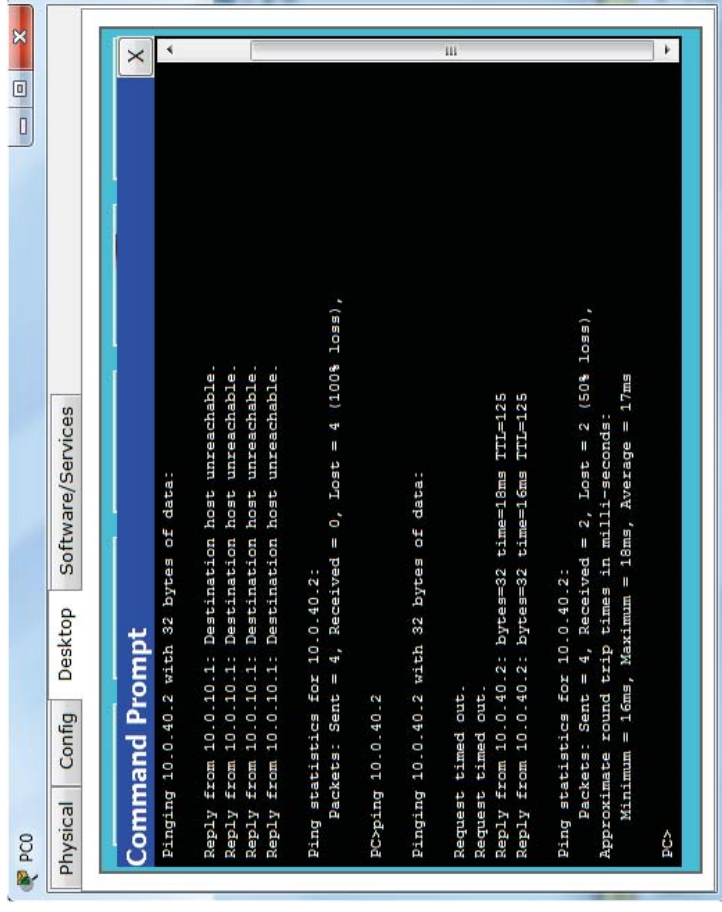
interface loopback 0
no sh
ip address 10.0.0.3 255.255.255.255

Interface se2/0
IP address 10.0.30.1 255.255.255.252
No sh
clock rate 2000000

Interface fa0/0
IP address 10.0.40.1 255.255.255.240
No sh

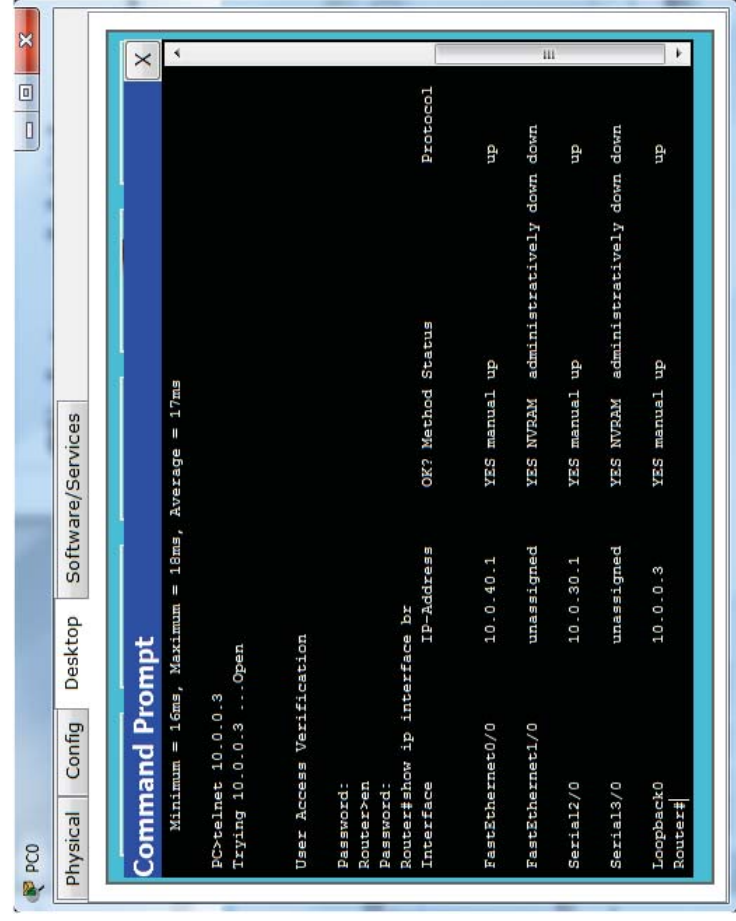
IP route 10.0.40.0 255.255.255.240 fa0/0
IP route 0.0.0.0 0.0.0.0 se2/0
```

1st Year, Practical App Network II



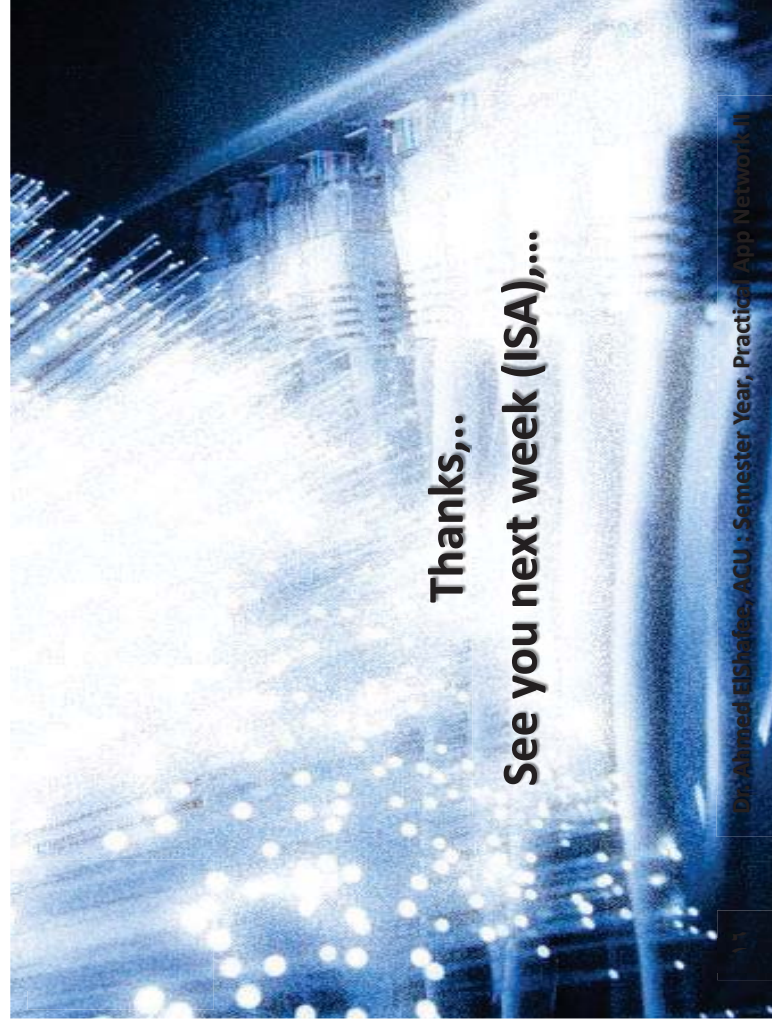
```
PCO
Physical Config Desktop Software/Services
Command Prompt
Pinging 10.0.40.2 with 32 bytes of data:
Reply from 10.0.10.1: Destination host unreachable.
Reply from 10.0.10.1: Destination host unreachable.
Reply from 10.0.10.1: Destination host unreachable.
Reply from 10.0.10.1: Destination host unreachable.
Ping statistics for 10.0.40.2:
    Packets: Sent = 4, Received = 0, Lost = 4 (100% loss),
    PC>ping 10.0.40.2

Pinging 10.0.40.2 with 32 bytes of data:
Request timed out.
Request timed out.
Reply from 10.0.40.2: bytes=32 time=18ms TTL=125
Reply from 10.0.40.2: bytes=32 time=16ms TTL=125
Ping statistics for 10.0.40.2:
    Packets: Sent = 4, Received = 2, Lost = 2 (50% loss),
    Approximate round trip times in milli-seconds:
        Minimum = 16ms, Maximum = 18ms, Average = 17ms
PC>
```



```
PCO
Physical Config Desktop Software/Services
Command Prompt
Minimum = 16ms, Maximum = 18ms, Average = 17ms
PC>telnet 10.0.0.3
Trying 10.0.0.3 ...Open

User Access Verification
Password:
Router>en
Password:
Router#show ip interface br
Interface IP-Address OK? Method Status Protocol
FastEthernet0/0 10.0.40.1 YES manual up
FastEthernet1/0 unassigned YES NVRAM administratively down down
Serial2/0 10.0.30.1 YES manual up
Serial3/0 unassigned YES NVRAM administratively down down
Loopback0 10.0.0.3 YES manual up
Router#
```



Thanks,..
See you next week (ISA),...