



Lecture (07)

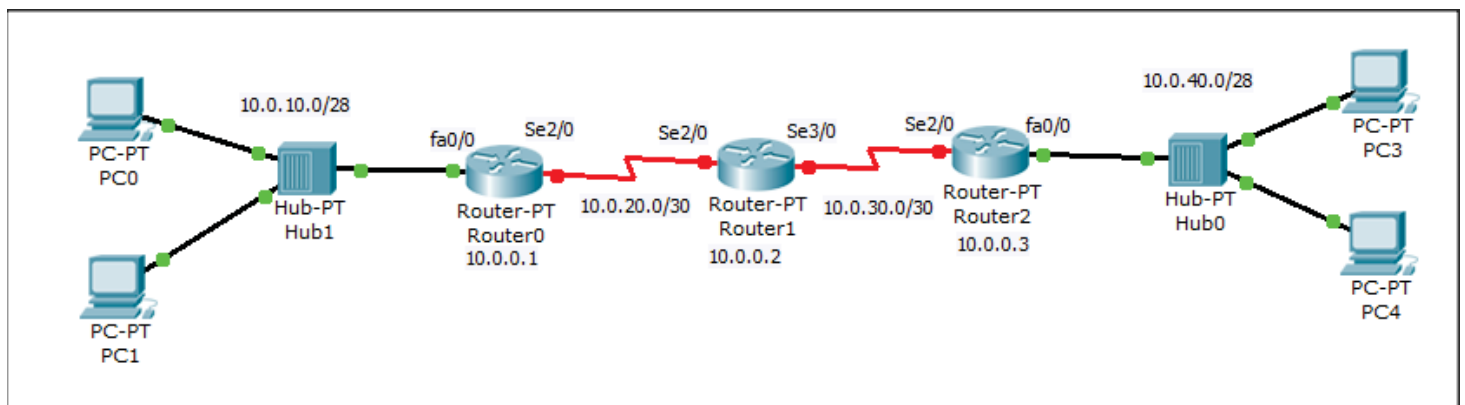
Routers II

By:

Dr. Ahmed ElShafee

Dr. Ahmed ElShafee, ACU : Semester Year, Practical App Network II

Topology 01 (3 routers static route)



Router 01

```
enable
Config t
enable password cisco

line vty 0 4
password cisco
login

interface loopback 0
no sh
ip address 10.0.0.1 255.255.255.255

Interface fa0/0
IP address 10.0.10.1 255.255.255.240
No sh

Interface se2/0
IP address 10.0.20.1 255.255.255.252
No sh
clock rate 2000000

IP route 10.0.10.0 255.255.255.240 fa0/0
```

```
IP route 10.0.20.0 255.255.255.252 se2/0
IP route 10.0.30.0 255.255.255.252 se2/0
IP route 10.0.40.0 255.255.255.240 se2/0
IP route 10.0.0.2 255.255.255.255 se2/0
IP route 10.0.0.3 255.255.255.255 se2/0
```

Exit

Year, Practical App Network II

Router 02

```
enable
Config t
enable password cisco

line vty 0 4
password cisco
login

interface loopback 0
no sh
ip address 10.0.0.2 255.255.255.255

Interface se2/0
IP address 10.0.20.2 255.255.255.252
No sh

Interface se3/0
IP address 10.0.30.2 255.255.255.252
No sh

IP route 10.0.10.0 255.255.255.240 se2/0
IP route 10.0.20.0 255.255.255.252 se2/0
IP route 10.0.30.0 255.255.255.252 se3/0
```

```
IP route 10.0.40.0 255.255.255.240 se3/0
IP route 10.0.0.1 255.255.255.255 se2/0
IP route 10.0.0.3 255.255.255.255 se3/0
```

Exit

Year, Practical App Network II

Router 03

```
enable  
Config t  
enable password cisco
```

```
line vty 0 4  
password cisco  
login
```

```
interface loopback 0  
no sh  
ip address 10.0.0.3 255.255.255.255
```

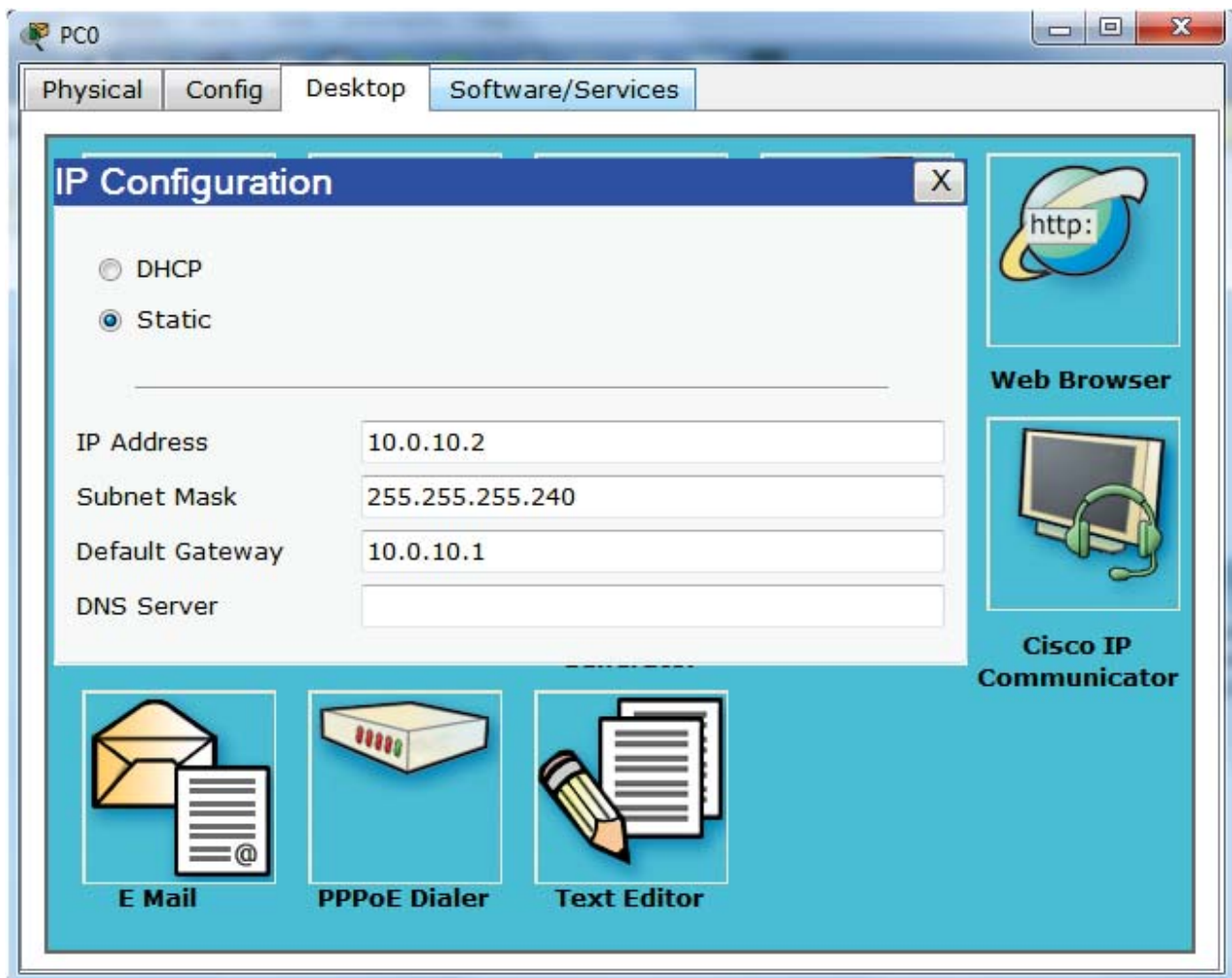
```
Interface se2/0  
IP address 10.0.30.1 255.255.255.252  
No sh  
clock rate 2000000
```

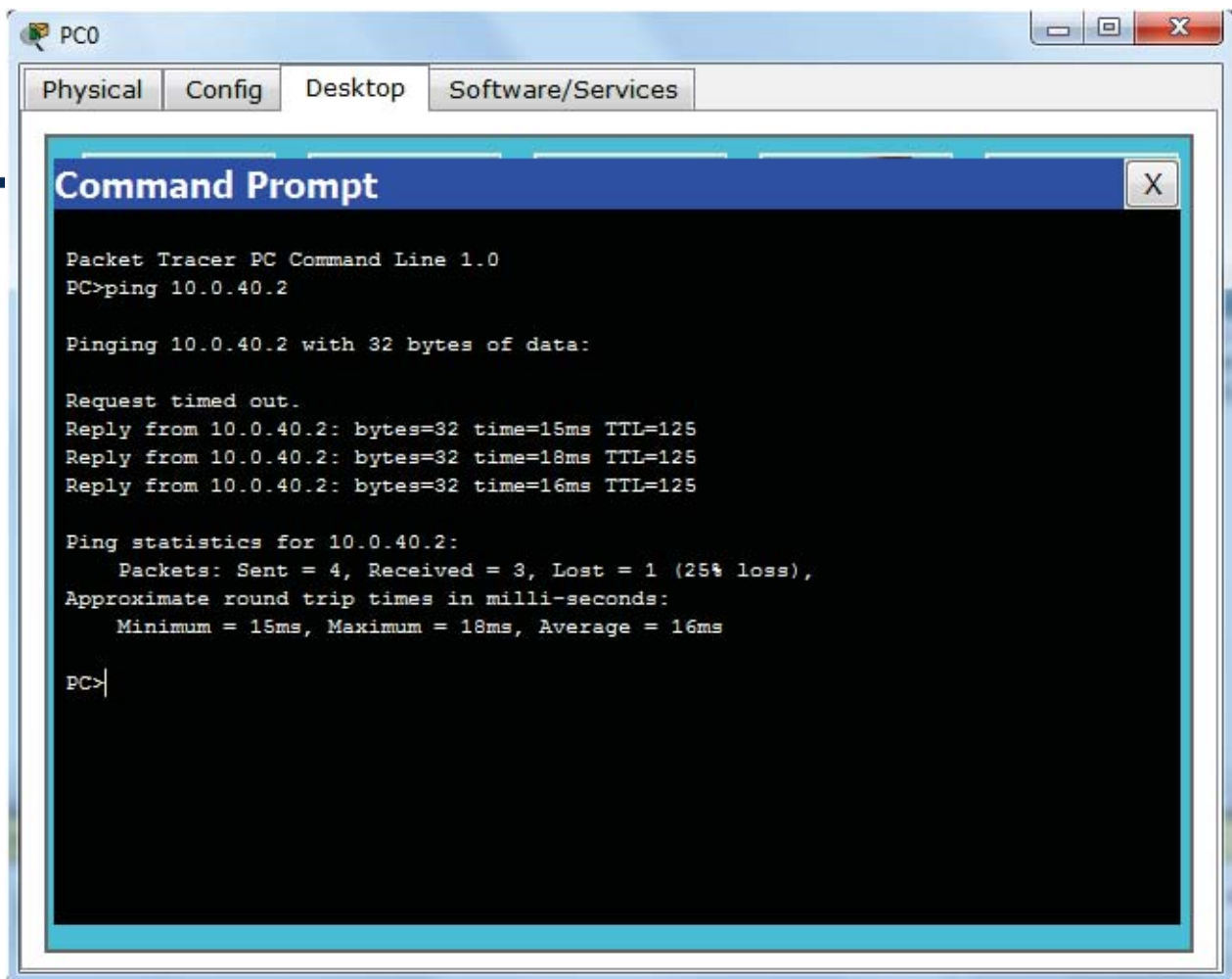
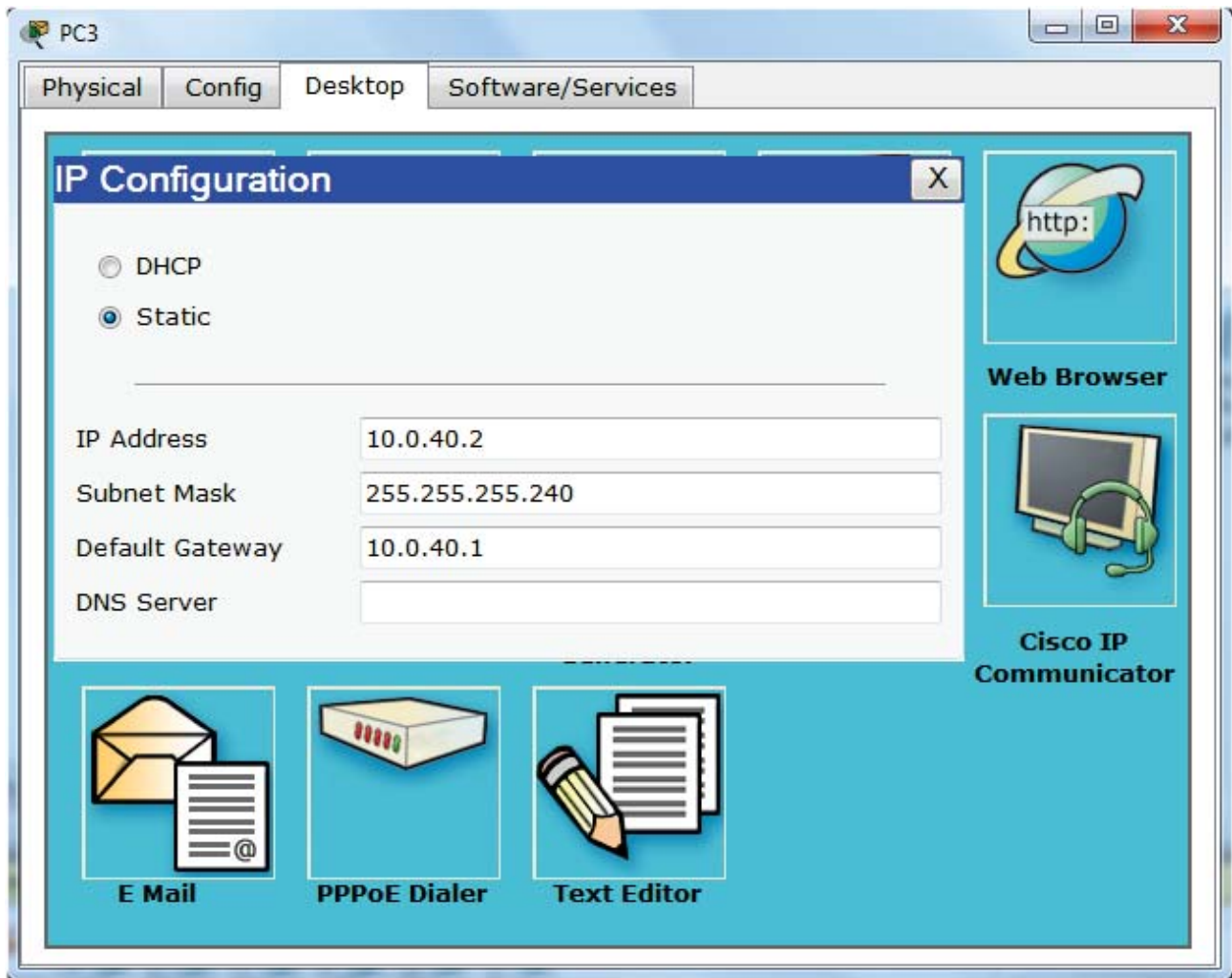
```
Interface fa0/0  
IP address 10.0.40.1 255.255.255.240  
No sh
```

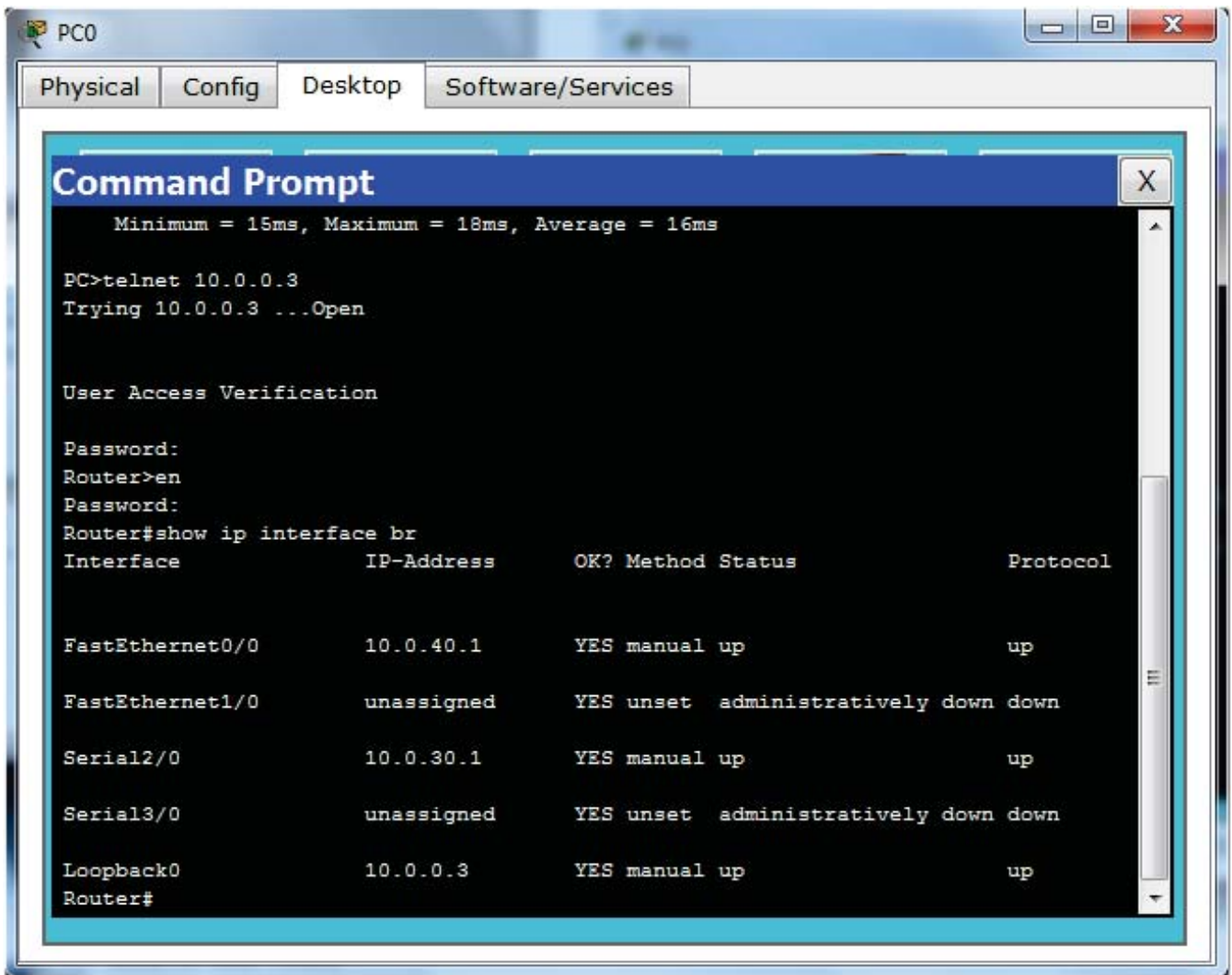
```
IP route 10.0.10.0 255.255.255.240 se2/0  
IP route 10.0.20.0 255.255.255.252 se2/0
```

```
IP route 10.0.30.0 255.255.255.252 se2/0  
IP route 10.0.40.0 255.255.255.240 fa0/0  
IP route 10.0.0.2 255.255.255.255 se2/0  
IP route 10.0.0.3 255.255.255.255 se2/0  
  
exit
```

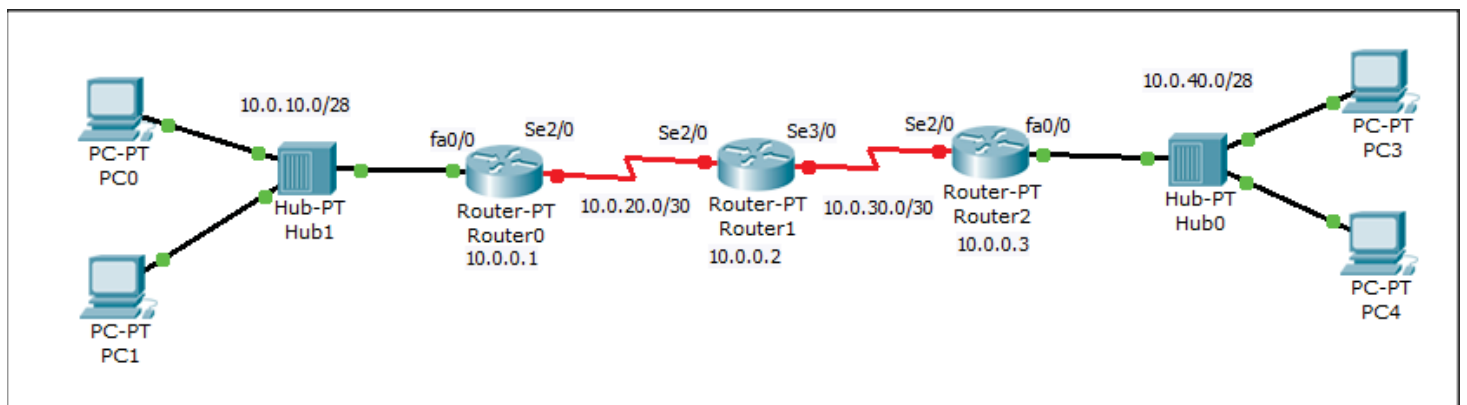
er Year, Practical App Network II







Topology 02 (3 routers static route with default route)



Router 01

```
enable
Config t
enable password cisco

line vty 0 4
password cisco
login

interface loopback 0
no sh
ip address 10.0.0.1 255.255.255.255

Interface fa0/0
IP address 10.0.10.1 255.255.255.240
No sh

Interface se2/0
IP address 10.0.20.1 255.255.255.252
No sh
clock rate 2000000

IP route 10.0.10.0 255.255.255.240 fa0/0
IP route 0.0.0.0 0.0.0.0 se2/0
```

Exit

Year, Practical App Network II

Router 02

```
enable
Config t
enable password cisco

line vty 0 4
password cisco
login

interface loopback 0
no sh
ip address 10.0.0.2 255.255.255.255

Interface se2/0
IP address 10.0.20.2 255.255.255.252
No sh

Interface se3/0
IP address 10.0.30.2 255.255.255.252
No sh

IP route 10.0.10.0 255.255.255.240 se2/0
IP route 10.0.20.0 255.255.255.252 se2/0
IP route 10.0.30.0 255.255.255.252 se3/0
```

```
IP route 10.0.40.0 255.255.255.240 se3/0
IP route 10.0.0.1 255.255.255.255 se2/0
IP route 10.0.0.3 255.255.255.255 se3/0
```

Exit

er Year, Practical App Network II

Router 03

```
enable  
Config t  
enable password cisco
```

```
line vty 0 4  
password cisco  
login
```

```
interface loopback 0  
no sh  
ip address 10.0.0.3 255.255.255.255
```

```
Interface se2/0  
IP address 10.0.30.1 255.255.255.252  
No sh  
clock rate 2000000
```

```
Interface fa0/0  
IP address 10.0.40.1 255.255.255.240  
No sh
```

```
IP route 10.0.40.0 255.255.255.240 fa0/0  
IP route 0.0.0.0 0.0.0.0 se2/0
```

```
exit
```

Year, Practical App Network II

