

Lecture (06) Routers I

By:
Dr. Ahmed ElShafee

Dr. Ahmed ElShafee, ACU : Semester Year, Practical App Network II

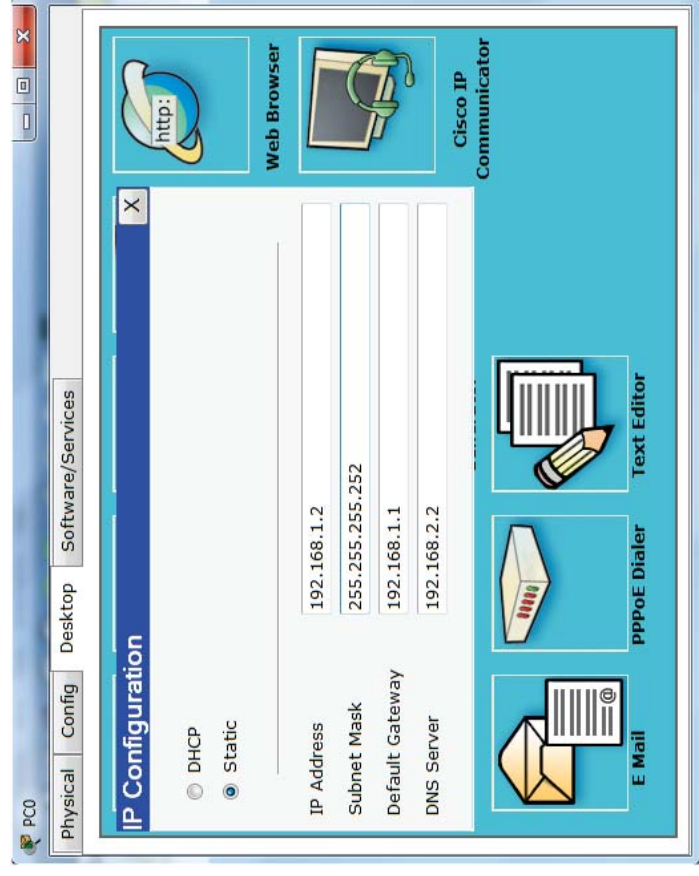
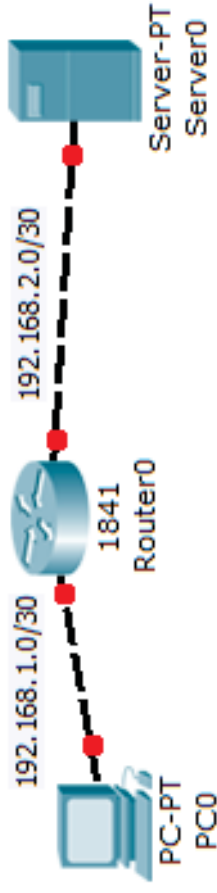
```
Enable
Config t
Interface fa0/0
IP address 192.168.1.1 255.255.255.252
No sh

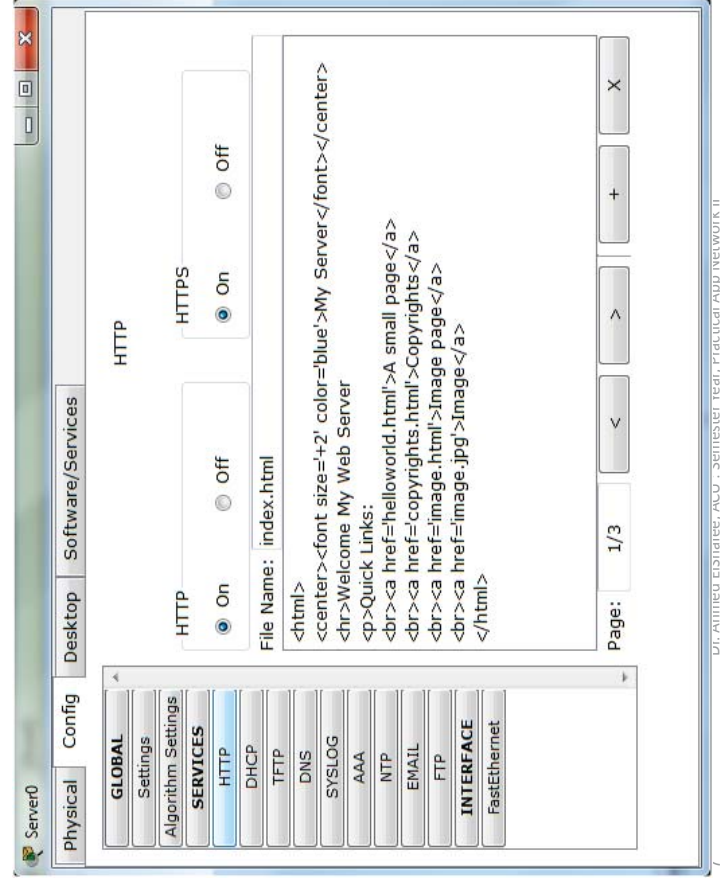
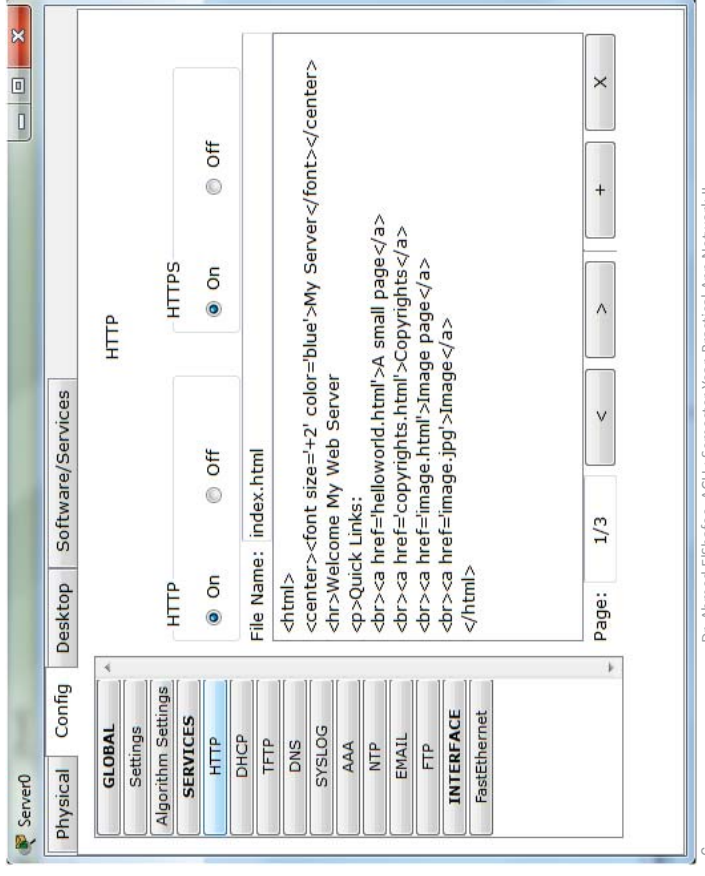
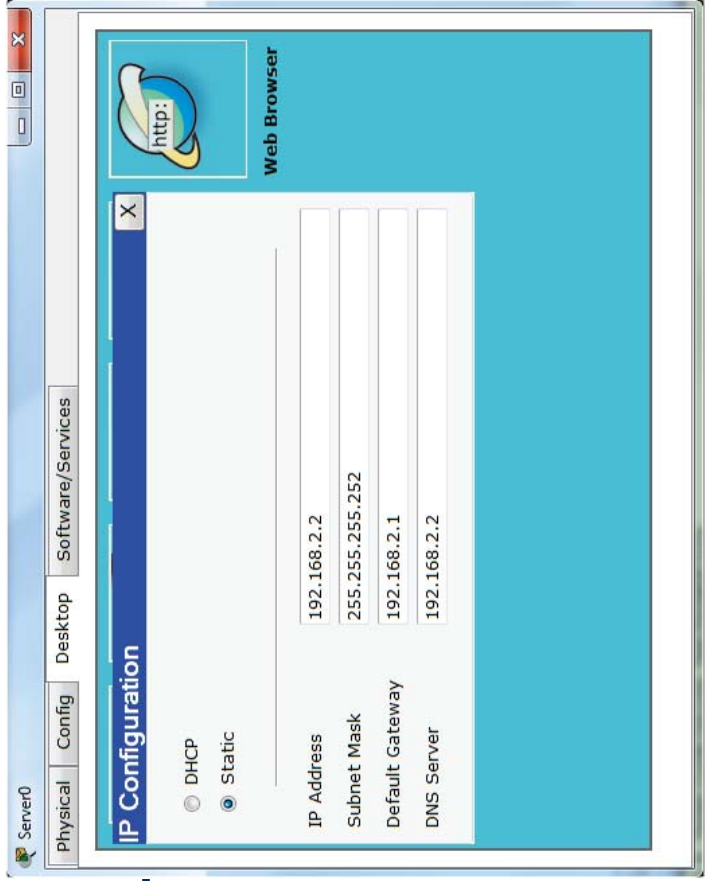
Interface fa0/1
IP address 192.168.2.1 255.255.255.252
No sh

IP route 192.168.1.0 255.255.255.252
fa0/0
IP route 192.168.2.0 255.255.255.252
fa0/1

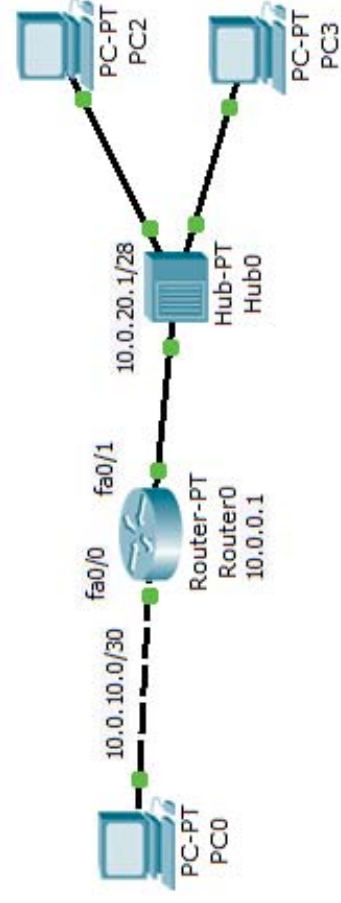
copy running-config startup-config
```

Single router I





Single router II



copy running-config startup-config

```
enable
Config t
enable password cisco

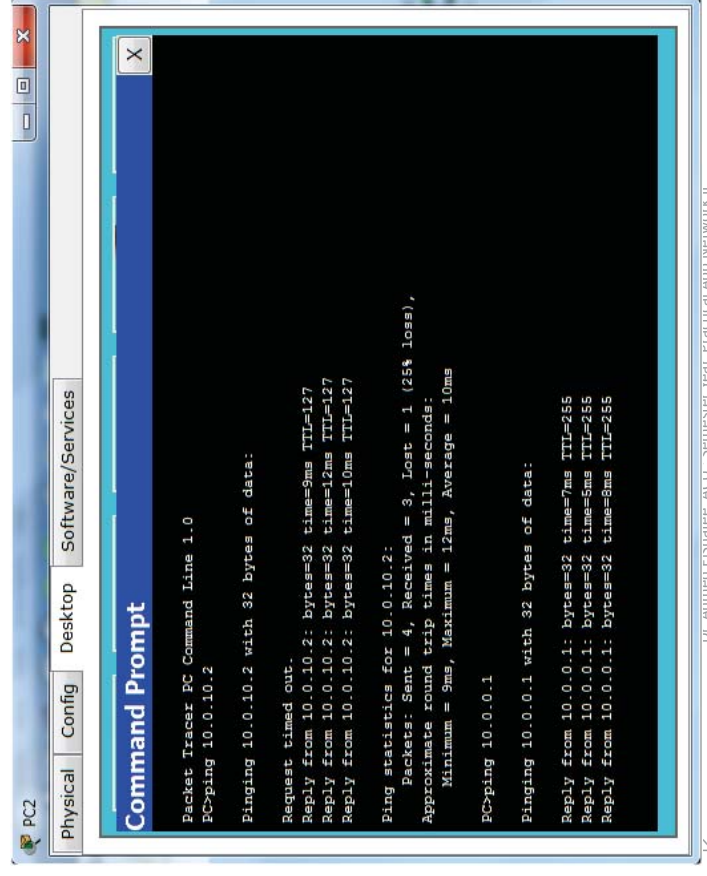
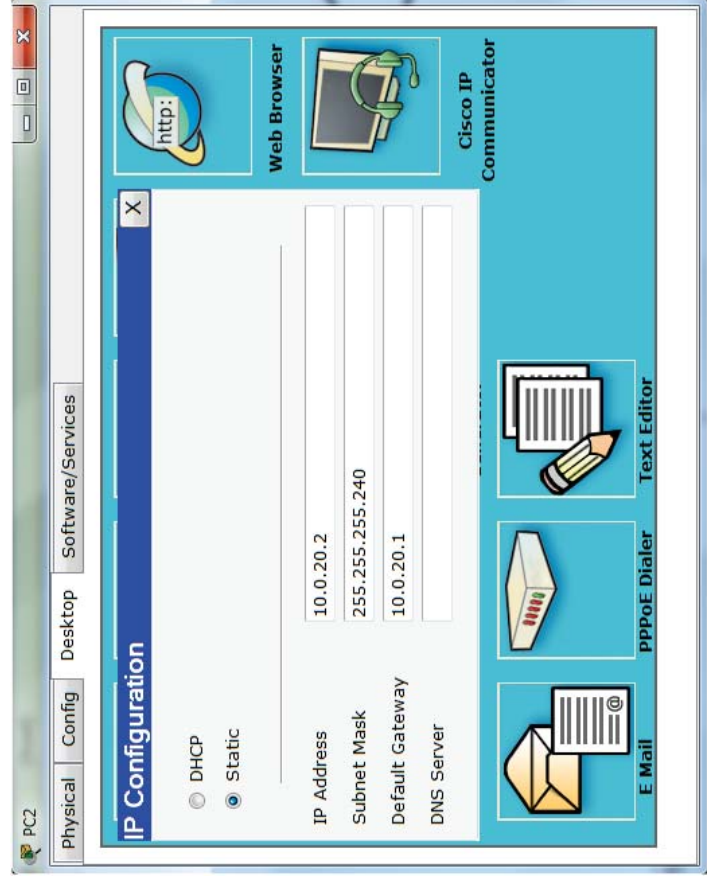
line vty 0 4
password cisco
login

Interface fa0/0
IP address 10.0.10.1 255.255.255.252
No sh

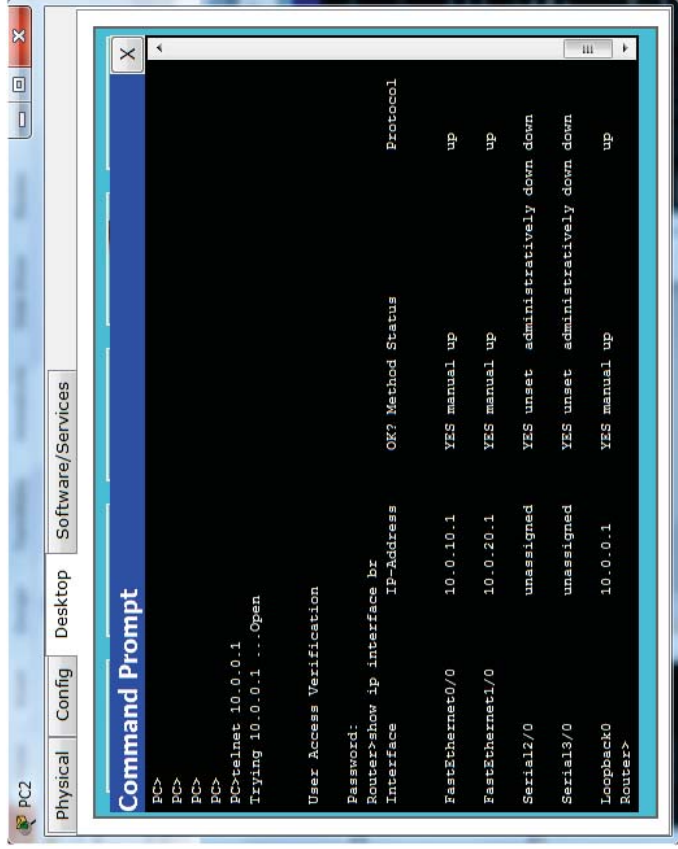
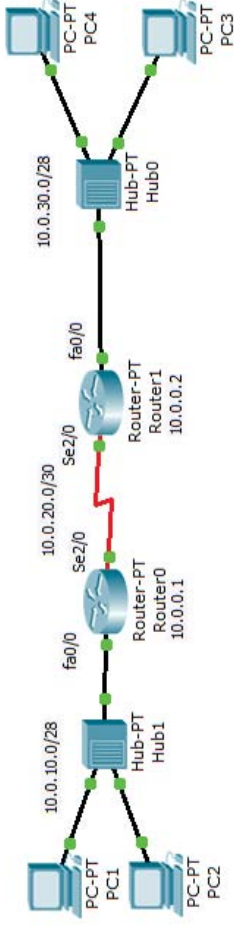
Interface fa1/0
IP address 10.0.20.1 255.255.255.240
No sh

IP route 10.0.10.0 255.255.255.252 fa0/0
IP route 10.0.20.0 255.255.255.240 fa1/0

interface loopback 0
no sh
ip address 10.0.0.1 255.255.255.255
exit
```



2 cascaded routers



```

Enable
Config t
hostname Router0
enable password cisco

line vty 0 4
password cisco
login

interface Loopback 0
ip address 10.0.0.1 255.255.255.255

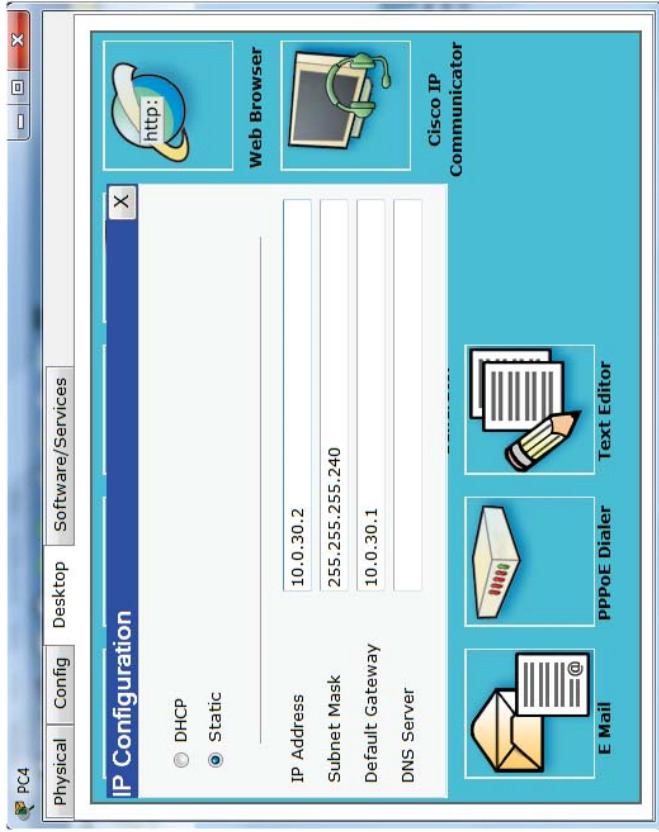
interface FastEthernet0/0
ip address 10.0.10.1 255.255.255.240
no sh

interface Serial2/0
ip address 10.0.20.1 255.255.255.252
no sh
clock rate 2000000

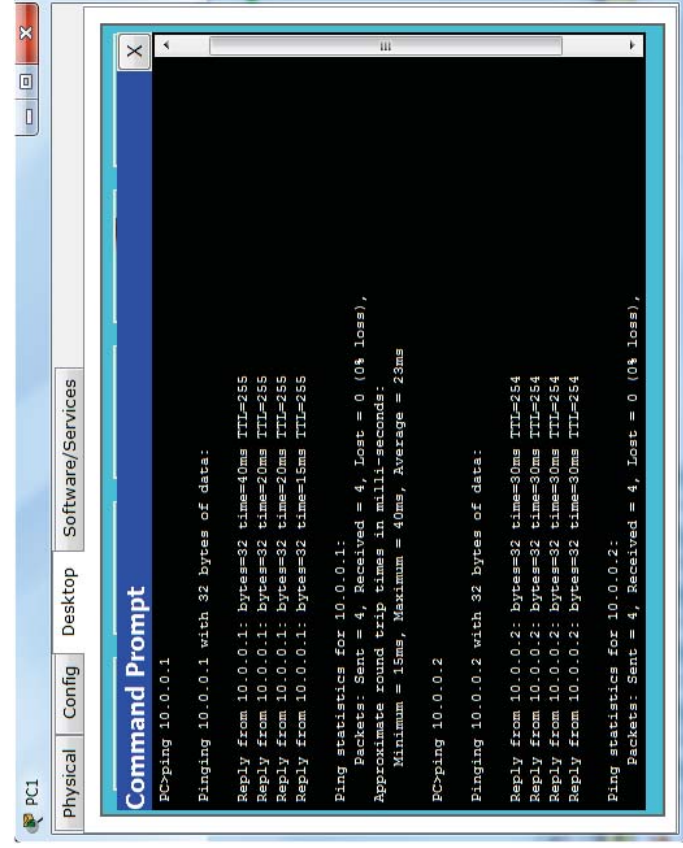
ip route 10.0.10.0 255.255.255.0 Serial2/0
FastEthernet0/0
ip route 10.0.20.0 255.255.255.0 Serial2/0
ip route 10.0.0.2 255.255.255.255
Serial2/0
ip route 10.0.30.0 255.255.255.0 Serial2/0

exit
copy running-config startup-config
    
```

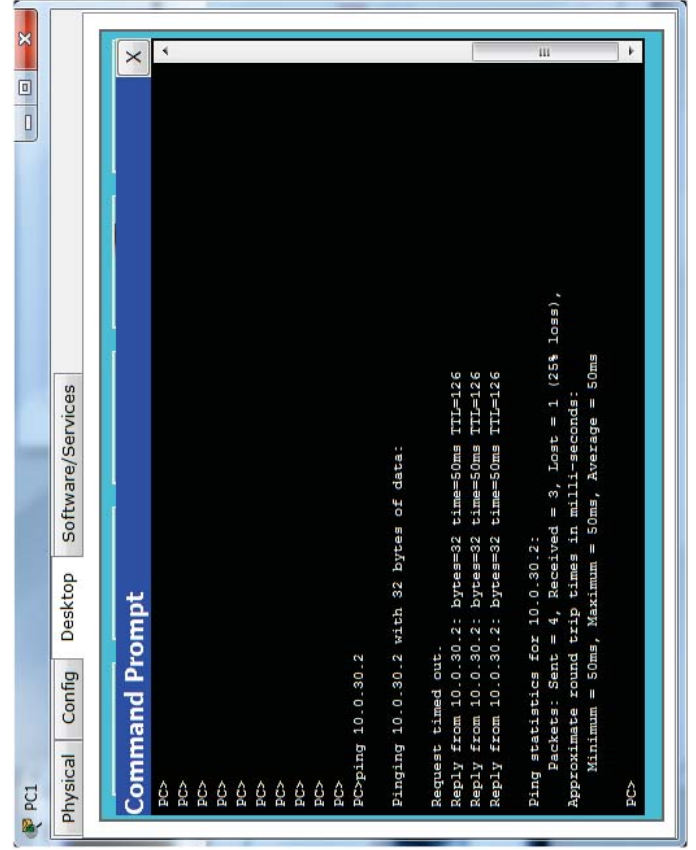




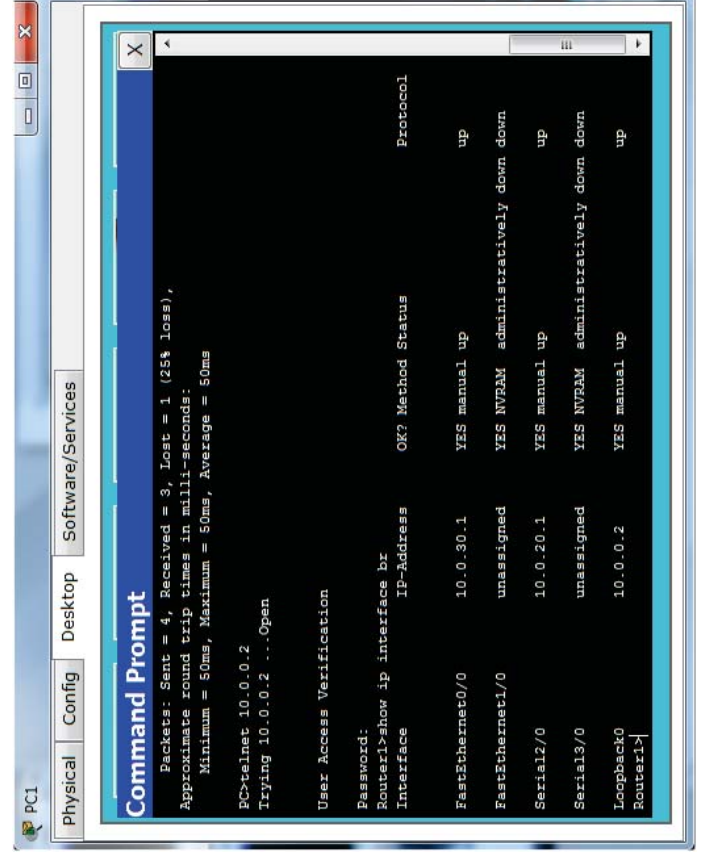
17



18



19



20



**Thanks,..
See you next week (ISA),...**