



# Lecture (06)

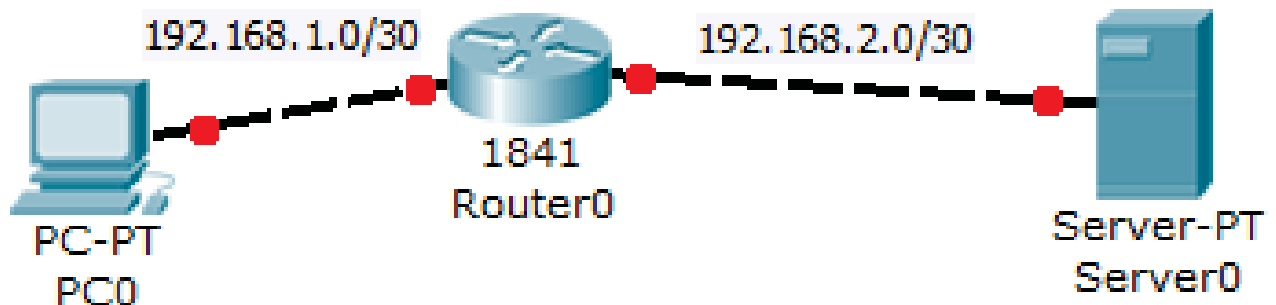
## Routers I

By:

**Dr. Ahmed ElShafee**

Dr. Ahmed ElShafee, ACU : Semester Year, Practical App Network II

### Single router I

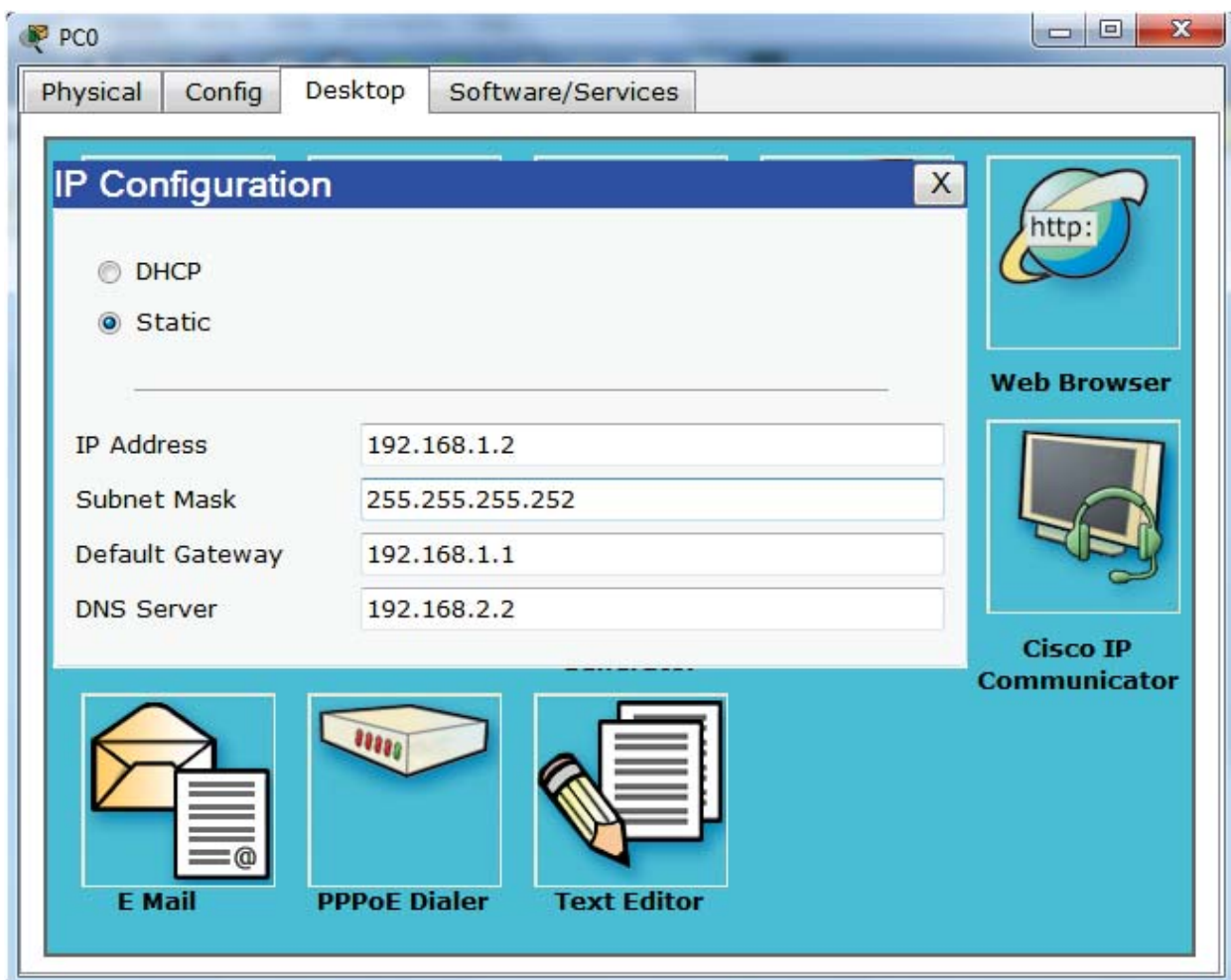


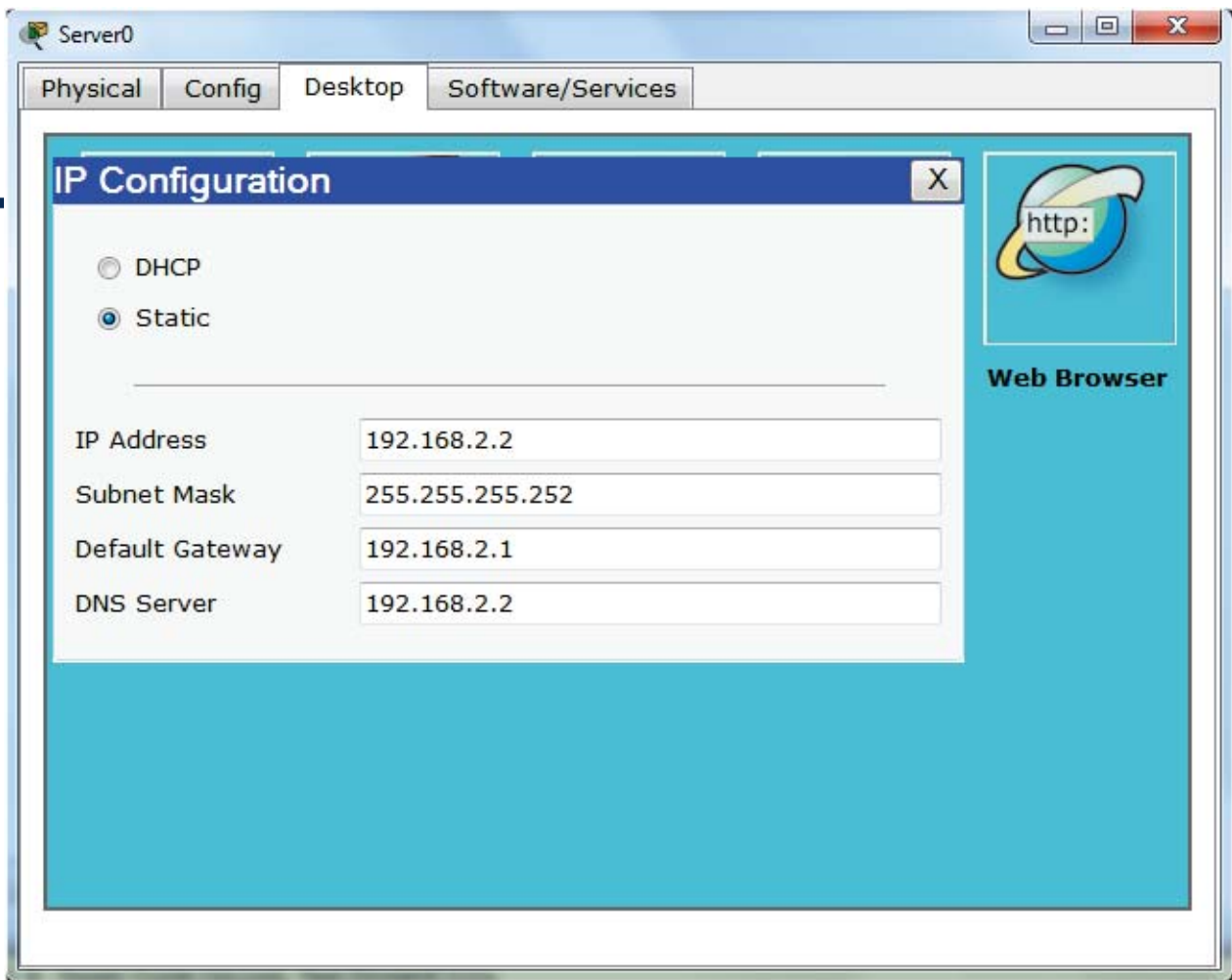
```
Enable
Config t
Interface fa0/0
IP address 192.168.1.1 255.255.255.252
No sh
```

```
Interface fa0/1
IP address 192.168.2.1 255.255.255.252
No sh
```

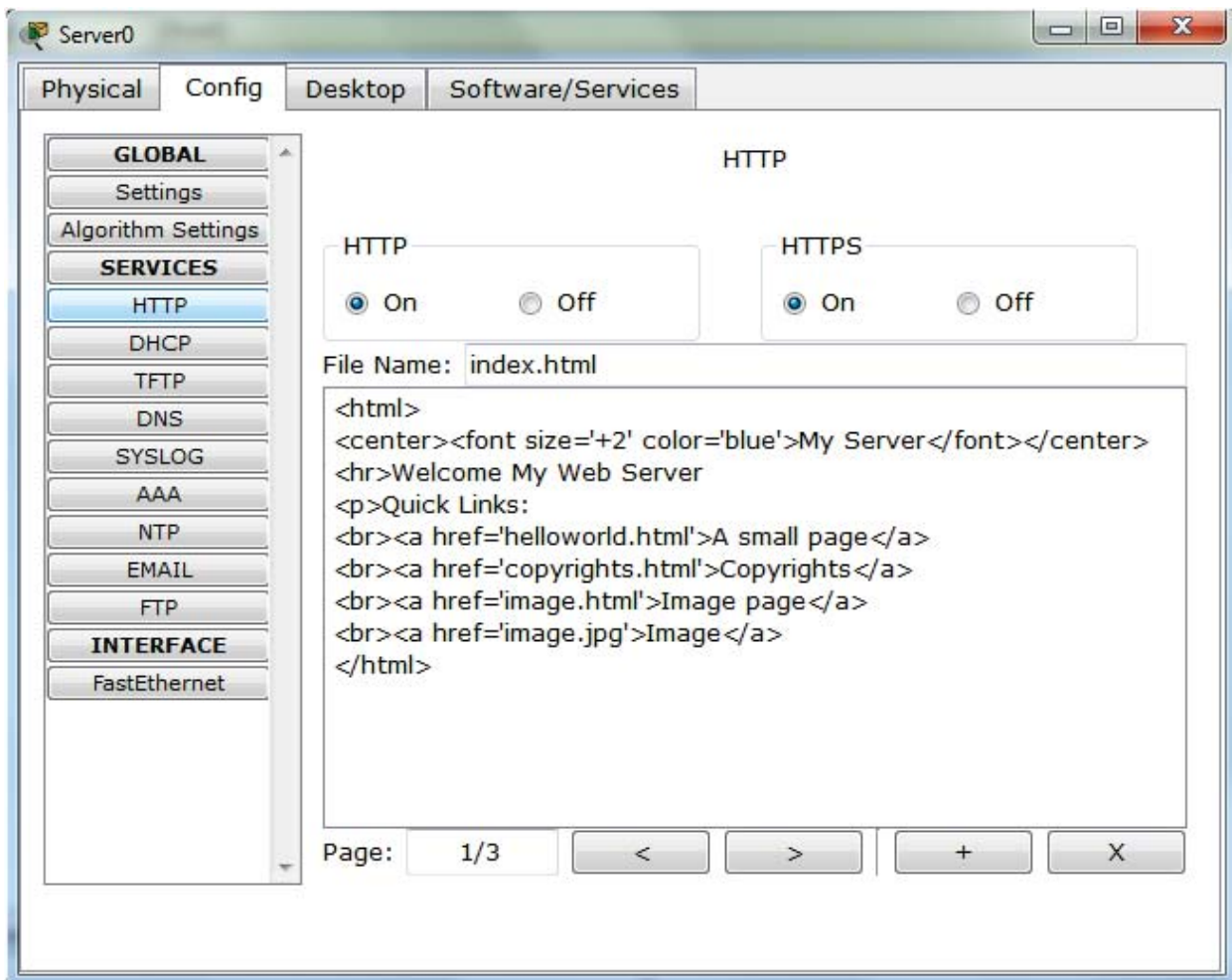
```
IP route 192.168.1.0 255.255.255.252
fa0/0
IP route 192.168.2.0 255.255.255.252
fa0/1
```

```
copy running-config startup-config
```

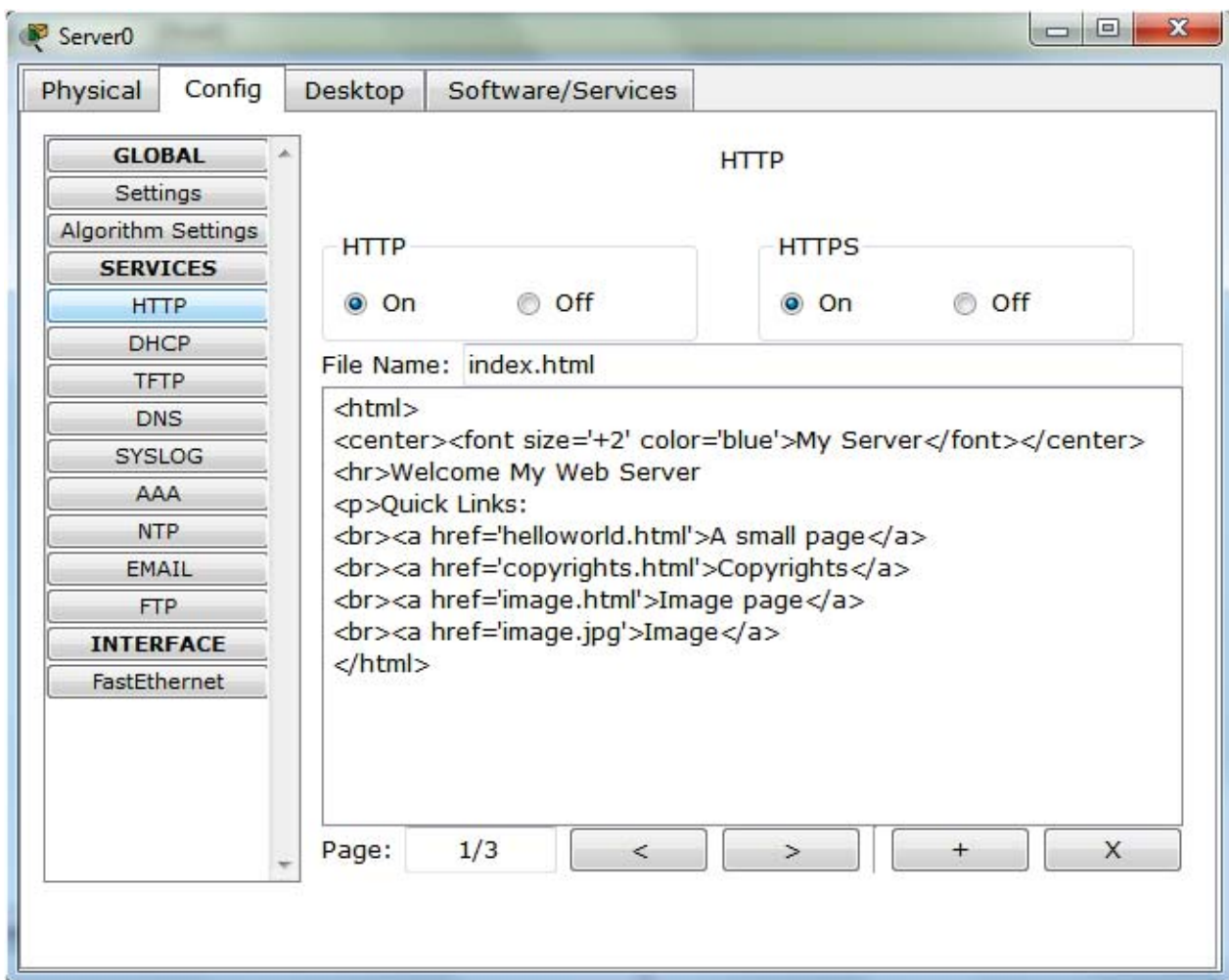




Dr. Ahmed ElShafee, ACU : Semester Year, Practical App network II

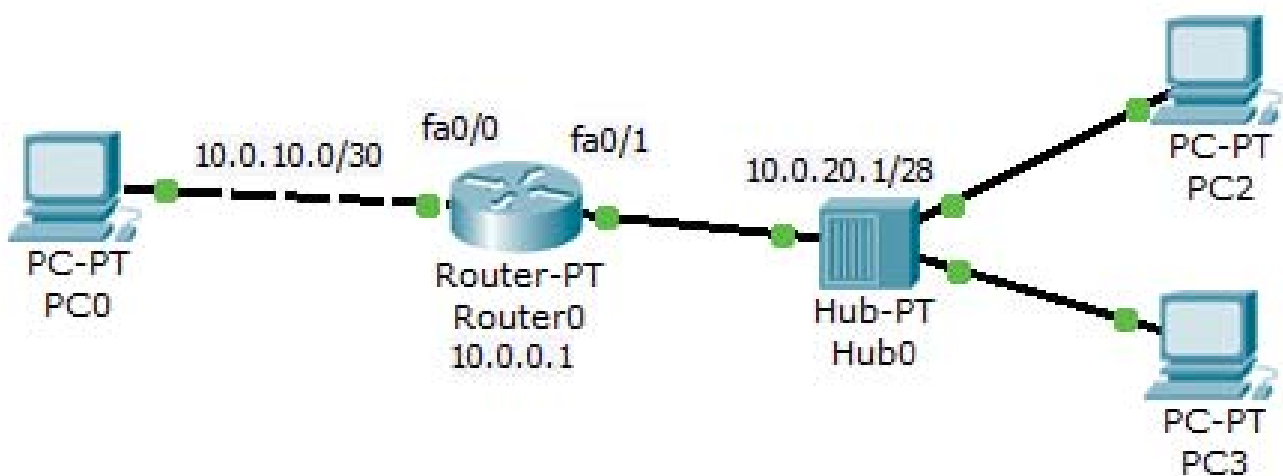


Dr. Ahmed ElShafee, ACU : Semester Year, Practical App Network II



Dr. Ahmed ElShafee, ACU : Semester Year, Practical App network II

## Single router II



```
enable
Config t
enable password cisco
```

```
line vty 0 4
password cisco
login
```

```
Interface fa0/0
IP address 10.0.10.1 255.255.255.252
No sh
```

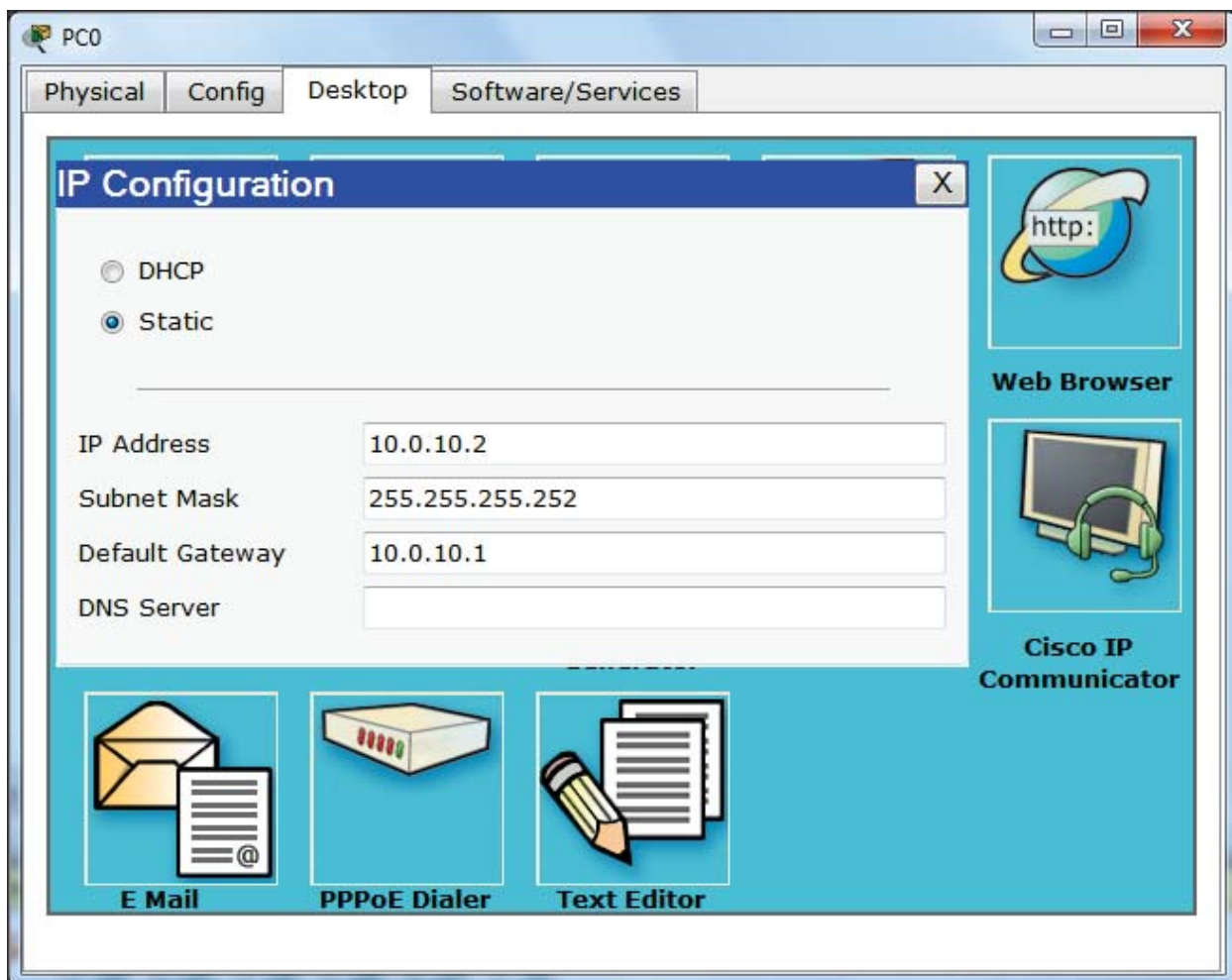
```
Interface fa1/0
IP address 10.0.20.1 255.255.255.240
No sh
```

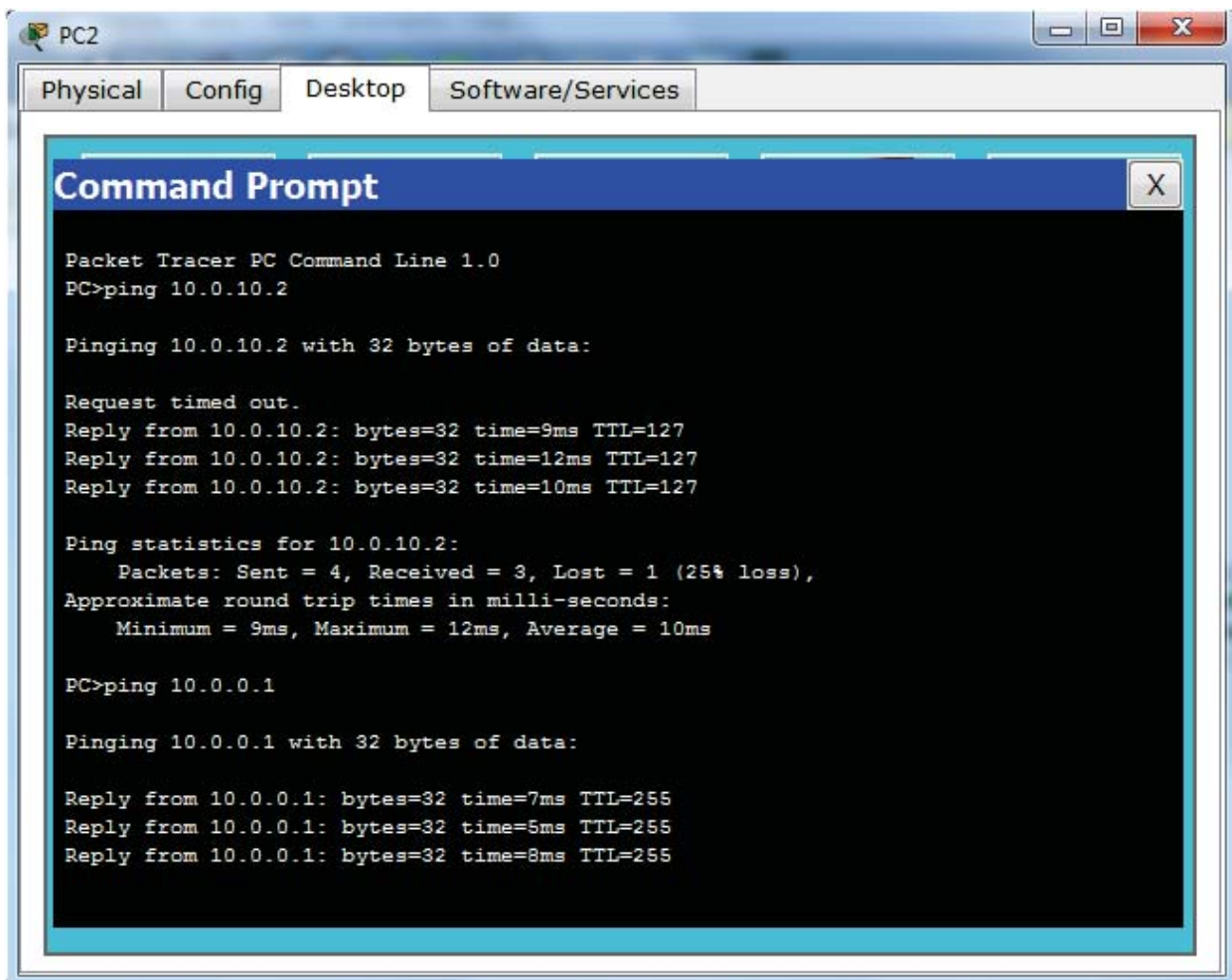
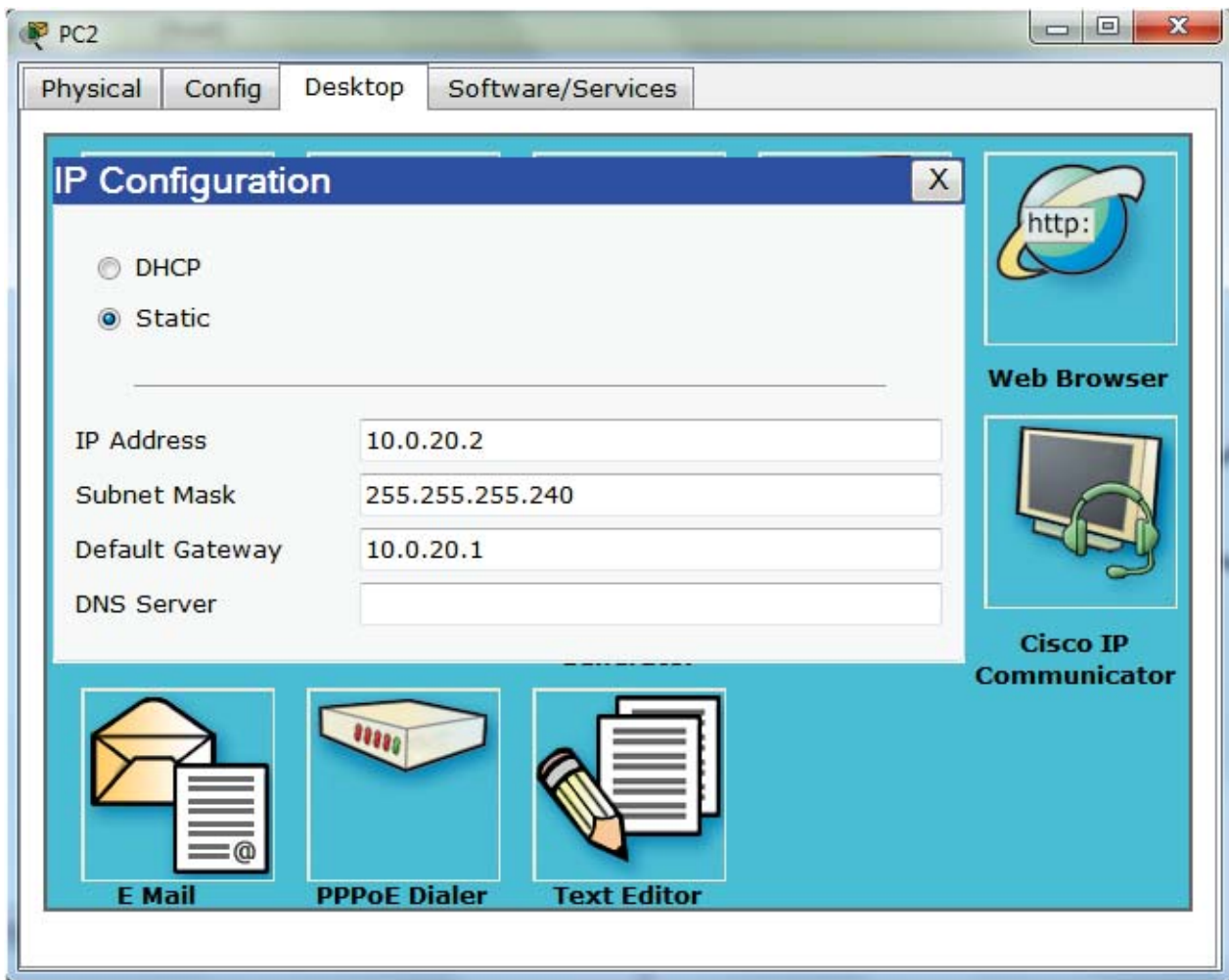
```
IP route 10.0.10.0 255.255.255.252 fa0/0
IP route 10.0.20.0 255.255.255.240 fa1/0
```

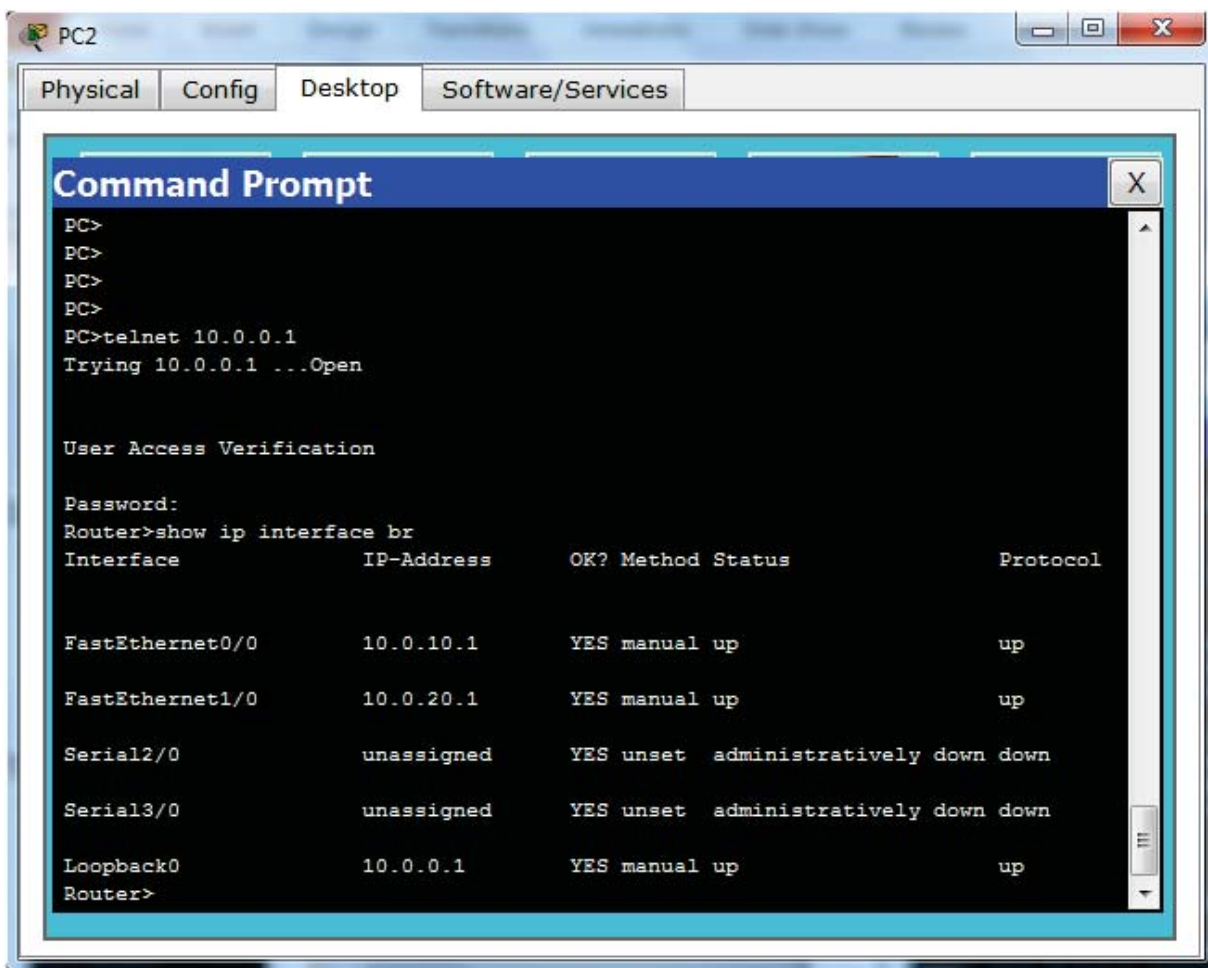
```
interface loopback 0
no sh
ip address 10.0.0.1 255.255.255.255
exit
```

copy running-config startup-config

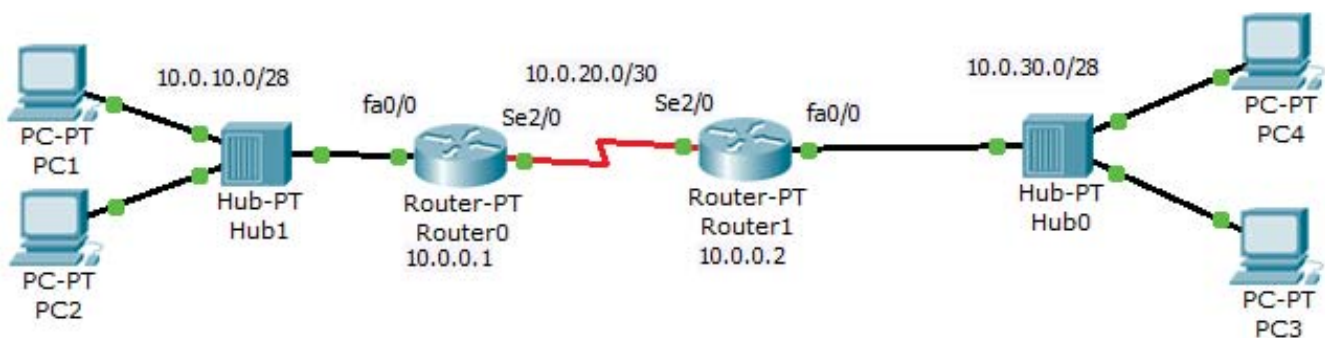
Year, Practical App Network II







## 2 cascaded routers



Enable  
Config t

hostname Router0  
enable password cisco

line vty 0 4  
password cisco  
login

interface Loopback 0  
ip address 10.0.0.1 255.255.255.255

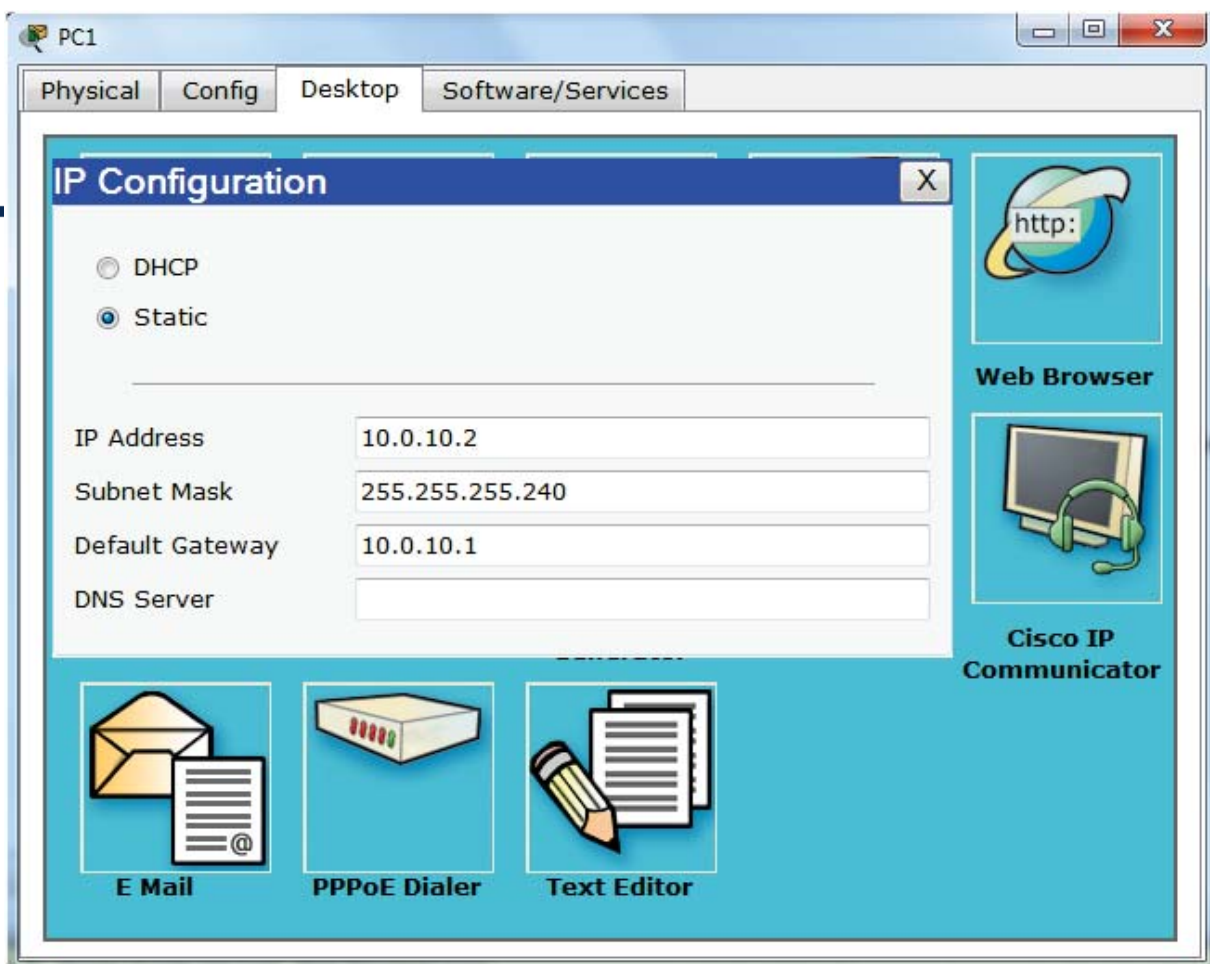
interface FastEthernet0/0  
ip address 10.0.10.1 255.255.255.240  
no sh

interface Serial2/0  
ip address 10.0.20.1 255.255.255.252  
no sh  
clock rate 2000000

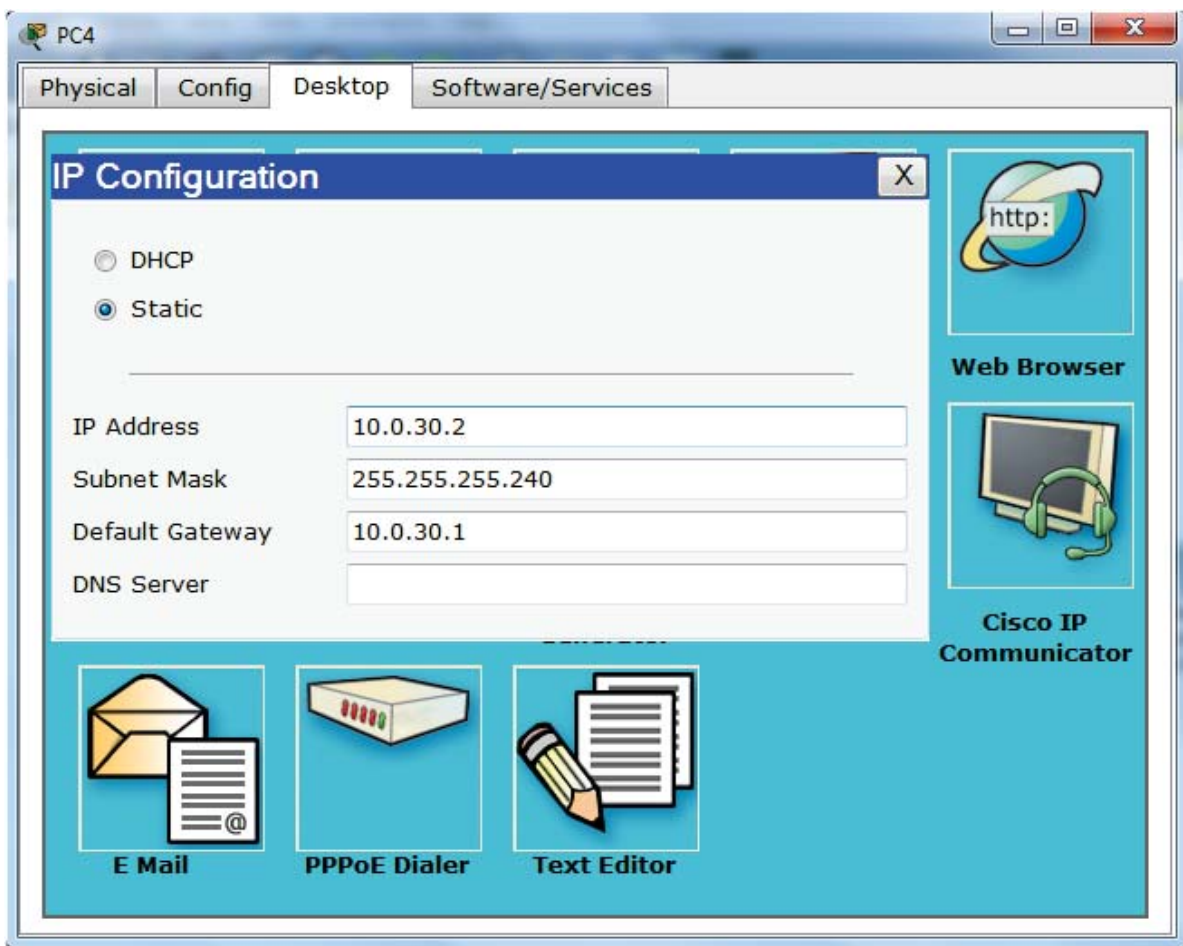
```
ip route 10.0.10.0 255.255.255.0
FastEthernet0/0
ip route 10.0.20.0 255.255.255.0 Serial2/0
ip route 10.0.0.2 255.255.255.255
Serial2/0
ip route 10.0.30.0 255.255.255.0 Serial2/0
```

exit

copy running-config startup-config

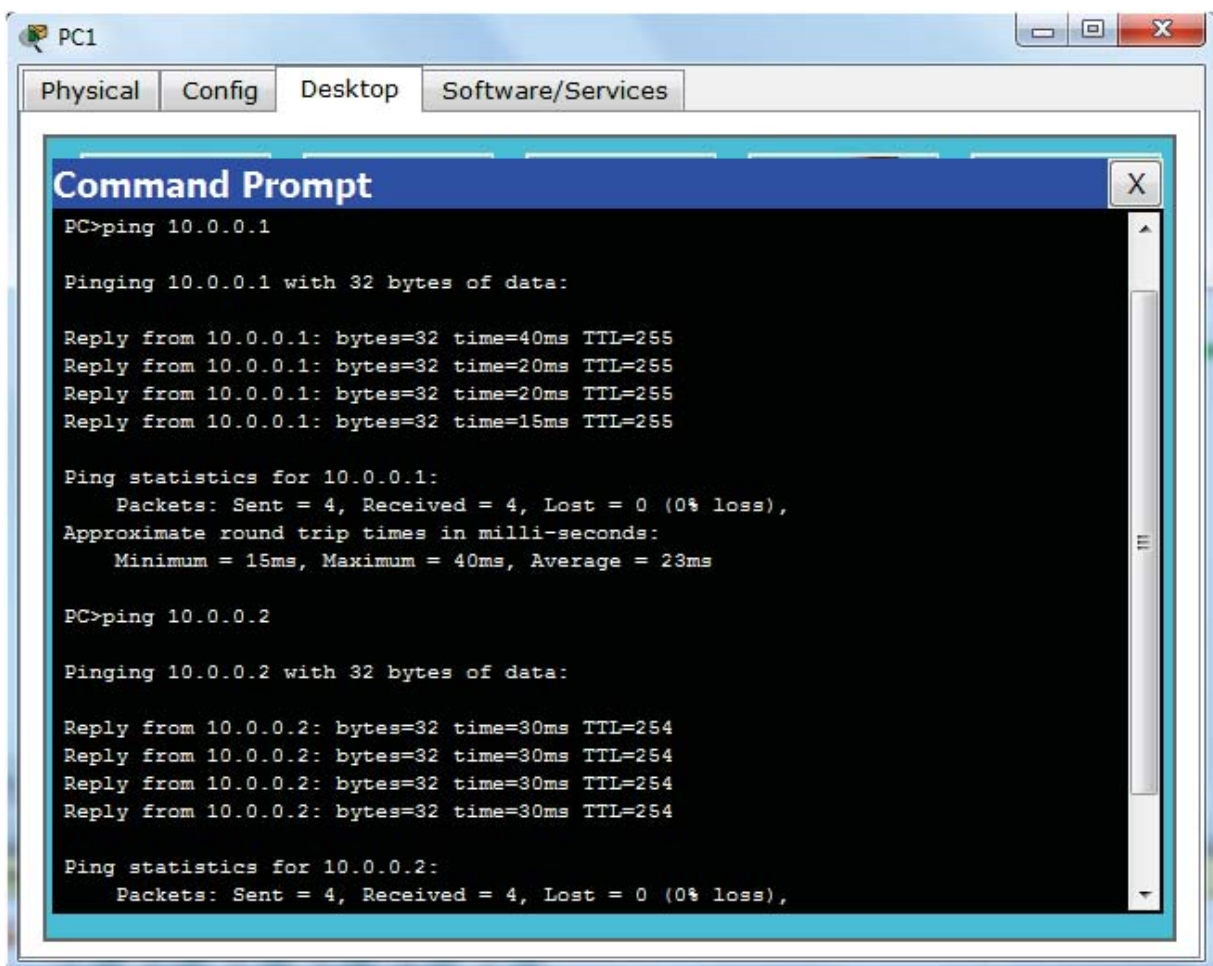






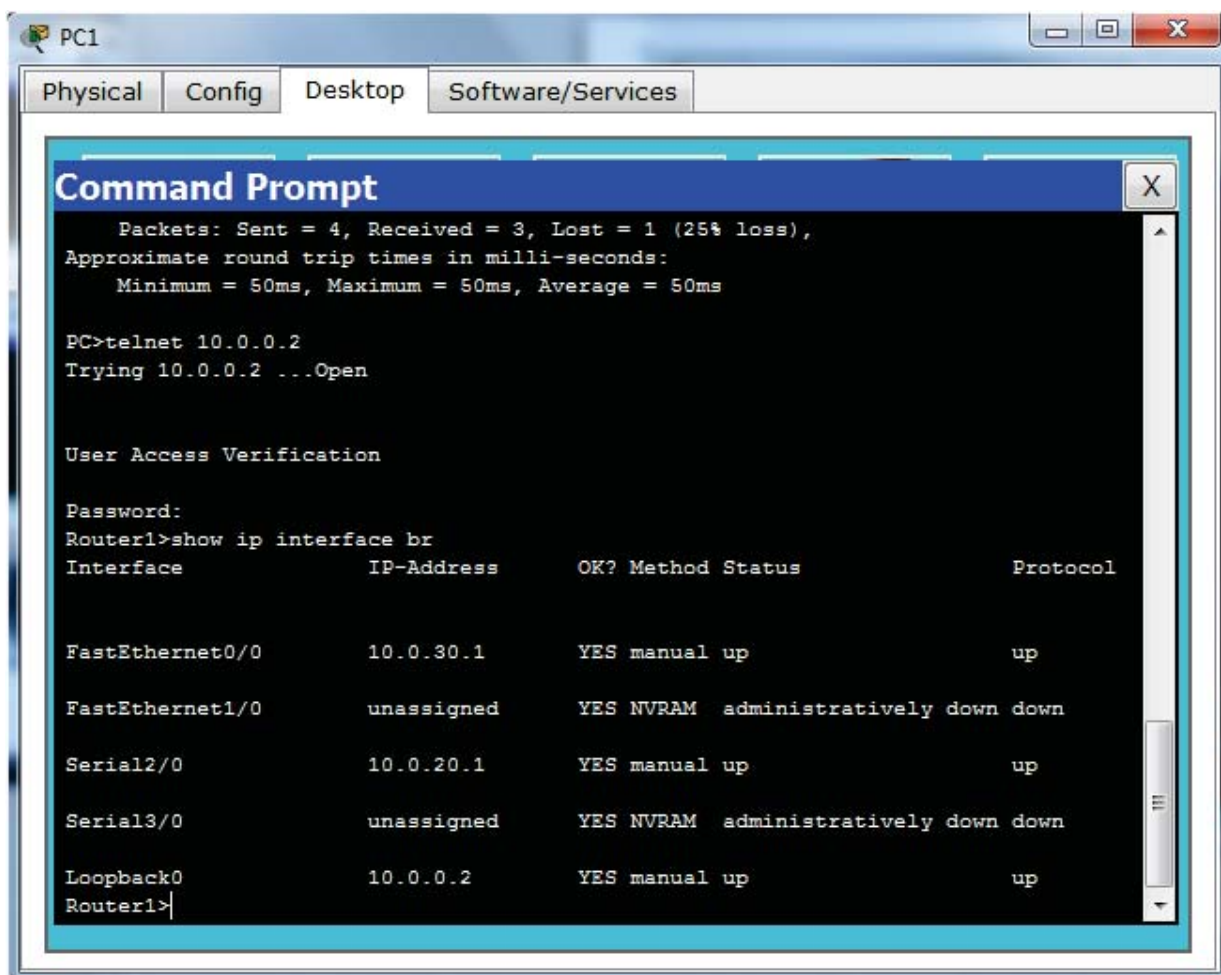
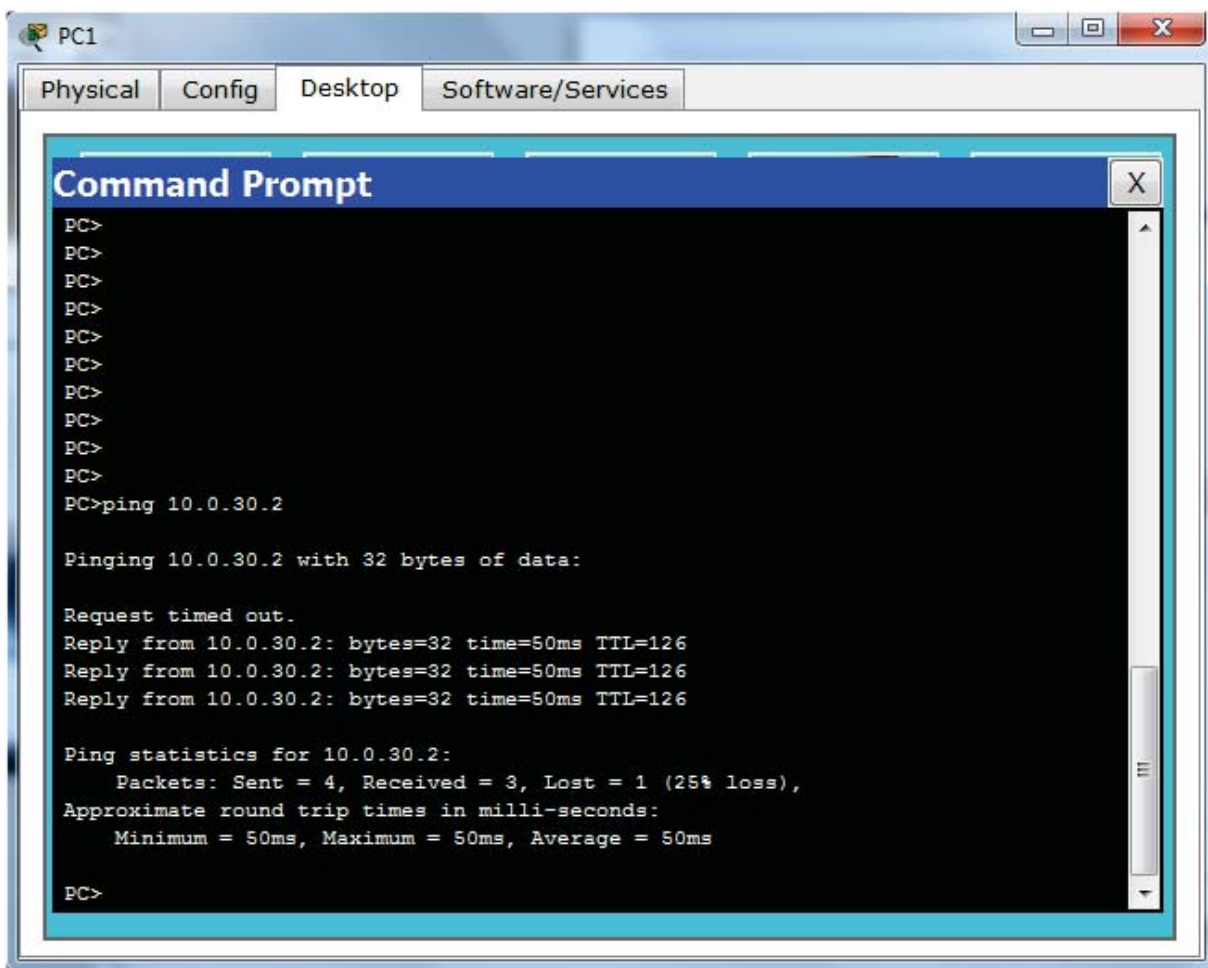
17

Dr. Ahmed ElShafee, ACU : Semester Year, Practical App Network II



18

Dr. Ahmed ElShafee, ACU : Semester Year, Practical App Network II





**Thanks,..**  
**See you next week (ISA),...**