



Lecture (03)

Assignment

By:

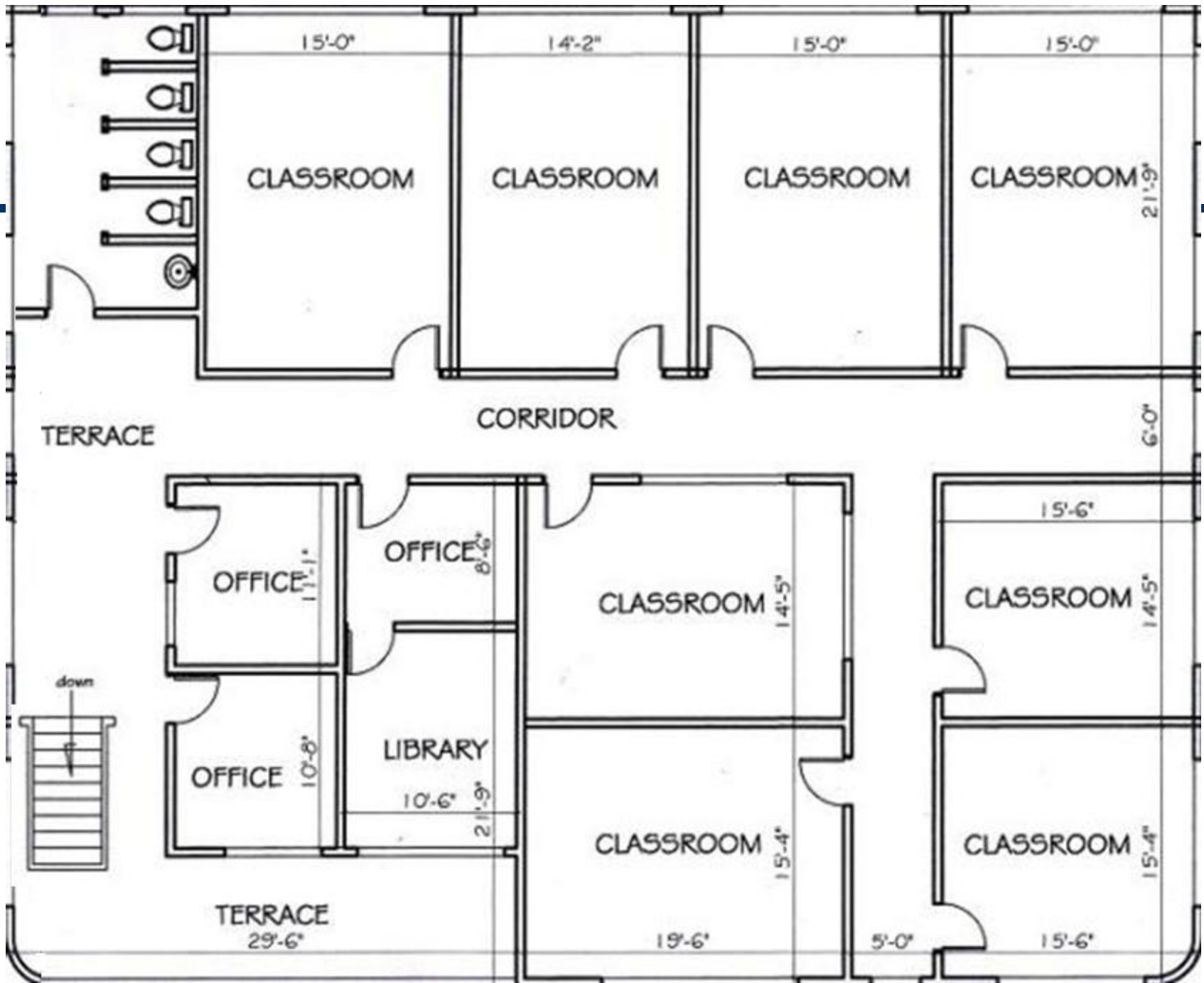
Dr. Ahmed ElShafee

Exercise

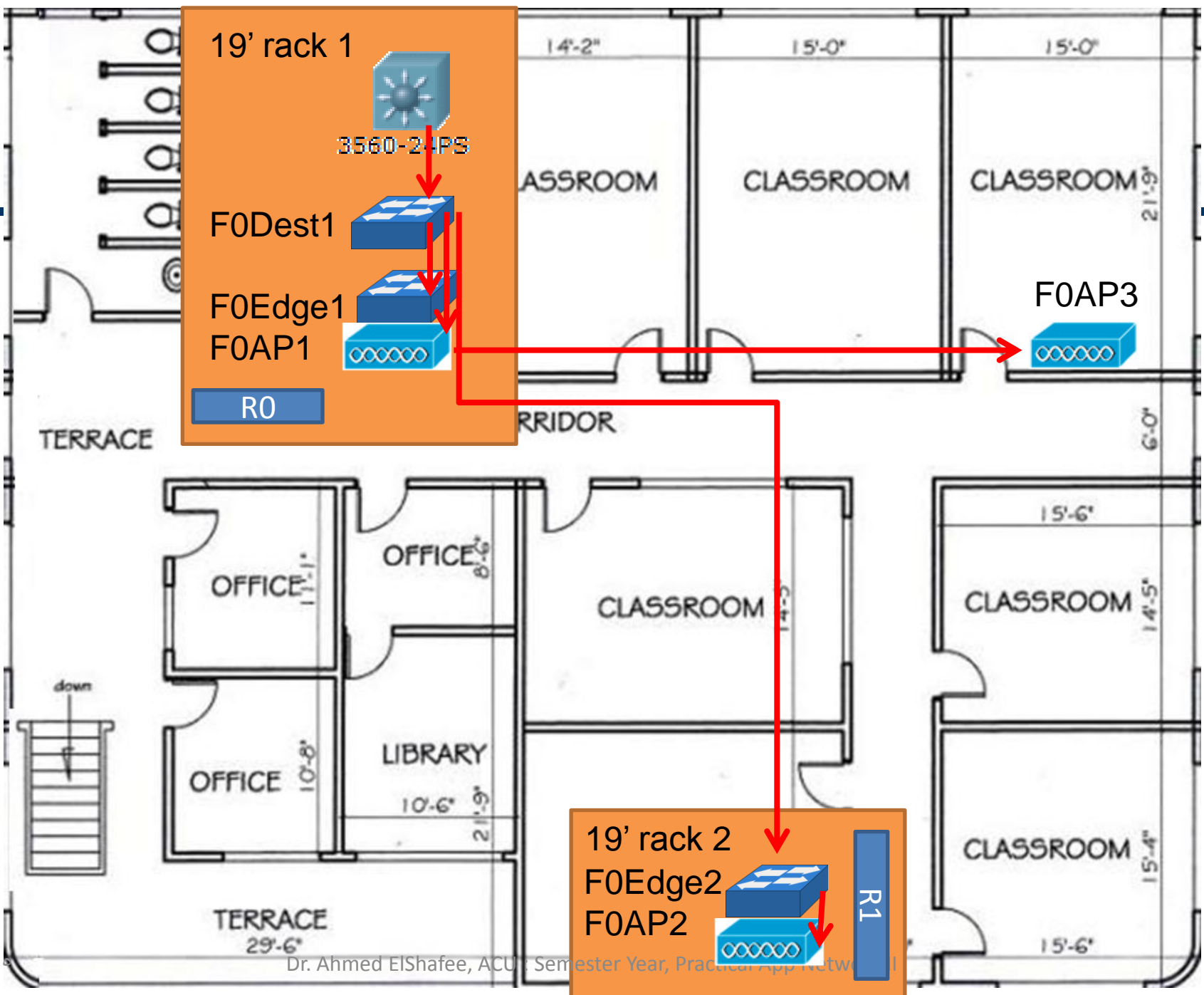
- as a network administrator you are required to specify number and model of switches needed to cover a school building of three floors; ground, 1st and 2nd
- The following slide shows the plan
- Specify suggested number and the type of switches to cover the whole building with required network service.
- You are requested to cover the whole building with wireless LAN, specify the number and the location of required access points.
- Administrator suggested to divide physical LAN into 4 logical LAN, the core is responsible to broadcast logical LANs information for other switches.

-
- Administrator decided to assign the first seven ports on edge switches to the first logical LAN, 2nd seven ports to the 2nd logical LAN, and the 3rd seven ports to the 3rd logical, two ports from 4th logical LAN and will be used to create extended service set (wireless LAN), the last port is used to exchange traffic edge and distributor switch.
 - A DHCP server is responsible of assigning IP for all PCs in all logical LANs
 - Deliver a simulated network on packet tracer software
 - Deliver the configuration for each switch on the network
 - Deliver configuration of a PC on each VLAN
 - Deliver configuration of an Access point
 - Deliver configuration of DHCP server

G Floor



G Floor



1st Floor

From core @ G Floor



3560-24PS

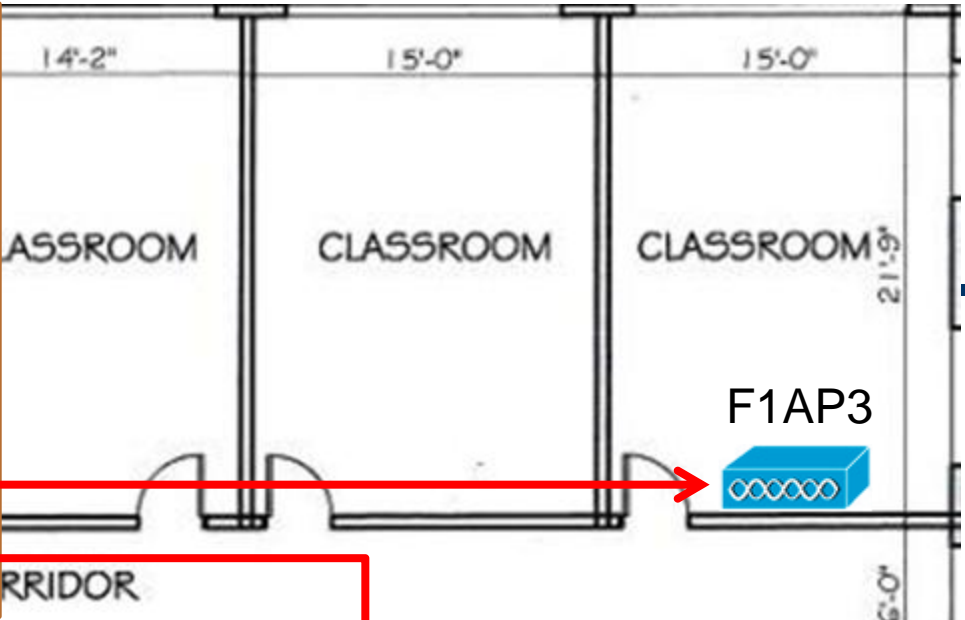
19' rack 3

F1Dest1

F1Edge1

F1AP1

R0



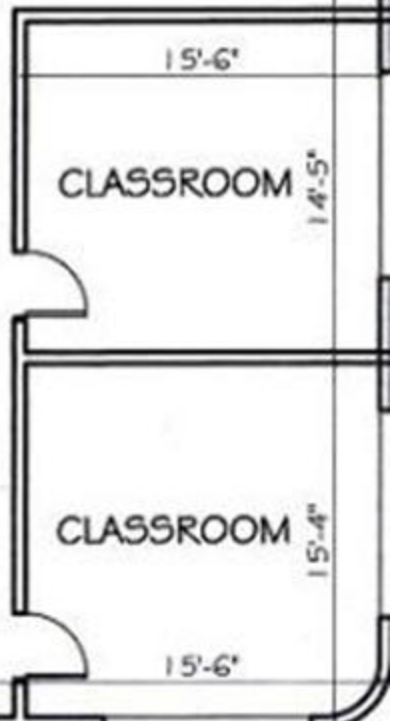
F1AP3

19' rack 4

F1Edge2

F1AP2

R1



G Floor

From core @ G Floor



3560-24PS

19' rack 5

F2Dest1



F2Edge1



F2AP1



R0

CLASSROOM

CLASSROOM

CLASSROOM

F2AP3



HALLWAY

TERRACE

OFFICE

OFFICE

CLASSROOM

CLASSROOM

OFFICE

LIBRARY

CLASSROOM

TERRACE

19' rack 6

F2Edge2

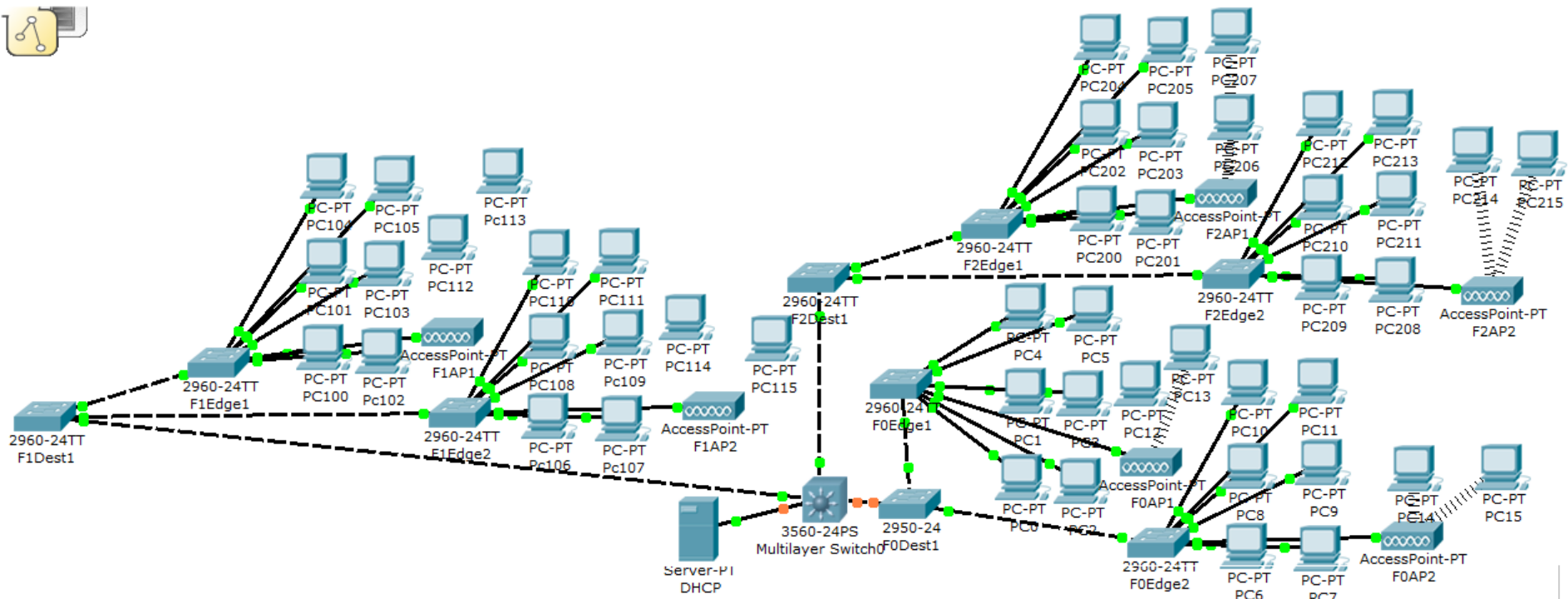


F2AP2



R1

Topology





Thanks,..
See you next week (ISA),...