

# Lecture (01)

## Introduction to Computer Networking Concepts

---

Dr. Ahmed M. ElShafee

Dr. Ahmed ElShafee, ACU Fall2012, Network II

### Agenda

---

- Perspectives on Networking
- Eight simple steps to develop a computer network
- What about the real network?

# Perspectives on Networking

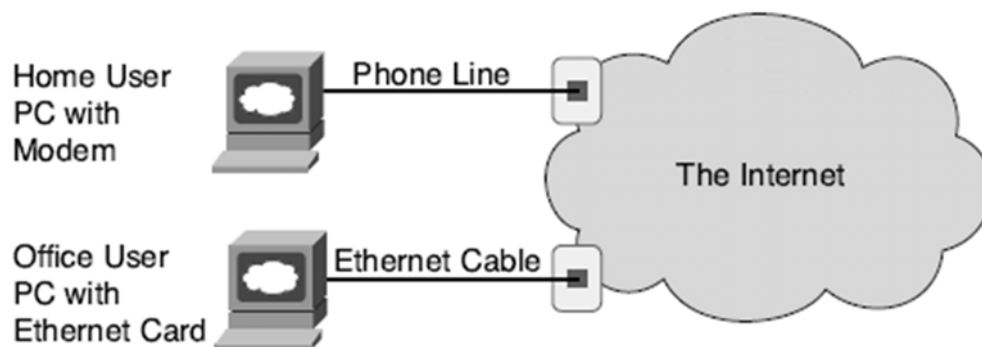
## ***End-User Perspective on Networks***

The user plugs in the phone line from the wall into a modem in a PC.

The user plugs PC network card to ADSL modem.

Uses his laptop to connect ADSL modem through wireless LAN.

So user is directly connected the internet.

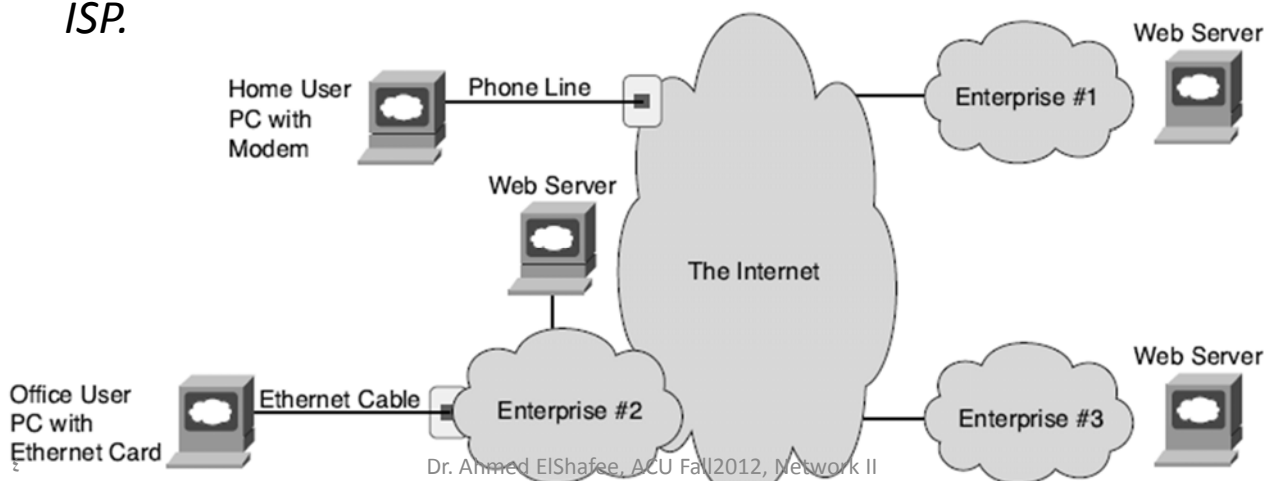


Dr. Ahmed ElShafee, ACU Fall2012, Network II

# Perspectives on Networking (2)

## ***Enterprises Perspective on Networks and the Internet***

*When you go to your collage or your job and connect to “the network,” you are most likely connecting to the private network, or enterprise network, for that school or company. That network, in turn, is connected to the Internet through an ISP.*

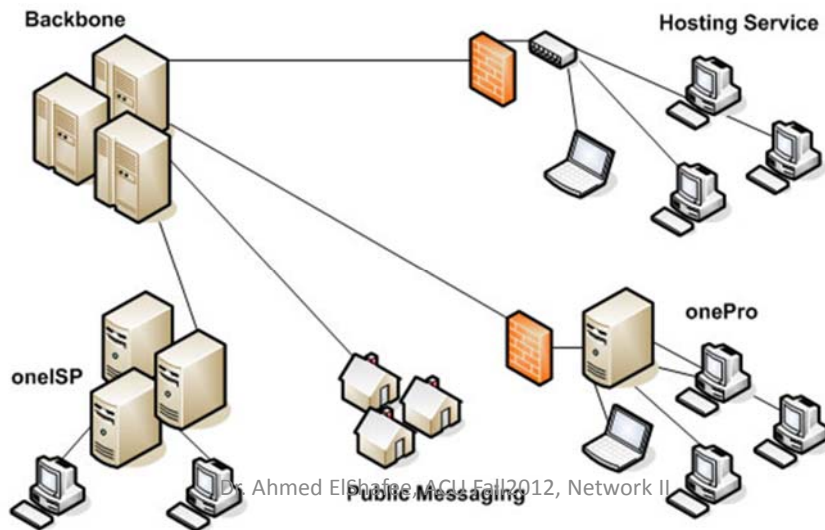


Dr. Ahmed ElShafee, ACU Fall2012, Network II

# Perspectives on Networking (3)

---

The Internet itself is really a collection of ISPs that, in turn, connect to each other. By having the various enterprise networks / users connect to the Internet, most computer users around the world can use applications to communicate with each other—worldwide.



# Perspectives on Networking (4)

---

## ***Network engineer Perspective on Networks***

A much larger number of people work on enterprise networks than ISP networks.

So we will focus on enterprises network architecture.

# Perspectives on Networking

## *Network engineer Perspective on Networks*

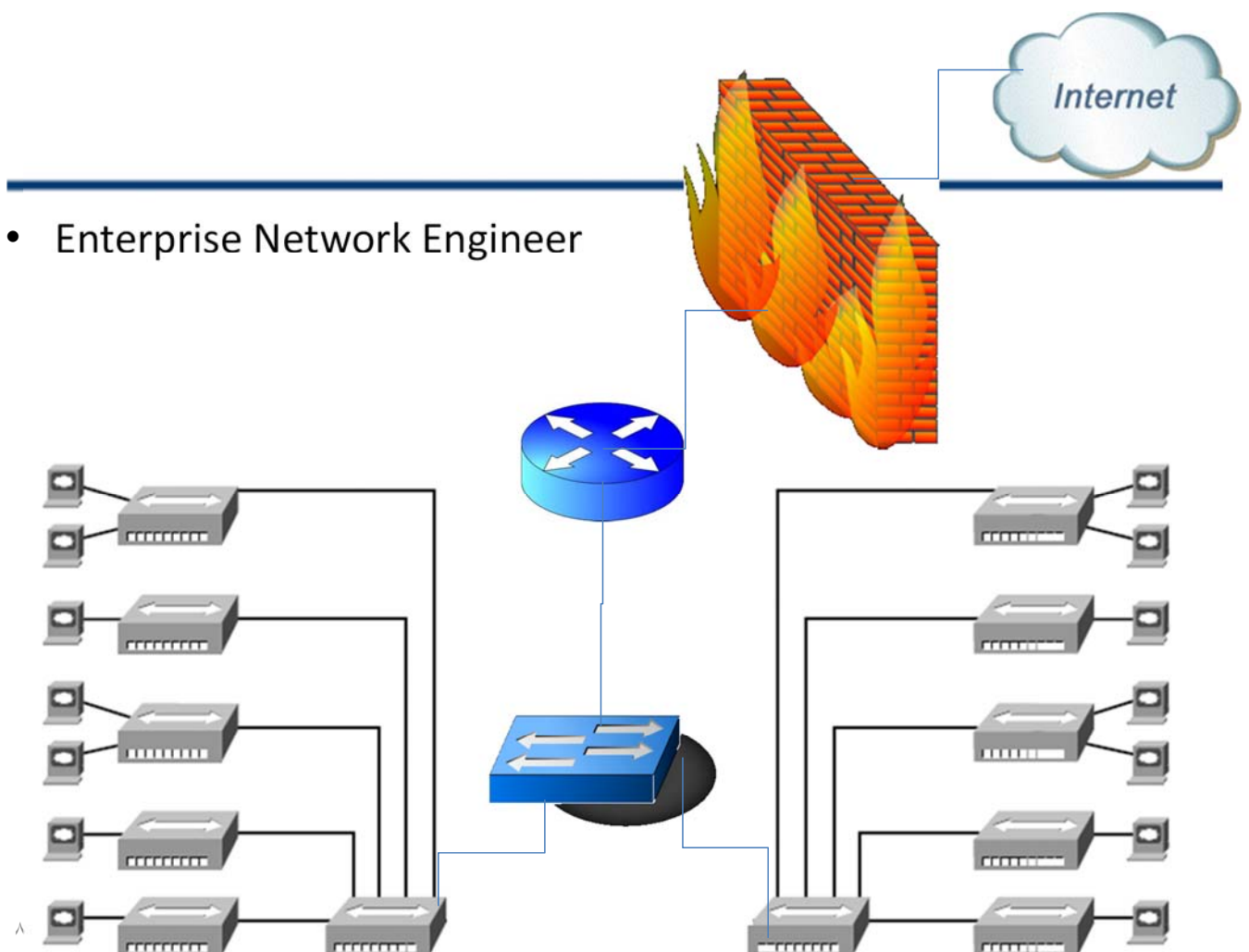
1.

A network engineer, who works for an enterprise, is responsible of the following:

- operating and maintaining enterprise network (servers and workstations) and its internet connectivity in appropriate way and with acceptable quality.
- Network operation, includes providing support of applications (DBs, web applications, mail exchanges) and OS (windows server, workstations ) that run on enterprise servers and workstations.

v

Dr. Ahmed ElShafee, ACU Fall2010, Network II



# Perspectives on Networking (5)

## 2.

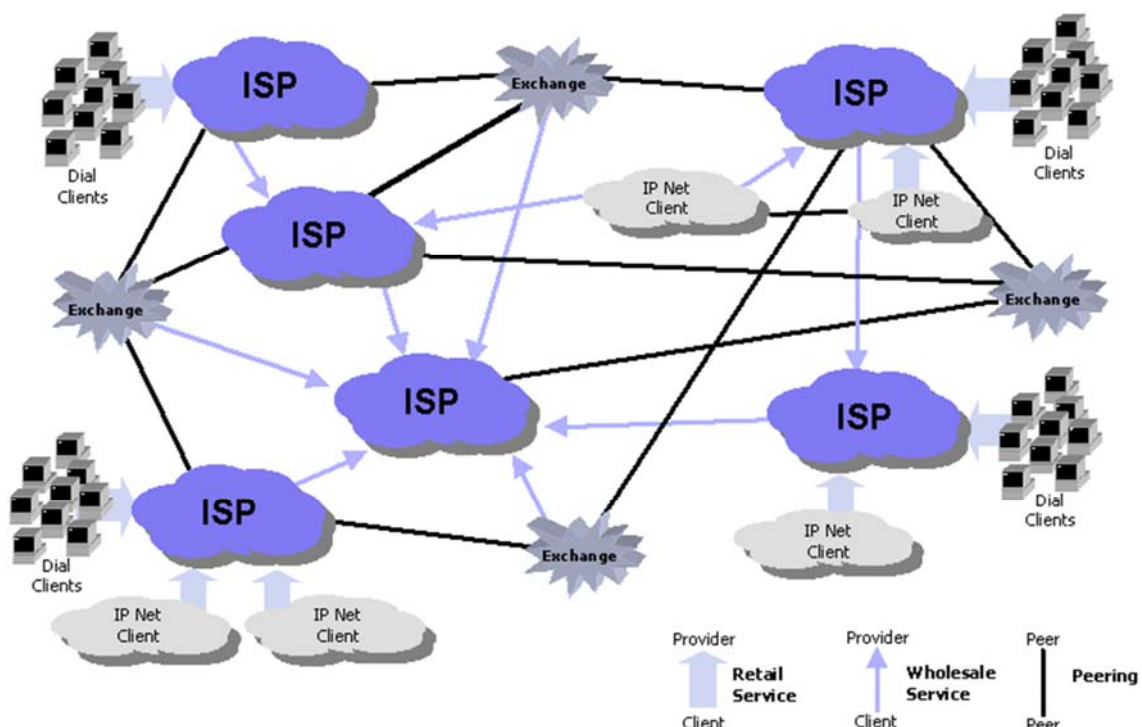
A network engineer, who works for network service providers, is responsible of one of the following

- Establishing, configuring and high level maintenance of clients network (enterprises or individuals users).
- Providing connectivity between enterprises premises (leased lines or VPNs), or connectivity of enterprises to internet (ISP).

9

Dr. Ahmed ElShafee, ACU Fall2010, Network II

- ISP network engineer



10

# Eight simple steps to develop a computer network

---

## ***Mission statement***

1. Everyone to be able to exchange files without having to get up from their desks.
2. Everybody is able to simply type in the name of a file and the name of the person, the file appears on the his computer.
3. workers to be able to take their PCs with them and just have to plug the computer into a wall socket so that they can send and receive files from the new office they moved to.
4. This network thing to be like the electrical power thing a plug in the wall near every desk, and if you plug in, you're on the network!

۱۱

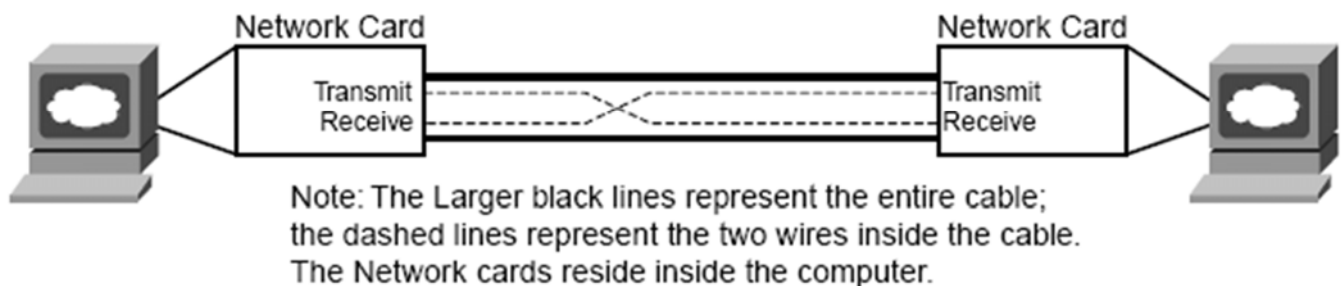
Dr. Ahmed ElShafee, ACU Fall2012, Network II

# Eight simple steps to develop a computer network (2)

---

## 1<sup>st</sup> Step: Connecting 2 PCS

### *Two PCs Transfer Files in the Lab*



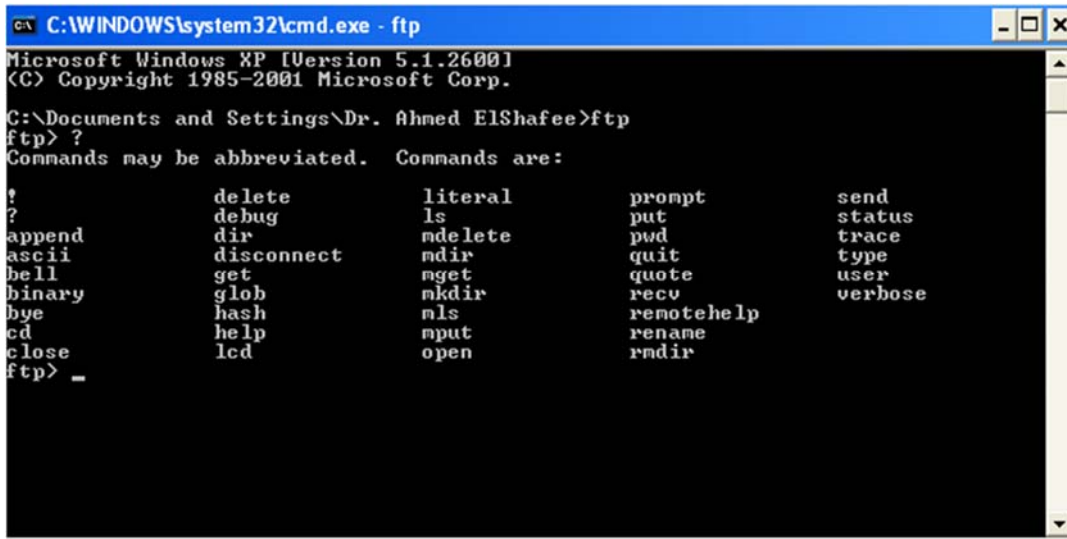
۱۲

Dr. Ahmed ElShafee, ACU Fall2012, Network II

# Eight simple steps to develop a computer network (3)

2<sup>nd</sup> step, write a software program "GetFile"

GetFile <Owner name> <filename>



```
C:\WINDOWS\system32\cmd.exe - ftp
Microsoft Windows XP [Version 5.1.2600]
(C) Copyright 1985-2001 Microsoft Corp.

C:\Documents and Settings\Dr. Ahmed ElShafee>ftp
ftp> ?
Commands may be abbreviated.  Commands are:

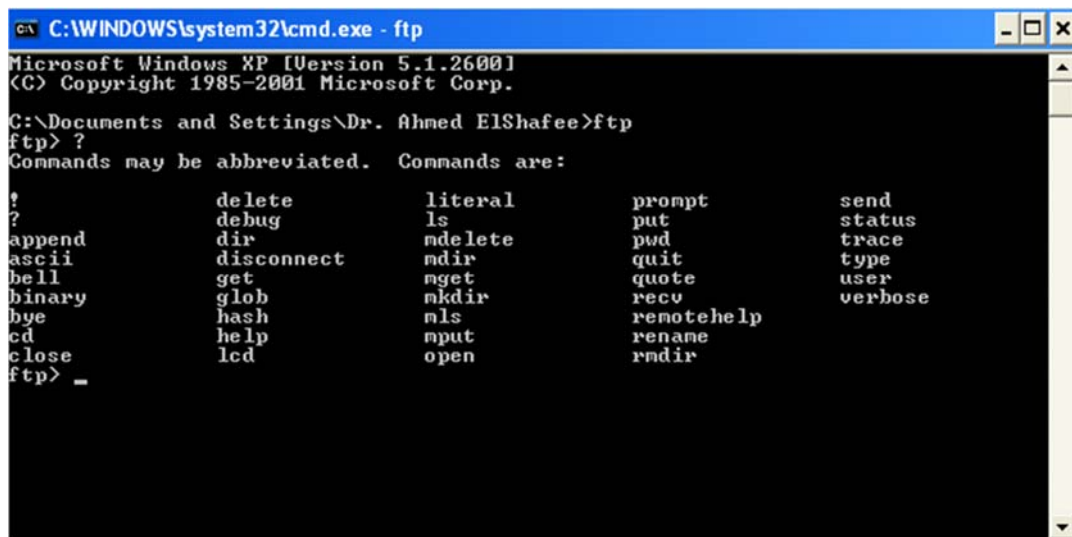
?                delete          literal         prompt         send
?                debug          ls             put           status
append          dir            mdelete       pwd           trace
ascii          disconnect     mdir          quit          type
bell           get            nget          quote         user
binary         glob          mkdir         recu         verbose
bye            hash          mls           remotehelp
cd             help          mput         rename
close          lcd           open          rmdir
ftp> _
```

# Eight simple steps to develop a computer network (3.2)

2<sup>nd</sup> step, write a software program "ExplorFiles"

ExplorFiles <Remote PC name>

You will get a list of all available files in remote PC



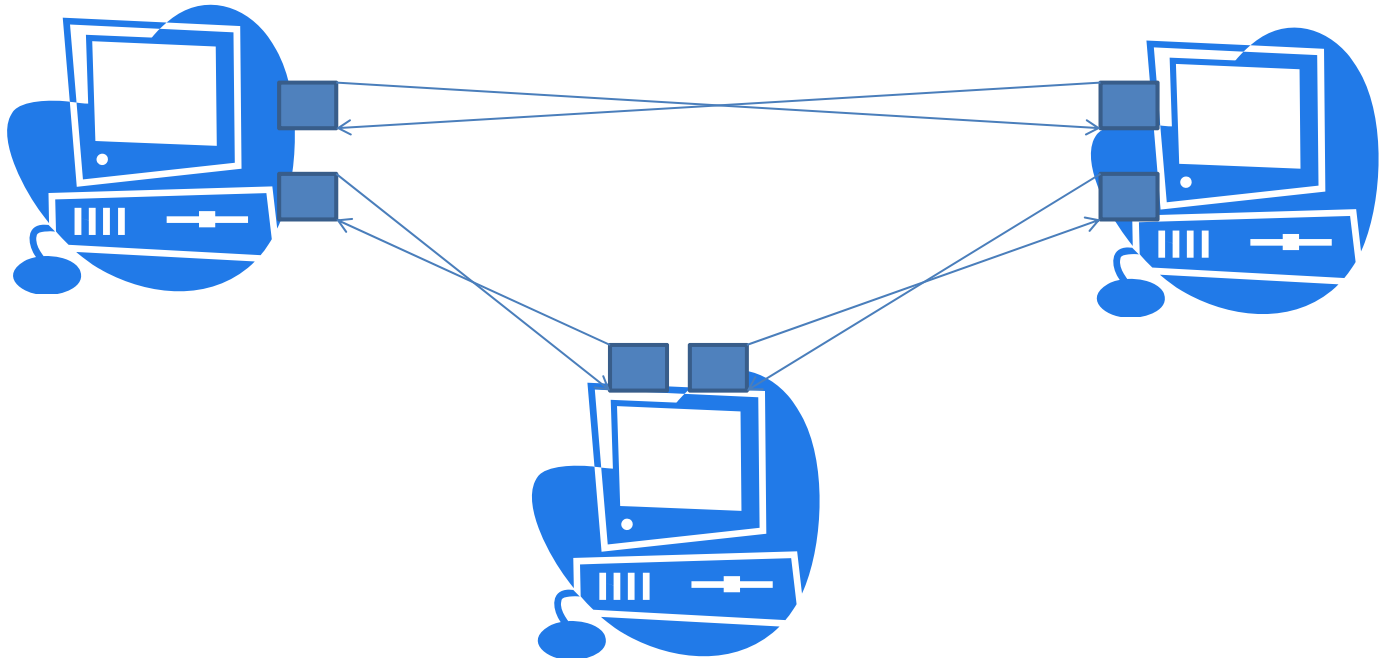
```
C:\WINDOWS\system32\cmd.exe - ftp
Microsoft Windows XP [Version 5.1.2600]
(C) Copyright 1985-2001 Microsoft Corp.

C:\Documents and Settings\Dr. Ahmed ElShafee>ftp
ftp> ?
Commands may be abbreviated.  Commands are:

?                delete          literal         prompt         send
?                debug          ls             put           status
append          dir            mdelete       pwd           trace
ascii          disconnect     mdir          quit          type
bell           get            nget          quote         user
binary         glob          mkdir         recu         verbose
bye            hash          mls           remotehelp
cd             help          mput         rename
close          lcd           open          rmdir
ftp> _
```

# Eight simple steps to develop a computer network (4)

3<sup>rd</sup> step: connecting 3 PCs

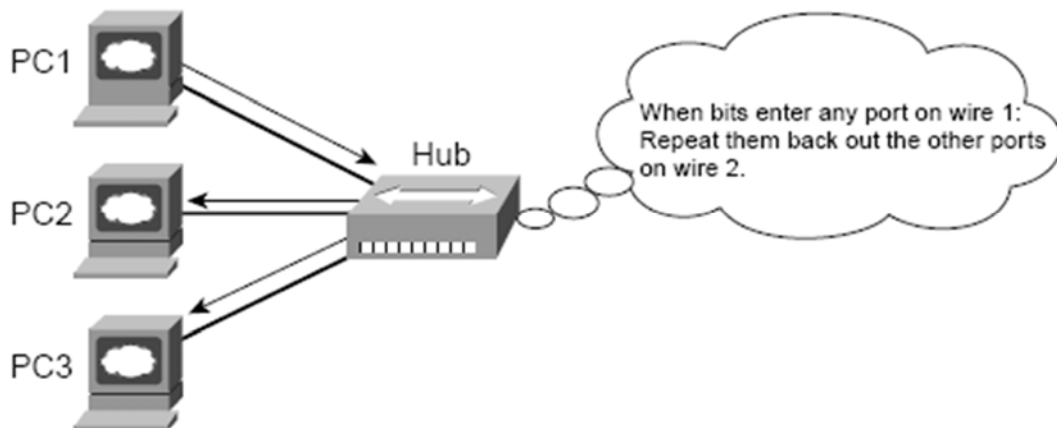


10

Dr. Ahmed ElShafee, ACU Fall2012, Network II

# Eight simple steps to develop a computer network (5)

4<sup>th</sup> step: connecting 3 PCs again



11

Dr. Ahmed ElShafee, ACU Fall2012, Network II



# Eight simple steps to develop a computer network(6)

---

5<sup>th</sup> step: security; software concerns regarding sharing and security

>>ExplorFiles <<Owner name/address> >

>>GetFile <<Owner name/address>> <file name>



١٧

Dr. Ahmed ElShafee, ACU Fall2012, Network II

# Eight simple steps to develop a computer network (7)

---

6<sup>th</sup> step: security a hardware consern; unique network ID, translate each ID into pc I



\* If you changed network card, or pc at all, just update network with your new network ID, and users will reach you by name

١٨

Dr. Ahmed ElShafee, ACU Fall2012, Network II

# Eight simple steps to develop a computer network (8)

---

7<sup>th</sup> step: establishing enterprise network

- Cable cost concern
- Cable length and signal strength concern



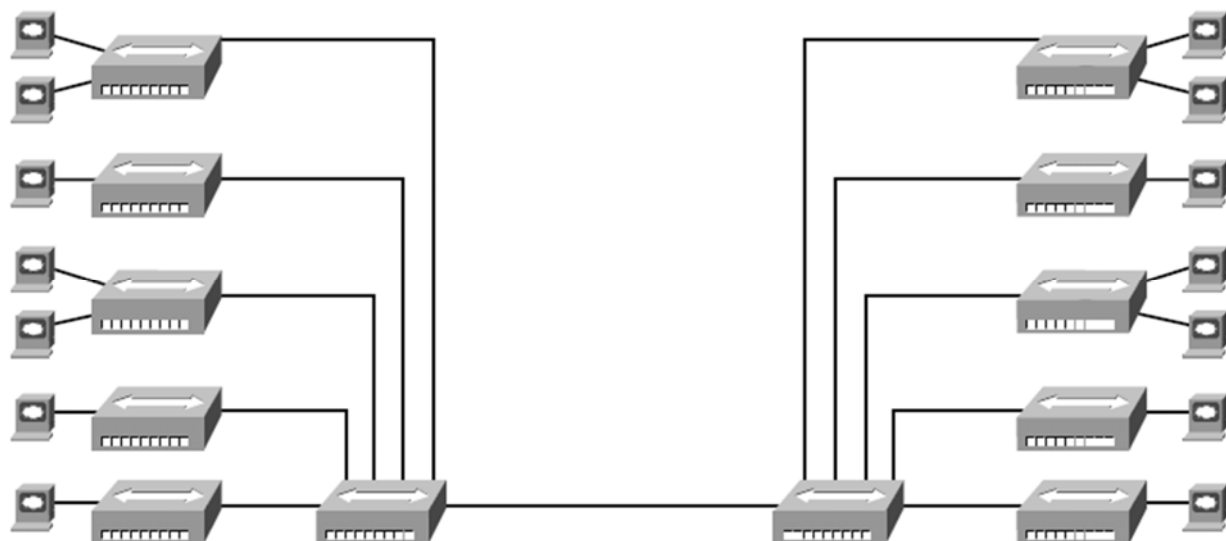
١٩

Dr. Ahmed ElShafee, ACU Fall2012, Network II

# Eight simple steps to develop a computer network(9)

---

8<sup>th</sup> step: re-establishing Enterprise network



٢٠

Dr. Ahmed ElShafee, ACU Fall2012, Network II

# What about the real network?

---

- Ethernet networks use cards inside each computer.
- The cards have unique addresses, similar to our networking cards.
- Ethernet cables connect PCs to Ethernet hubs—hubs that repeat each received signal out all other ports.
- The cabling is typically run in a star configuration—in other words, all cables run from a cubicle to a wiring closet.

---

Thanks,..  
See you next week (ISA),...