

Network II Lab 04

Single router based Network

Objective

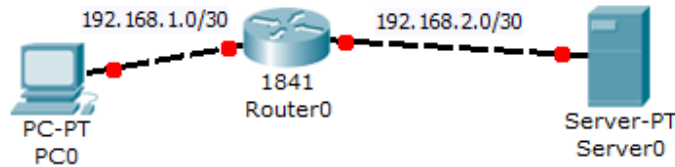
- Getting familiar with CISCO routers configuration
- Build simple Pc network contains 2 PCs and a single router.

Commands

Enable	Enable device
Config terminal	Start configuration session
Interface	Configuring interface
IP address	Assign address to a port
No shutdown	Activate port
IP route	Static route
^Z	End configuration session

Steps

1. build a network as follows



2. Configure PC0 as follows

Item	Configuration
IP	192.168.1.2
Subnet Mask	255.255.255.252
Gateway	192.168.1.1
DNS	192.168.2.2

3. Configure Server0 as follows

Item	Configuration
IP	192.168.2.2
Subnet Mask	255.255.255.252
Gateway	192.168.2.1
DNS	Name: MyServer Type: A Record Details: 192.168.2.2
HTTP	on



4. Router 0

```
Enable
Config t
Interface fa0/0
IP address 192.168.1.1 255.255.255.252
No sh
^Z

Interface fa0/1
IP address 192.168.2.1 255.255.255.252
No sh
^Z

Config t
IP route 192.168.1.0 255.255.255.252 fa0/0
IP route 192.168.2.0 255.255.255.252 fa0/1
^Z

copy running-config startup-config
```

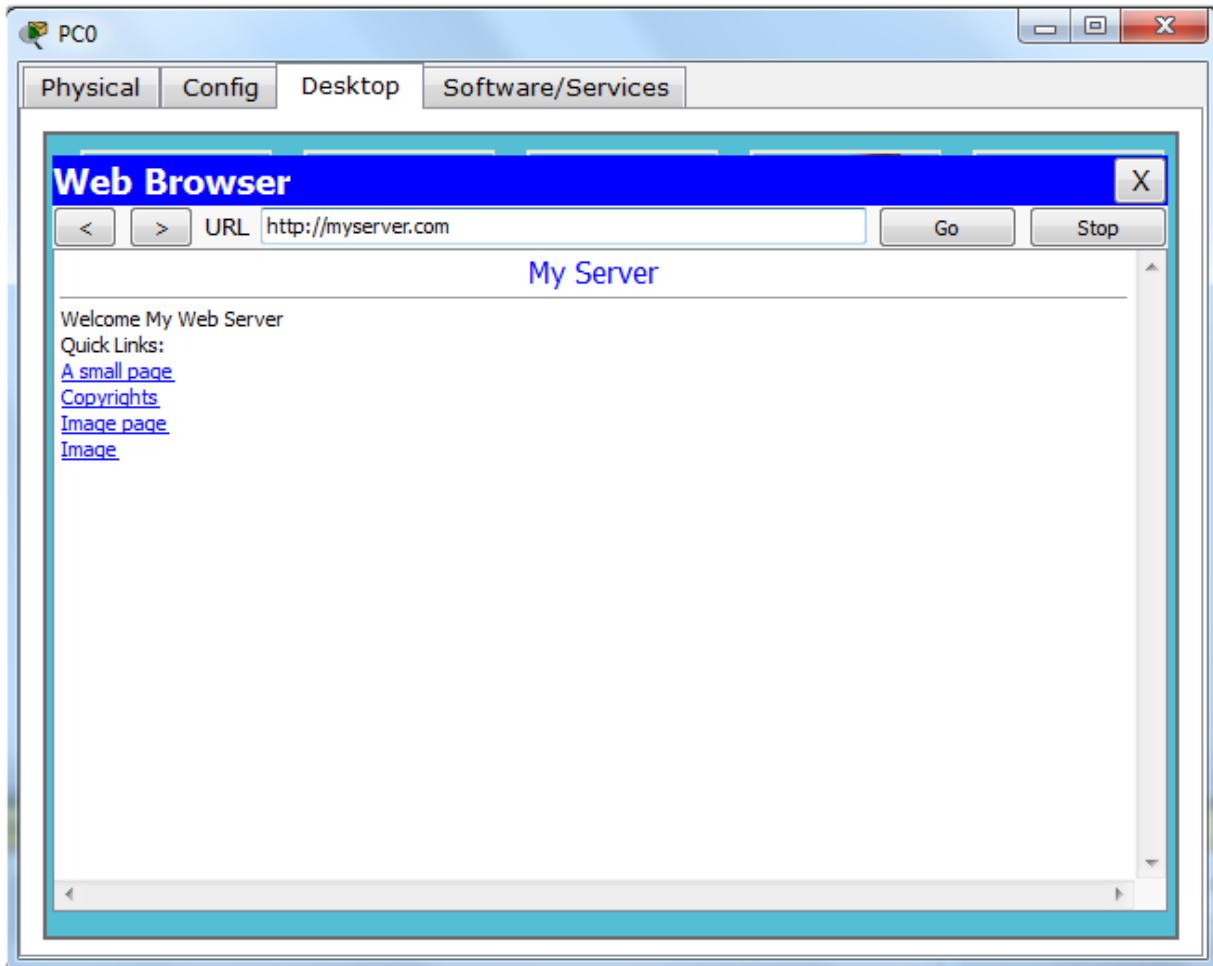
5. Test connectivity from PC

```
Ping 192.168.1.1
Ping 192.168.2.1
Ping 192.168.2.2
```

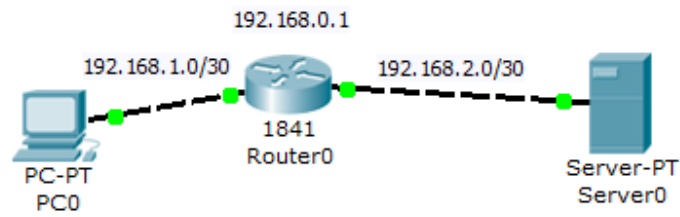
6. Test connectivity from Server

```
Ping 192.168.2.1
Ping 192.168.1.1
Ping 192.168.1.2
```

7. Test web browser from pc0



8. Assign IP for router



```
Config t
interface loopback 0
no sh
ip address 192.168.0.1 255.255.255.255
^Z
```

9. Test connection to the router

```
PC0> ping 192.168.0.1
```

```
Server0>ping 192.168.0.1
```